

Aberystwyth University

Critically endangered franciscana dolphins in an estuarine area

Paitach, Renan L. ; Bortolotto, Guilherme Augusto; Amundin, Mats; Cremer, Marta J.

Published in:

Marine Ecology Progress Series

DOI:

[10.3354/meps14249](https://doi.org/10.3354/meps14249)

Publication date:

2023

Citation for published version (APA):

Paitach, R. L., Bortolotto, G. A., Amundin, M., & Cremer, M. J. (2023). Critically endangered franciscana dolphins in an estuarine area: Fine-scale habitat use and distribution from acoustic monitoring in Babitonga Bay, southern Brazil. *Marine Ecology Progress Series*, 707, 131-150. <https://doi.org/10.3354/meps14249>

Document License

CC BY

General rights

Copyright and moral rights for the publications made accessible in the Aberystwyth Research Portal (the Institutional Repository) are retained by the authors and/or other copyright owners and it is a condition of accessing publications that users recognise and abide by the legal requirements associated with these rights.

- Users may download and print one copy of any publication from the Aberystwyth Research Portal for the purpose of private study or research.
- You may not further distribute the material or use it for any profit-making activity or commercial gain
- You may freely distribute the URL identifying the publication in the Aberystwyth Research Portal

Take down policy

If you believe that this document breaches copyright please contact us providing details, and we will remove access to the work immediately and investigate your claim.

tel: +44 1970 62 2400
email: is@aber.ac.uk

Supplement 1

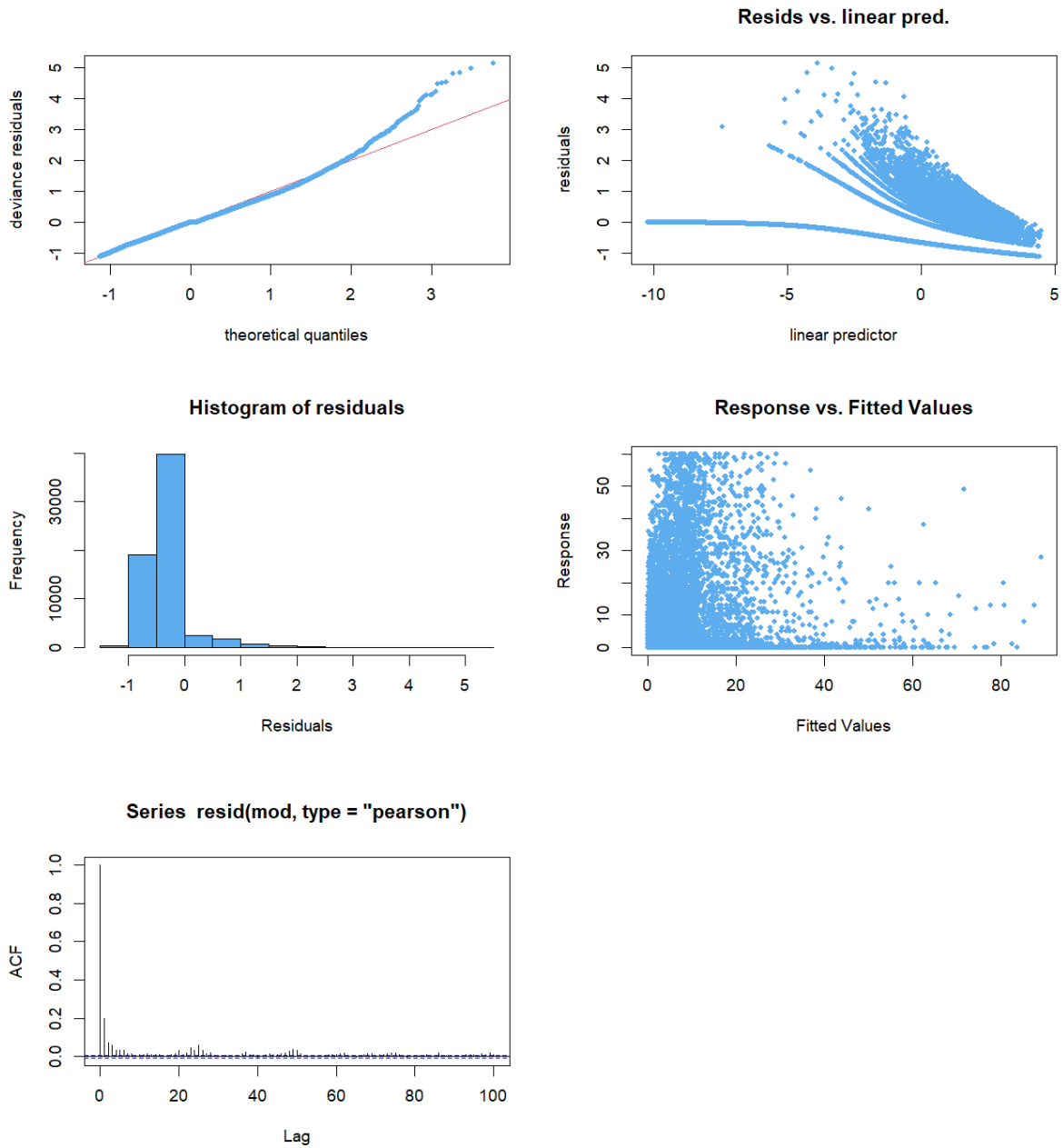


Figure S1. Diagnostic plots for the final model of habitat use of franciscana dolphins in Babitonga Bay.

Table S2. Coefficients for smooth terms for the interaction between eastings (x), northings (y) and 24 levels of hour of day as a factor in the final model of habitat use of franciscana dolphins in Babitonga Bay. edf = effective degrees of freedom, significance level at 0.05 highlighted in bold.

Smooth terms	edf	p-value (<i>F</i> -statistic)
<i>s</i> (y, x) – Hour of day 1	15.399	0.002
<i>s</i> (y, x) – Hour of day 2	14.826	0.015
<i>s</i> (y, x) – Hour of day 3	9.548	0.035
<i>s</i> (y, x) – Hour of day 4	18.351	0.002
<i>s</i> (y, x) – Hour of day 5	8.325	0.053
<i>s</i> (y, x) – Hour of day 6	14.545	<0.001
<i>s</i> (y, x) – Hour of day 7	13.102	0.008
<i>s</i> (y, x) – Hour of day 8	2.000	0.060
<i>s</i> (y, x) – Hour of day 9	2.001	0.085
<i>s</i> (y, x) – Hour of day 10	2.001	0.011
<i>s</i> (y, x) – Hour of day 11	17.015	<0.001
<i>s</i> (y, x) – Hour of day 12	2.000	0.010
<i>s</i> (y, x) – Hour of day 13	2.000	0.065
<i>s</i> (y, x) – Hour of day 14	16.314	0.003
<i>s</i> (y, x) – Hour of day 15	2.002	0.068
<i>s</i> (y, x) – Hour of day 16	17.340	<0.001
<i>s</i> (y, x) – Hour of day 17	2.002	0.050
<i>s</i> (y, x) – Hour of day 18	2.001	0.107
<i>s</i> (y, x) – Hour of day 19	16.523	0.002
<i>s</i> (y, x) – Hour of day 20	12.259	0.006
<i>s</i> (y, x) – Hour of day 21	10.998	0.003
<i>s</i> (y, x) – Hour of day 22	9.488	0.073
<i>s</i> (y, x) – Hour of day 23	11.014	0.003
<i>s</i> (y, x) – Hour of day 24	11.824	<0.001