

Aberystwyth University

Individual and population-level responses to ocean acidification

Harvey, Benjamin; Mckeown, Niall J.; Rastrick, Samuel P. S.; Bertolini, Camilla; Foggo, Andy; Graham, Helen; Hall-Spencer, Jason M.; Milazzo, Marco; Shaw, Paul W.; Small, Daniel P.; Moore, Pippa J.

Published in:
Scientific Reports

DOI:
[10.1038/srep20194](https://doi.org/10.1038/srep20194)

Publication date:
2016

Citation for published version (APA):

Harvey, B., Mckeown, N. J., Rastrick, S. P. S., Bertolini, C., Foggo, A., Graham, H., Hall-Spencer, J. M., Milazzo, M., Shaw, P. W., Small, D. P., & Moore, P. J. (2016). Individual and population-level responses to ocean acidification. *Scientific Reports*, 6, Article 20194. <https://doi.org/10.1038/srep20194>

Document License CC BY

General rights

Copyright and moral rights for the publications made accessible in the Aberystwyth Research Portal (the Institutional Repository) are retained by the authors and/or other copyright owners and it is a condition of accessing publications that users recognise and abide by the legal requirements associated with these rights.

- Users may download and print one copy of any publication from the Aberystwyth Research Portal for the purpose of private study or research.
- You may not further distribute the material or use it for any profit-making activity or commercial gain
- You may freely distribute the URL identifying the publication in the Aberystwyth Research Portal

Take down policy

If you believe that this document breaches copyright please contact us providing details, and we will remove access to the work immediately and investigate your claim.

tel: +44 1970 62 2400
email: is@aber.ac.uk

SCIENTIFIC REPORTS



OPEN

Individual and population-level responses to ocean acidification

Ben P. Harvey¹, Niall J. McKeown^{1,*}, Samuel P. S. Rastrick^{2,3,*}, Camilla Bertolini⁴, Andy Foggo⁵, Helen Graham^{6,7}, Jason M. Hall-Spencer⁵, Marco Milazzo⁸, Paul W. Shaw¹, Daniel P. Small⁹ & Pippa J. Moore^{1,10}

Received: 20 August 2015

Accepted: 23 December 2015

Published: 29 January 2016

Ocean acidification is predicted to have detrimental effects on many marine organisms and ecological processes. Despite growing evidence for direct impacts on specific species, few studies have simultaneously considered the effects of ocean acidification on individuals (e.g. consequences for energy budgets and resource partitioning) and population level demographic processes. Here we show that ocean acidification increases energetic demands on gastropods resulting in altered energy allocation, i.e. reduced shell size but increased body mass. When scaled up to the population level, long-term exposure to ocean acidification altered population demography, with evidence of a reduction in the proportion of females in the population and genetic signatures of increased variance in reproductive success among individuals. Such increased variance enhances levels of short-term genetic drift which is predicted to inhibit adaptation. Our study indicates that even against a background of high gene flow, ocean acidification is driving individual- and population-level changes that will impact eco-evolutionary trajectories.

Ocean acidification represents a deleterious anthropogenic influence that can affect the vital functions of marine organisms¹, with many studies reporting implications for growth, development and reproduction due to energetic trade-offs in important energy-demanding processes^{2–4}. If organisms cannot maintain their energy budgets then their reproductive contribution to subsequent generations may be compromised, with implications for species' abundances and distributions⁵. Predicting the fate of marine biodiversity in the face of climate change, including ocean acidification, will therefore require scaling up from impacts upon individuals' physiology and fitness to population level demographic processes.

We investigated the effects of ocean acidification on the gastropod *Hexaplex trunculus* (L.), a widespread Mediterranean mollusc. Our study made use of CO₂ seeps off the coast of Isola Vulcano (Sicily, Italy), which provide a natural gradient of pH and a carbonate chemistry analogue for future oceans⁶, as well as the means to investigate naturally-assembled communities. As a slow-moving and predominantly direct developing organism *H. trunculus* has low dispersal capacity (relative to the spatial scale of the seep system), resulting in the potential for population genetic structuring at a fine geographical scale. This makes it an ideal model with which to investigate individual- to population-level responses to prolonged (multigenerational), exposure to elevated pCO₂.

Three sites along the natural pH gradient were used (Fig. 1; full carbonate chemistry details are presented in Supplementary Table 1). All three sites experience stable ambient temperature and salinity, with the mean surface seawater pH progressively decreasing with proximity to the CO₂ seeps⁷. The Low pH site experienced elevated pCO₂ conditions (7.65 ± 0.01 pH_T), the Control site experienced ambient pH conditions (8.00 ± 0.01 pH_T) over the long-term, albeit with periods of short-term (hours/days) pH variability (likely associated with wind-driven

¹Institute of Biological, Environmental, and Rural Sciences, Aberystwyth University, Aberystwyth, SY23 3DA, UK.

²Institute of Marine Research, P.O. Box 1870, Nordnes, 5817 Bergen, Norway. ³Ocean and Earth Science, National Oceanography Centre Southampton, University of Southampton, Waterfront Campus, European Way, Southampton SO14 3ZH, UK. ⁴School of Biological Sciences, Queen's University Belfast, Belfast, BT9 7BL, Northern Ireland, UK.

⁵Marine Biology and Ecology Research Centre, School of Marine Science & Engineering, University of Plymouth, Drake Circus, Plymouth PL4 8AA, UK. ⁶Uni Research Environment, P.O. Box 7810, 5020 Bergen, Norway. ⁷School of Marine Science and Technology, Ridley Building, Newcastle University, Newcastle upon Tyne, NE1 7RU, UK.

⁸Dipartimento di Scienze della Terra e del Mare, CoNISMa, University of Palermo, via Archirafi 28, 90123 Palermo, Italy. ⁹Biology Department, St. Francis Xavier University, Antigonish, NS, B2G 2W5, Canada. ¹⁰Centre for Marine Ecosystems Research, Edith Cowan University, Perth, Australia, 6027. *These authors contributed equally to this work. Correspondence and requests for materials should be addressed to B.P.H. (email: harvey.benjaminpaul@gmail.com) or P.J.M. (email: pim2@aber.ac.uk)

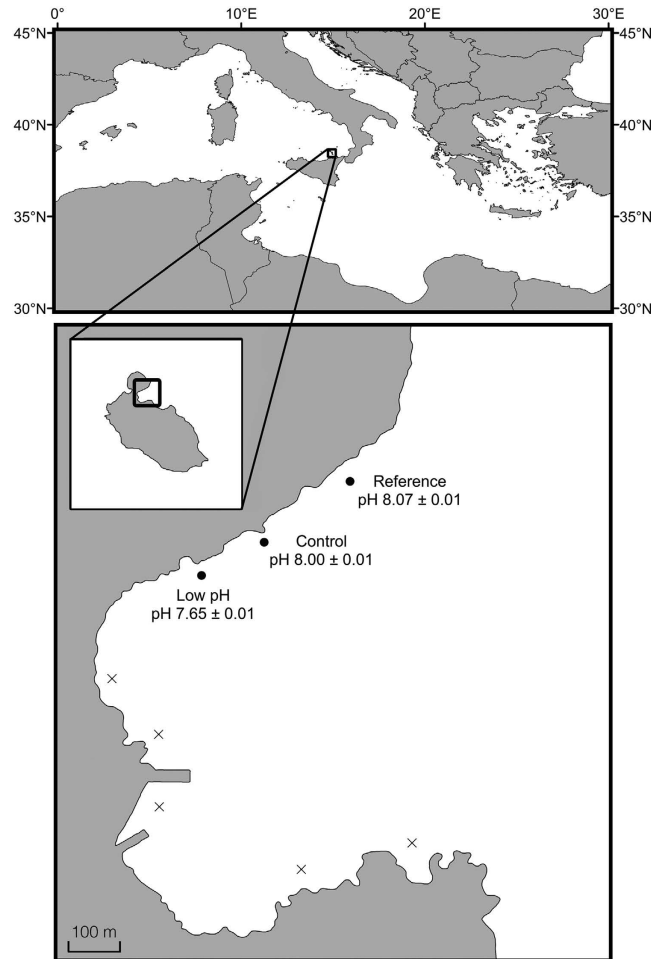


Figure 1. Map of the study area. Baia di Levante (Isola Vulcano, Sicily), showing sampling sites ‘Low pH’ (pH_T 7.65 ± 0.01), ‘Control’ (pH_T 8.00 ± 0.01) and ‘Reference’ (pH_T 8.07 ± 0.01), with ‘x’ indicating the gas seeps. The map was generated using ArcGIS 9.3 software (<http://www.esri.com/software/arcgis/>).

currents⁷) and the Reference site experienced long-term stable, ambient pH conditions (8.07 ± 0.01 pH_T), unaffected by the seeps.

Environmental factors modulate metabolic activity through alterations in resource demand and/or availability. Should insufficient resources be available, then stress-induced trade-offs between energy demanding processes can occur (e.g. growth, shell maintenance and reproduction)⁴. The capacity of an organism to maintain elevated metabolic rates (relative to their tissue mass⁴) may allow them to sustain positive life-history traits⁸, and determine organism fitness in future acidified oceans⁴.

Using reciprocal transplants of *H. trunculus* between two sites (Low pH and Control site) we tested how ocean acidification modulates metabolic activity using oxygen consumption rate ($\dot{M}O_2$) as a proxy. Results demonstrate that metabolic rate was significantly increased by exposure to elevated $p\text{CO}_2$ (ANOVA, $F_{1,20} = 4.87$, $p = 0.039$). The mean $\dot{M}O_2$ of individuals collected and caged at the Low pH site was significantly higher compared to individuals collected from, and caged in control conditions (Fig. 2). This suggests that individuals of *H. trunculus* experience increased energetic demand under persistent exposure to ocean acidification, in part this is likely due to higher predicted costs of maintaining calcification and acid–base homeostasis⁹. Both nuclear and mtDNA genetic markers showed no evidence of restricted gene flow between populations at these two sites (see Supplementary Table 2 and 3) suggesting that differences in metabolic rate were a result of acclimatisation rather than being driven by genetic differences attributable to drift or population isolation. When *H. trunculus* individuals were reciprocally transplanted between Control and Low pH sites, metabolic rates did not significantly differ (Tukey HSD *post-hoc*, $p > 0.05$), with mean $\dot{M}O_2$ intermediate between the other two treatments (Fig. 2). These results suggest that individuals entering or leaving acidified areas may acclimate via physiological plasticity⁸ (Fig. 2).

Acclimatisation can buffer populations against the immediate impacts of ocean acidification, and even provide time for adaptation¹⁰. However, it can also result in stress-induced energetic trade-offs. Mean shell length (ANOVA, $F_{2,208} = 3.33$, $p = 0.034$) and thickness (ANOVA, $F_{2,66} = 4.36$, $p = 0.017$) in the acidified conditions were significantly lower (Fig. 3), but by contrast the mean (shell-free) body mass of individuals was significantly greater in the Low pH site (ANOVA, $F_{2,66} = 22.37$, $p < 0.001$; Fig. 4). Regulation of pH at the site of calcification

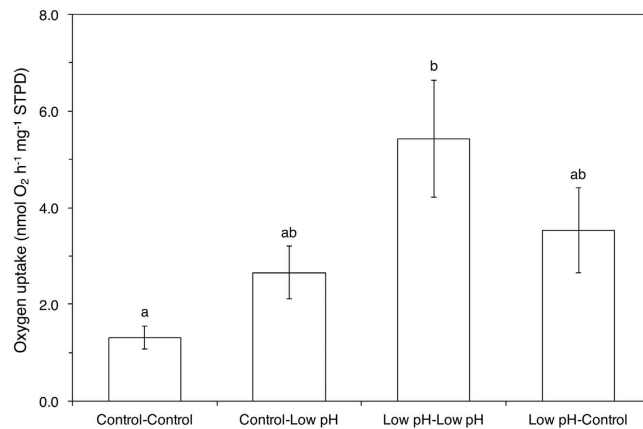


Figure 2. Effect of exposure to different $p\text{CO}_2/\text{pH}$ conditions on the mean (\pm S.E.) oxygen consumption rate of *H. trunculus* that were either (i) collected in the Control site and re-transplanted in the Control site (Control-Control), (ii) transplanted from the Control site to the Low pH site (Control-Low pH), (iii) re-transplanted within Low pH site (Low pH-Low pH) and (iv) transplanted from Low pH into the Control Site (Low pH-Control). Mean $\dot{M}\text{O}_2$ is expressed as $\text{nmol O}_2 \text{ h}^{-1} \text{ mg}^{-1}$ (WW) STPD. Significantly different treatments are indicated by different lower case letters above the column (Tukey HSD, $p \leq 0.05$).

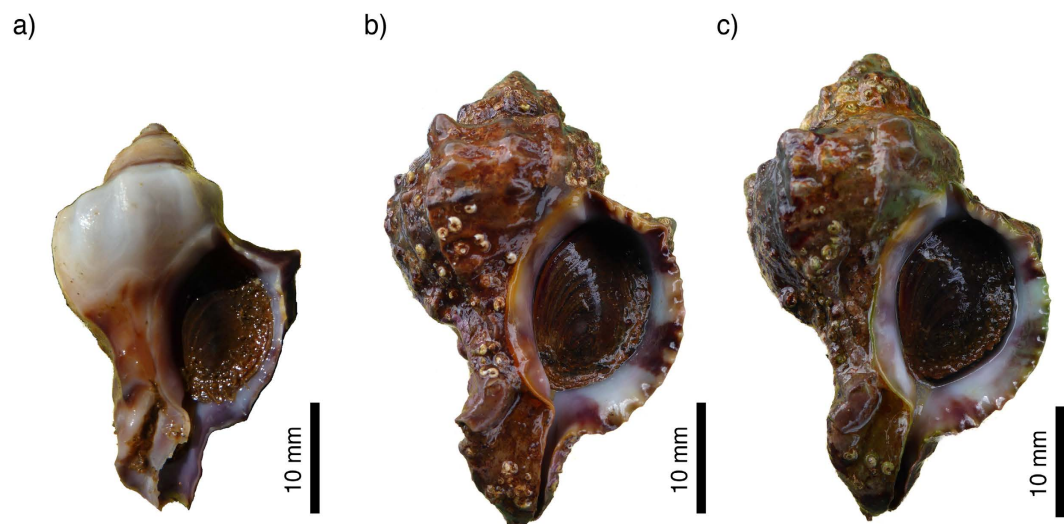


Figure 3. Shells of the investigated species. Samples of *H. trunculus* living at the Low pH site (a) showing shell dissolution and reduced shell size when compared to individuals from the Control (b), and Reference site (c). The individuals displayed are representative for both the mean shell length, as well as the overall shell condition and shape based on geometric morphometric analyses (Harvey, unpublished data).

is energetically costly¹¹, and associated increases in energy partitioning towards maintaining acid–base homeostasis may reduce net calcification rates⁹. Reduced shell thickness may also lessen any growth-limiting effect that the shell structure has on somatic tissue growth¹¹, allowing for a larger body mass (assuming sufficient energy is available).

When scaling from the individual to the population there is a need to consider whether responses are sex-specific, since any disproportionate effects on one or the other sex could subsequently affect population demographics. To our knowledge, no previous studies have provided evidence for skewed sex ratios associated with ocean acidification. However, it has been previously demonstrated that sex-specific effects can alter how an individual responds to, or is affected by ocean acidification. For instance, the metabolome of males and females of the blue mussel *Mytilus edulis* differed significantly when exposed to reduced pH¹². Moreover, it has been suggested that selection pressures to ocean acidification may differ between sexes¹³. We found that significantly fewer females were present in the Low pH site (32.26%, $\chi^2_{1,31} = 3.90$, $p = 0.048$), while the sex ratio in the ambient pH sites did not significantly differ from equality (Control, 54.84% female; Reference, 45.83% female, χ^2 both $p > 0.50$). It should be noted that there are increased levels of trace elements and heavy metals at our low pH site (due to the use of the CO_2 seep site¹⁴). While a previous study, at the same study sites and using the same species as the present work, found no spatial pattern in trace element bioaccumulation¹⁵ it is not possible to disentangle

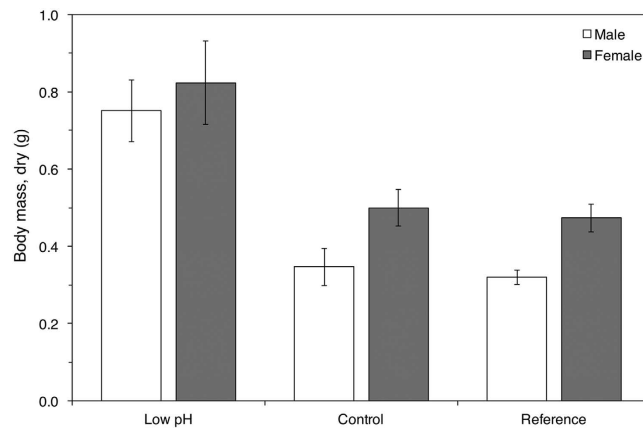


Figure 4. Effect of exposure to different $p\text{CO}_2/\text{pH}$ conditions on the mean (\pm S.E.) dry shell-free body mass of male (open bars) and female (grey bars) individuals (length 44 ± 1.2 mm [S.E.]) from the Low pH, Control and Reference site.

the effects of reduced pH from potential changes in sex ratios that can occur through the bioaccumulation of heavy metals and trace elements^{16,17}. Therefore, while our findings imply that sex-specific responses to ocean acidification may occur with consequences for individual performance and fitness, as well as for population dynamics, some caution in their interpretation is advised.

Despite the absence of genetic differentiation between the sites, the prominent feature of the genetic data was the large, significant F_{IS} values reported for the Low pH site compared to non-significant values reported for both ambient pH sites (Low pH multi-locus $F_{IS} = 0.2036$, $p < 0.0001$; Control multi-locus $F_{IS} = -0.0368$, $p = 0.2692$; Reference multi-locus $F_{IS} = -0.0379$, $p = 0.9879$). The F_{IS} values suggest that for *H. trunculus* some aspect of the acidified environment results in greater departures from Hardy-Weinberg equilibrium outcrossing genotype proportions in the form of heterozygote deficits. Such site-specific heterozygote deficits could be generated by inbreeding, natural selection acting on the genetic markers, or spatial/temporal structure within samples known as the Wahlund effect¹⁸. As the significant multi-locus F_{IS} values resulted from significant values at the majority of individual loci, locus-specific selection effects are unlikely. Inbreeding effects within a small population can also be discounted, as the Low pH site sample reported significantly reduced mean individual relatedness (mr) values compared to the Control ($p = 0.03$) and Reference ($p = 0.048$) sites (Low pH $mr = -0.514$; Control $mr = 0.0077$; Reference $mr = 0.0066$).

For a Wahlund effect to be observed, genetically distinct populations must occur within the geographical scale of the sampling. Due to the high gene flow indicated throughout the sampled area, any heterogeneity in allele frequencies is more likely to be generated by increased variance in reproductive success among individuals, rather than by spatial population structuring *per se*. Such variance in reproductive success among individuals has been reported for many highly fecund marine invertebrates and is often referred to as sweepstakes recruitment¹⁹. Within such a reproductive system many individuals do not contribute to recruitment in a given cycle, resulting in short-term genetic drift generating allele frequency differences among groups of recruits even though they are all derived from a single population. These differences among groups generate the observed heterozygote deficits and decreased mean relatedness within samples.

Variance in reproductive success among individuals may be driven by any deterministic and/or stochastic processes influencing fitness, and ocean acidification has been shown to strongly influence recruitment processes²⁰. Previous studies have demonstrated that climate derived stressors may result in a reduction in the proportion of the population that are reproductively active and an increase in reproductive failure (such as in the limpet *Patella vulgata*²¹). In our study significantly reduced numbers of females in the Low pH site represents an obvious mechanism that could increase variance in reproductive success among males, however altered energy allocations and/or other cryptic factors may also contribute.

The increased variance in reproductive success and consequent genetic drift pulses (within and between cohorts) could, in theory, hinder adaptive evolution of populations in response to ocean acidification^{22,23}. Acclimatisation can represent an important mechanism for maintaining population persistence under stressful conditions²³. However, any energetic trade-offs may result in previously unforeseen consequences, and unless adaptive evolution can 'catch up'²⁴, there could be serious implications for population dynamics. This study demonstrates that even within a high gene flow system elevated $p\text{CO}_2$ concentrations are driving individual and population level changes that will impact eco-evolutionary trajectories, and highlights the need for deeper understanding of the links between individual effects and (often unknown²⁵) population demographics in order to predict and manage the consequences of climate change.

Methods

***H. trunculus* collection.** Collection of *H. trunculus* (and subsequent experiments) were carried out at Levante Bay ($38^\circ 25' \text{ N}$, $14^\circ 57' \text{ E}$), Vulcano, Italy in May 2013 and May 2014. During the first experimental period, individuals used for the reciprocal transplant were collected and deployed in transplantation cages, with additional individuals collected in order to measure shell length. During the second sampling period individuals

were destructively sampled to determine sex, body mass (shell-free dry mass of soft tissues, including gonads) and shell thickness (outer lip). Genetic samples were collected during both experimental periods to test for temporal stability of any population structuring or demography. Samples were taken non-destructively by removing a tissue sample from the foot, then returning individuals to their respective sites.

Reciprocal transplant experiment. Using an orthogonal design, six cages per treatment ($10 \times 10 \times 10$ cm), each containing an individual *H. trunculus*, were distributed across four treatments. Individuals from the elevated $p\text{CO}_2$ areas were (i) transplanted into control conditions (Control site), or (ii) re-transplanted into the high $p\text{CO}_2$ areas (Low pH site), and individuals collected from the Control site were (iii) transplanted into high $p\text{CO}_2$ areas, or (iv) re-transplanted into the control conditions. After 14 days exposure, the cages were recovered and transported to a reservoir tank with site-specific ambient pH prior to placement into respirometers for oxygen consumption rate measurements within 30 min of collection.

Measurement of $\dot{M}\text{O}_2$. Oxygen consumption rate ($\dot{M}\text{O}_2$) was determined using stop-flow respirometers (volume 460 ml). The respirometers were immersed in a reservoir tank ($40 \times 60 \times 30$ cm) to maintain natural temperature (19.53 ± 0.06 °C), and supplied with fully-oxygenated filtered seawater from either the Control (pH 8.1 ± 0.1) or Low pH (pH 7.8 ± 0.1) site. Individuals of *H. trunculus* were placed into a respirometer, and allowed to settle to the experimental conditions for 1 h. Water samples (taken via syringe from the respirometers) were collected in order to measure the partial pressure of oxygen ($p\text{O}_2$), by passing the water sample over a $p\text{O}_2$ electrode (E101/E5046 polarographic O_2 electrode, Loligo systems, Denmark) connected to an oxygen meter (Oxygen Meter model 781, SI Strathkelvin Instruments Limited, Scotland) that was calibrated to 100% aerated site-specific seawater. The first water sample was taken following the 1 h settling period, and at the same time, the circulation of seawater from the reservoir to the respirometers was stopped. A second water sample was taken from each respirometer after 1 h (maintained above 17 kPa), and the oxygen consumption rate was determined as the change in $p\text{O}_2$ between the first and second water samples. This was multiplied by the solubility coefficient for oxygen, adjusted for salinity and temperature²⁶, and the volume of water within each respirometer. Oxygen consumption rates were corrected for standard conditions of temperature and pressure (STPD), and presented as $\text{nmol O}_2 \text{ h}^{-1} \text{ mg}^{-1}$ (wet weight) STPD.

Shell length, sex determination and body mass. Shell length was measured using a digital calliper (± 0.1 mm) measuring from the apex to the tip of the siphonal canal ($n = 73$ –85 per site). A macroscopic maturation scale was employed to determine the sex of *H. trunculus*²⁷ ($n = 24$ –31 per site). Body mass was determined by dissecting the body tissue from the shell ($n = 24$ –31 per site), and measured as dry weight (g, 60 °C, 48 hours). Shell thickness (outer lip) was measured in the growing tip along the anterior portion of the shell ($n = 18$ per site), using a dissection microscope with $10\times$ eyepiece graticule (M5A, Wild Heerbrugg, Switzerland).

Statistical analyses. Statistical analyses were performed using R. For shell lengths and thickness, differences were tested by one-way analysis of variance (ANOVA) by Site. For $\dot{M}\text{O}_2$, differences were tested by two-way ANOVA by Origin \times Exposure, and for body mass, two-way ANOVA by Site \times Sex. All significant ANOVA results were followed by Tukey's *post-hoc* tests. Deviation from equal sex ratios were determined using Pearson's chi-squared tests. All data sets were normally distributed and had equal variances.

DNA extraction and genotyping. DNA was extracted from ethanol preserved tissue samples using a standard CTAB-chloroform/isoamylalcohol method. Novel microsatellite markers specific to *H. trunculus* were developed by construction of a microsatellite-enriched genomic library following methods outlined in refs^{28,29}.

Individuals collected at two times from each of the three sites (temporal sample 1: $n = 48$ per site; temporal sample 2: $n = 28$ –30 per site) were genotyped at four microsatellite loci (GenBank KJ765703–KJ765706) by electrophoresis of PCR products on an ABI3500 automated sequencer (Applied Biosystems, Foster City, California, USA), with allele sizes determined using GENEMAPPER³⁰. Mitochondrial DNA (mtDNA) was assessed by PCR amplification and sequencing of a 602bp fragment of the cytochrome oxidase I gene, which was amplified using species-specific primers HtrucF (5'-ATATGGTCAGGGCTTGTGG-3') and HtrucR (5'-CCTGCAGGATCAAAGAACG-3') designed from GenBank sequences (EU391577). Sequencing was performed with the PCR primers using BigDye technology (Applied Biosystems). Sequences were edited, aligned and trimmed to a standard length (532bp) in BIOEDIT³¹.

Population genetics statistics. Deviations from Hardy-Weinberg equilibrium were evaluated using exact tests in GENEPOP³² and an estimator of standardised genetic variance within populations, F_{IS} ³³, calculated in FSTAT³⁴. Genetic differences among samples were quantified by F_{ST} (Φ) using FSTAT. FSTAT was used to test for significant differences (1000 permutations) in genetic variability (as described by A_r , H_s , H_b , F_{IS} , F_{ST} , relatedness, corrected relatedness) between groups.

MtDNA variation was assessed in ARLEQUIN³⁵ using indices of haplotype and nucleotide diversity (h and π , respectively) and their variances, with differentiation among samples tested by global and pairwise Φ_{ST} .

References

1. Feely, R. *et al.* Impact of anthropogenic CO_2 on the CaCO_3 system in the oceans. *Science* **305**, 362–366 (2004).
2. Harvey, B. P., Gwynn-Jones, D. & Moore, P. J. Meta-analysis reveals complex marine biological responses to the interactive effects of ocean acidification and warming. *Ecology and Evolution* **3**, 1016–1030 (2013).
3. Kroeker, K. J. *et al.* Impacts of ocean acidification on marine organisms: quantifying sensitivities and interaction with warming. *Global Change Biology* **19**, 1884–1896 (2013).
4. Garilli, V. *et al.* Physiological advantages of dwarfing in surviving extinctions in high- CO_2 oceans. *Nature Climate Change* **5**, 678–682 (2015).

5. Borregaard, M. K. & Rahbek, C. Causality of the relationship between geographic distribution and species abundance. *Quarterly Review of Biology* **85**, 3–25 (2010).
6. Hall-Spencer, J. M. *et al.* Volcanic carbon dioxide vents show ecosystem effects of ocean acidification. *Nature* **454**, 96–99 (2008).
7. Boatta, F. *et al.* Geochemical survey of Levante Bay, Vulcano Island (Italy), a natural laboratory for the study of ocean acidification. *Marine Pollution Bulletin* **73**, 485–494 (2013).
8. Calosi, P. *et al.* Adaptation and acclimatization to ocean acidification in marine ectotherms: An *in situ* transplant experiment with polychaetes at a shallow CO₂ vent system. *Philosophical Transactions of the Royal Society of London B Biological Sciences* **368**, 20120444 (2013).
9. Stumpp, M. *et al.* Acidified seawater impacts sea urchin larvae pH regulatory systems relevant for calcification. *Proceedings of the National Academy of Sciences of the United States of America* **109**, 18192–18197 (2012).
10. Chevin, L.-M., Lande, R. & Mace, G. M. Adaptation, plasticity, and extinction in a changing environment: towards a predictive theory. *PLoS Biology* **8**, e1000357 (2010).
11. Palmer, A. R. Relative cost of producing skeletal organic matrix versus calcification: Evidence from marine gastropods. *Marine Biology* **75**, 287–292 (1983).
12. Ellis, R. P. *et al.* 1H NMR metabolomics reveals contrasting response by male and female mussels exposed to reduced seawater pH, increased temperature, and a pathogen. *Environmental Science & Technology* **48**, 7044–7052 (2014).
13. Lane, A., Campanati, C., Dupont, S. & Thiyagarajan, V. Trans-generational responses to low pH depend on parental gender in a calcifying tubeworm. *Scientific Reports* **5**, 10847 (2015).
14. Vizzini, S. *et al.* Trace element bias in the use of CO₂ vents as analogues for low pH environments: Implications for contamination levels in acidified oceans. *Estuarine, Coastal and Shelf Science* **134**, 19–30 (2013).
15. McClintock, J. B. *et al.* Trace elements in shells of common gastropods in the near vicinity of a natural CO₂ vent: no evidence of pH-dependent contamination. *Biogeosciences Discussions* **11**, 5215–5237 (2014).
16. Gupta, S. K. & Singh, J. Evaluation of mollusc as sensitive indicator of heavy metal pollution in aquatic system: a review. *IIOAB Journal* **2**, 49–57 (2011).
17. Rodriguez, E. M., Medesani, D. A. & Fingerman, M. Endocrine disruption in crustaceans due to pollutants: A review. *Comparative Biochemistry and Physiology Part A: Molecular & Integrative Physiology* **146**, 661–671 (2007).
18. Wahlund, S. Zusammensetzung von populationen und korrelationserscheinungen vom standpunkt der vererbungslehre aus betrachtet. *Hereditas* **11**, 65–106 (1928).
19. Hedgecock, D. & Pudovkin, A. I. Sweepstakes reproductive success in highly fecund marine fish and shellfish: a review and commentary. *Bulletin of Marine Science* **87**, 971–1002 (2011).
20. Byrne, M. Impact of ocean warming and ocean acidification on marine invertebrate life history stages: Vulnerabilities and potential for persistence in a changing ocean. *Oceanography and Marine Biology: An Annual Review* **49**, 1–42 (2011).
21. Moore, P., Thompson, R. & Hawkins, S. Phenological changes in intertidal con-specific gastropods in response to climate warming. *Global Change Biology* **17**, 709–719 (2011).
22. Stockwell, C. A., Hendry, A. P. & Kinnison, M. T. Contemporary evolution meets conservation biology. *Trends in Ecology & Evolution* **18**, 94–101 (2003).
23. Sunday, J. M. *et al.* Evolution in an acidifying ocean. *Trends in Ecology & Evolution* **29**, 117–125 (2014).
24. Lande, R. Adaptation to an extraordinary environment by evolution of phenotypic plasticity and genetic assimilation. *Journal of Evolutionary Biology* **22**, 1435–1446 (2009).
25. Harvey, B. P. *et al.* Evolution of marine organisms under climate change at different levels of biological organisation. *Water* **6**, 3545–3574 (2014).
26. Harvey, H. W. *The Chemistry and Fertility of Seawaters*. (Cambridge University Press, 1955).
27. Elhasni, K., Ghorbel, M., Vasconcelos, P. & Jarboui, O. Reproductive cycle and size at first sexual maturity of *Hexaplex trunculus* (Gastropoda: Muricidae) in the Gulf of Gabès (southern Tunisia). *Invertebrate Reproduction and Development* **54**, 213–225 (2010).
28. Glenn, T. C. & Schable, N. A. Isolating microsatellite DNA loci. *Methods in Enzymology* **395**, 202–222 (2005).
29. McKeown, N. J. & Shaw, P. W. Polymorphic nuclear microsatellite loci for studies of brown crab, *Cancer pagurus* L. *Molecular ecology resources* **8**, 653–655 (2008).
30. Chatterji, S. & Pachter, L. Reference based annotation with GeneMapper. *Genome Biology* **7**, R29 (2006).
31. Hall, T. A. BioEdit: a user-friendly biological sequence alignment editor and analysis program for Windows 95/98/NT. *Nucleic acids symposium series* **41**, 95–98 (1999).
32. Raymond, M. & Rousset, F. GENEPOP (version 1.2): Population genetics software for exact tests and ecumenicism. *Journal of Heredity* **86**, 248–249 (1995).
33. Weir, B. S. & Cockerham, C. C. Estimating *F*-statistics for the analysis of population structure. *Evolution*, 1358–1370 (1984).
34. Goudet, J. F. S. T. A. T. (version 1.2): A computer program to calculate *F*-statistics. *Journal of Heredity* **86**, 485–486 (1995).
35. Excoffier, L., Laval, G. & Schneider, S. Arlequin (version 3.0): An integrated software package for population genetics data analysis. *Evolutionary Bioinformatics Online* **1**, 47–50 (2005).

Acknowledgements

B.H. was funded by an Institute of Biological, Environmental and Rural Sciences PhD studentship, P.M. and B.H. were funded by a Marie Curie Career Integration Grant (PCIG10-GA-2011-303685). S.R., C.B., H.G., J.H.S. and D.S. were funded by UK Ocean Acidification Research Programme (funded by NERC, Defra and DECC; Grant no. NE/H02543X/1) Added Value Award, awarded to S.R. supported by A.F., M.M. and J.H.S. Thanks also go to Prof. Martin Solan and Dr. Chris Hauton for their support. This work contributes to the EU 'Mediterranean Sea acidification under a changing climate' project (MedSea; grant agreement 265103).

Author Contributions

B.H. and P.M. designed the study, with the concept of this paper developed in discussion between B.H., N.M., S.R. and P.M. Fieldwork was performed by B.H. and P.M. with support from S.R., C.B., A.F., H.G. and D.S. Organism respirometry was carried out by S.R. with support from C.B., H.G. and D.S. Molecular work was carried out by B.H., N.M. and P.S. Seawater chemistry was analysed by S.R., J.H.S. and M.M. First draft was written by B.H., N.M., S.R. and P.M. All authors contributed to subsequent revisions.

Additional Information

Supplementary information accompanies this paper at <http://www.nature.com/srep>

Competing financial interests: The authors declare no competing financial interests.

How to cite this article: Harvey, B. P. *et al.* Individual and population-level responses to ocean acidification. *Sci. Rep.* **6**, 20194; doi: 10.1038/srep20194 (2016).



This work is licensed under a Creative Commons Attribution 4.0 International License. The images or other third party material in this article are included in the article's Creative Commons license, unless indicated otherwise in the credit line; if the material is not included under the Creative Commons license, users will need to obtain permission from the license holder to reproduce the material. To view a copy of this license, visit <http://creativecommons.org/licenses/by/4.0/>