

Aberystwyth University

Licensing MLH1 sites for crossover during meiosis

Martin, Azahara C.; Shaw, Peter; Phillips, Dylan; Reader, Steve; Moore, Graham

Published in:
Nature Communications

DOI:
[10.1038/ncomms5580](https://doi.org/10.1038/ncomms5580)

Publication date:
2014

Citation for published version (APA):
Martin, A. C., Shaw, P., Phillips, D., Reader, S., & Moore, G. (2014). Licensing MLH1 sites for crossover during meiosis. *Nature Communications*, 5, Article 4580 . <https://doi.org/10.1038/ncomms5580>

Document License CC BY

General rights

Copyright and moral rights for the publications made accessible in the Aberystwyth Research Portal (the Institutional Repository) are retained by the authors and/or other copyright owners and it is a condition of accessing publications that users recognise and abide by the legal requirements associated with these rights.

- Users may download and print one copy of any publication from the Aberystwyth Research Portal for the purpose of private study or research.
- You may not further distribute the material or use it for any profit-making activity or commercial gain
- You may freely distribute the URL identifying the publication in the Aberystwyth Research Portal

Take down policy

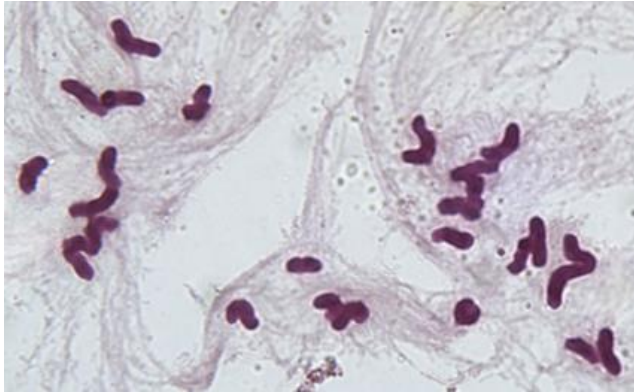
If you believe that this document breaches copyright please contact us providing details, and we will remove access to the work immediately and investigate your claim.

tel: +44 1970 62 2400
email: is@aber.ac.uk

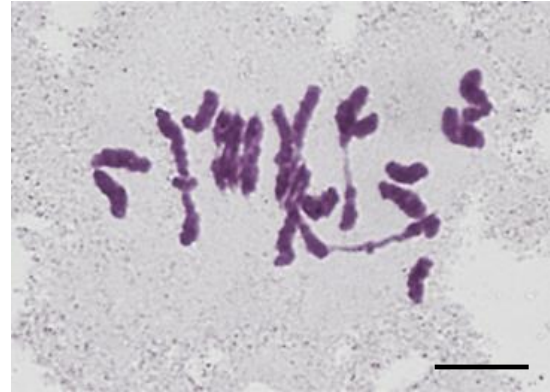
Licensing MLH1 sites for crossover during meiosis

Azahara C Martín, Peter Shaw, Dylan Phillips, Steve Reader and Graham Moore

Wheat-Rye *Ph1+*



Wheat-Rye *Ph1-*



Genotype	No. of cells	Chiasmata/Cell
Wheat-Rye <i>Ph1+</i> n = 28	500	0.58
Wheat-Rye <i>Ph1-</i> n = 28	100	7.78

Supplementary Figure 1: Meiotic associations at metaphase I in wheat-rye hybrids in the presence (*Ph1+*) and absence (*Ph1-*) of the *Ph1* locus. Bar = 10 μ m.

Supplementary Table 1: Meiotic associations at metaphase I in wheat in the presence (*Ph1+*) and absence (*Ph1-*) of the *Ph1* locus.

Genotype	Cell No.	Rod bivalents	Ring bivalents	Genotype	Cell No.	Univalents	Rod bivalents	Ring bivalents	Trivalents	Quadrivalents
Wheat <i>Ph1+</i> 2n = 42	1	1	20	Wheat <i>Ph1-</i> 2n = 42	1	0	5	16	0	0
	2	0	21		2	2	5	13	0	1
	3	0	21		3	2	5	13	0	1
	4	0	21		4	0	6	13	0	1
	5	4	17		5	2	1	19	0	0
	6	0	21		6	0	6	15	0	0
	7	2	19		7	0	5	16	0	0
	8	0	21		8	2	4	14	0	1
	9	1	20		9	0	7	14	0	0
	10	2	19		10	2	4	14	0	1
	11	1	20		11	0	5	16	0	0
	12	1	20		12	0	5	16	0	0
	13	2	19		13	0	5	16	0	0
	14	0	21		14	0	5	16	0	0
	15	1	20		15	0	3	14	0	2
	16	1	20		16	1	3	16	1	0
	17	4	17		17	1	3	12	1	2
	18	1	20		18	0	3	18	0	0
	19	0	21		19	2	7	10	2	0
	20	2	19		20	1	4	15	1	0
	21	0	21		21	0	7	12	0	1
	22	0	21		22	0	5	16	0	0
	23	0	21		23	0	3	16	0	1
	24	2	19		24	4	4	15	0	0
	25	1	20		25	2	6	14	0	0
	26	1	20		26	0	5	16	0	0
	27	0	21		27	0	7	14	0	0
	28	2	19		28	2	5	15	0	0
	29	0	21		29	1	4	15	1	0
	30	1	20		30	0	5	16	0	0
	Mean	1 (0-4)	20 (17-21)		Mean	0.8 (0-4)	4.73 (1-7)	14.83 (10-19)	0.2 (0-2)	0.37 (0-2)

Values in parentheses indicate the range of variation between cells.