

## Aberystwyth University

### *Implementation of genomic prediction in *Lolium perenne* (L.) breeding populations*

Grinberg, Nastasiya; Lovatt, Alan; Hegarty, Matthew; Macfarlane, Andrea Caroline; Skot, Kirsten; Kelly, Rhys; Blackmore, Tina; Thorogood, Danny; King, Ross D.; Armstead, Ian; Powell, Wayne; Skot, Leif

*Published in:*  
Frontiers in Plant Science

*DOI:*  
[10.3389/fpls.2016.00133](https://doi.org/10.3389/fpls.2016.00133)

*Publication date:*  
2016

*Citation for published version (APA):*

Grinberg, N., Lovatt, A., Hegarty, M., Macfarlane, A. C., Skot, K., Kelly, R., Blackmore, T., Thorogood, D., King, R. D., Armstead, I., Powell, W., & Skot, L. (2016). Implementation of genomic prediction in *Lolium perenne* (L.) breeding populations. *Frontiers in Plant Science*, 7(FEB2016), Article 133.  
<https://doi.org/10.3389/fpls.2016.00133>

#### **Document License** CC BY

#### **General rights**

Copyright and moral rights for the publications made accessible in the Aberystwyth Research Portal (the Institutional Repository) are retained by the authors and/or other copyright owners and it is a condition of accessing publications that users recognise and abide by the legal requirements associated with these rights.

- Users may download and print one copy of any publication from the Aberystwyth Research Portal for the purpose of private study or research.
- You may not further distribute the material or use it for any profit-making activity or commercial gain
- You may freely distribute the URL identifying the publication in the Aberystwyth Research Portal

#### **Take down policy**

If you believe that this document breaches copyright please contact us providing details, and we will remove access to the work immediately and investigate your claim.

tel: +44 1970 62 2400  
email: [is@aber.ac.uk](mailto:is@aber.ac.uk)

## *Supplementary Material*

# Implementation of genomic prediction in *Lolium perenne* (L.) breeding populations

Nastasiya F. Grinberg<sup>1</sup>, Alan Lovatt<sup>2</sup>, Matt Hegarty<sup>2</sup>, Andi Lovatt<sup>2</sup>, Kirsten P. Skøt<sup>2</sup>, Rhys Kelly<sup>2</sup>, Tina Blackmore<sup>2</sup>, Danny Thorogood<sup>2</sup>, Ross King<sup>1</sup>, Ian Armstead<sup>2</sup>, Wayne Powell<sup>2,3</sup>, Leif Skøt<sup>2\*</sup>

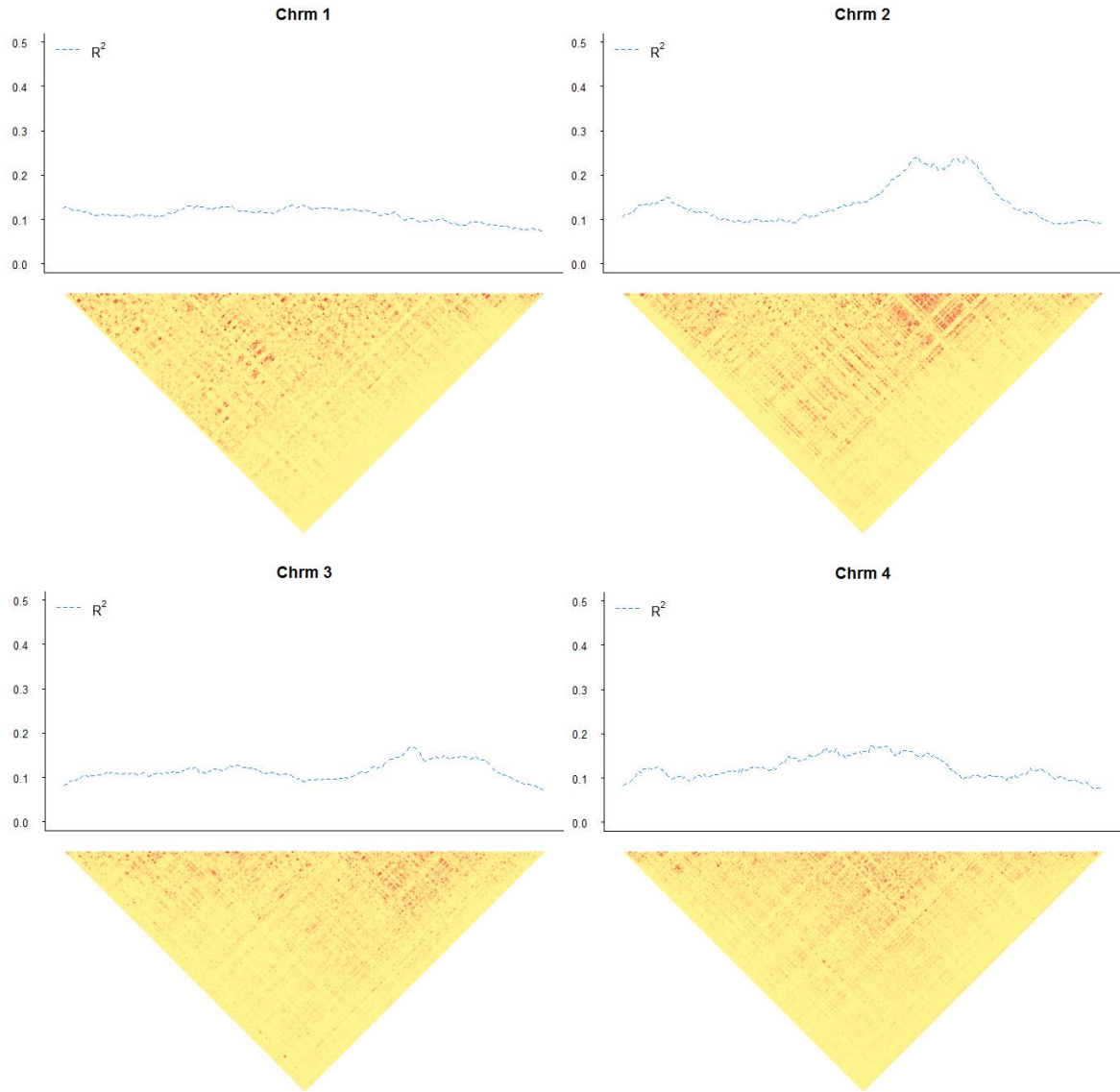
<sup>1</sup>Manchester Institute of Biotechnology, University of Manchester, Manchester, UK

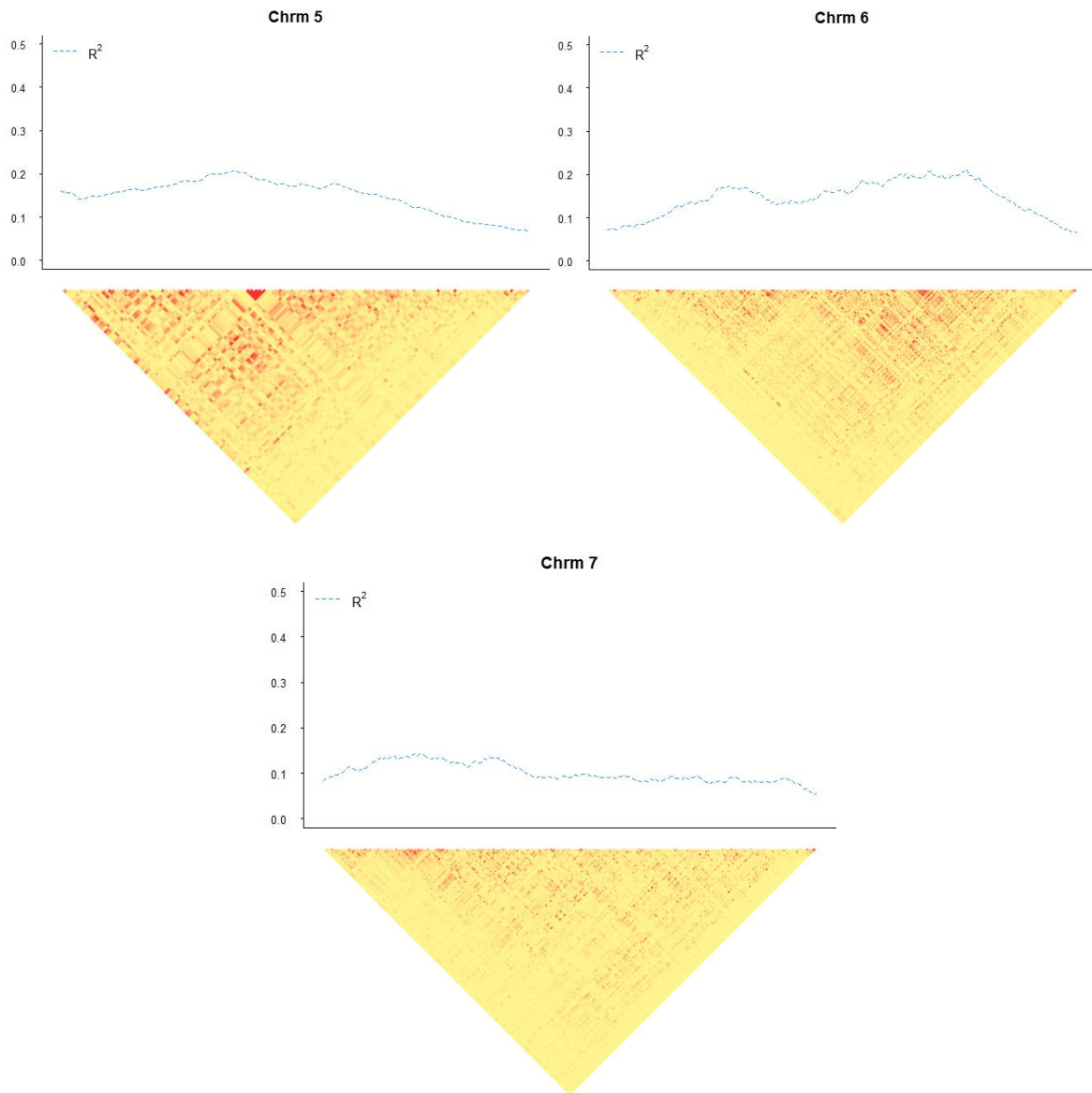
<sup>2</sup>Institute of Biological, Environmental and Rural Sciences, Aberystwyth University, Aberystwyth, UK

<sup>3</sup>CGIAR Consortium, CGIAR Consortium Office, 1000 Avenue Agropolis 34394, Montpellier, France

\* **Correspondence:** Leif Skøt, E-mail: [ifs@aber.ac.uk](mailto:ifs@aber.ac.uk)

### 1.1 Supplementary Figures





**Supplementary Figure 1.** Landscape plot and heatmaps of linkage disequilibrium in the *L. perenne* breeding populations. The landscape plots were based on a windows size of  $n=40$ , as described in Materials and Methods.