

Aberystwyth University

Spring emergence and canopy development strategies in miscanthus hybrids in Mediterranean, continental and maritime European climates

Magenau, Elena; Clifton-Brown, John; Parry, Catherine; Ashman, Chris; Awty-Carroll, Danny; Ferrarini, Andrea; Kontek, Mislav; Martani, Enrico; Amaducci, Stefano; Davey, Chris; Dolstra, Oene; Jurišić, Vanja; Kam, Jason; Trindade, Luisa M.; Lewandowski, Iris; Kiesel, Andreas

Published in:
GCB Bioenergy

DOI:
[10.1111/gcbb.13035](https://doi.org/10.1111/gcbb.13035)

Publication date:
2023

Citation for published version (APA):

Magenau, E., Clifton-Brown, J., Parry, C., Ashman, C., Awty-Carroll, D., Ferrarini, A., Kontek, M., Martani, E., Amaducci, S., Davey, C., Dolstra, O., Jurišić, V., Kam, J., Trindade, L. M., Lewandowski, I., & Kiesel, A. (2023). Spring emergence and canopy development strategies in miscanthus hybrids in Mediterranean, continental and maritime European climates. *GCB Bioenergy*, 15(5), 559-574. <https://doi.org/10.1111/gcbb.13035>

Document License
CC BY

General rights

Copyright and moral rights for the publications made accessible in the Aberystwyth Research Portal (the Institutional Repository) are retained by the authors and/or other copyright owners and it is a condition of accessing publications that users recognise and abide by the legal requirements associated with these rights.

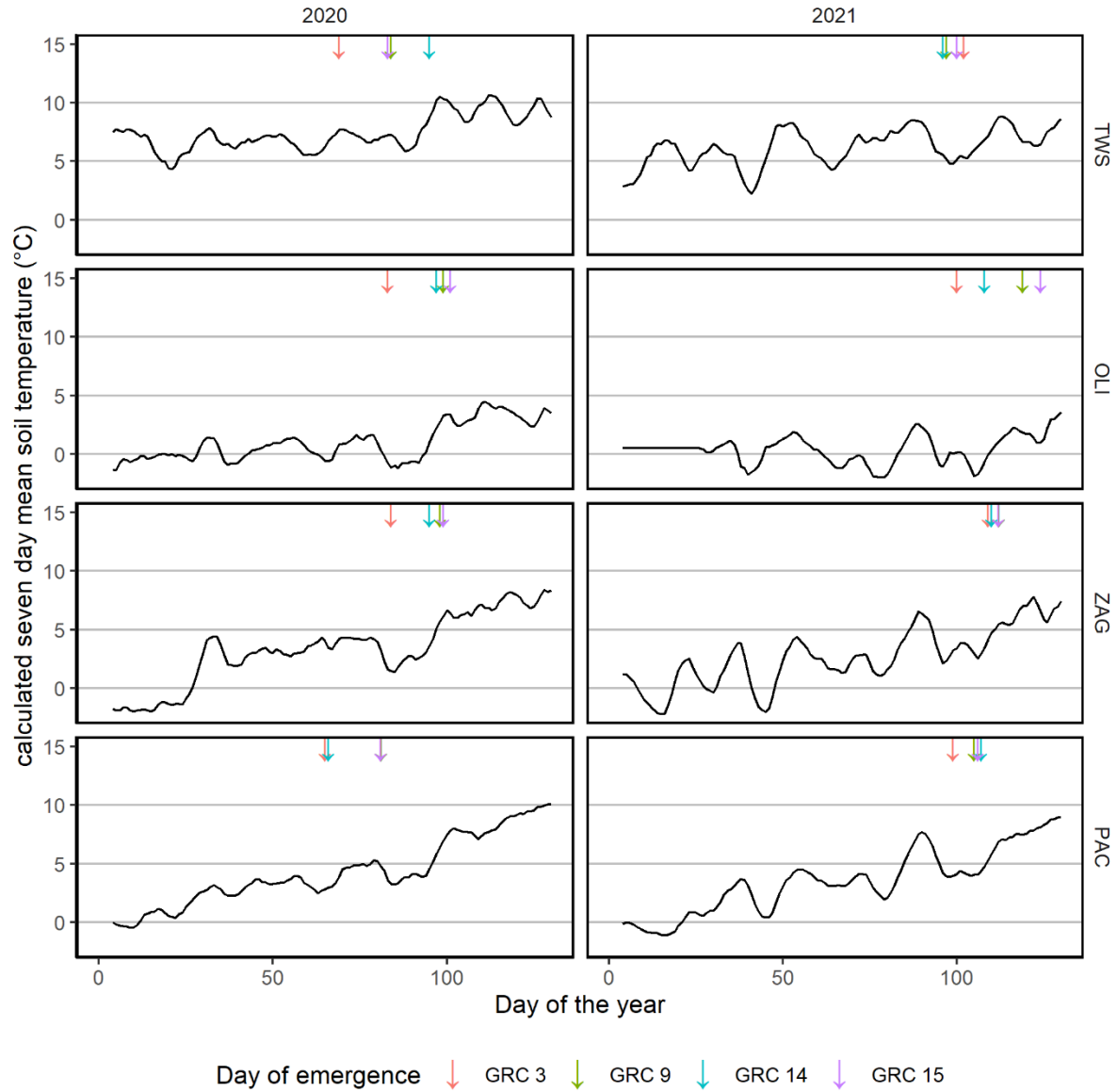
- Users may download and print one copy of any publication from the Aberystwyth Research Portal for the purpose of private study or research.
- You may not further distribute the material or use it for any profit-making activity or commercial gain
- You may freely distribute the URL identifying the publication in the Aberystwyth Research Portal

Take down policy

If you believe that this document breaches copyright please contact us providing details, and we will remove access to the work immediately and investigate your claim.

tel: +44 1970 62 2400
email: is@aber.ac.uk

Appendix



Appendix 1 Seven-day calculated mean soil temperature for the first 150 days of 2020 and 2021 (GRC 3 (*Miscanthus sinensis* × *sinensis*) and GRC 14 (*M. sacchariflorus* × *sinensis*), two-novel seed-based miscanthus hybrids; GRC 15, a novel clone of *M. sacchariflorus* × *sinensis*, and GRC 9, a standard clone of *M. × giganteus*; TWS: Trawsgoed, UK; OLI: Oberer Lindenhof, Germany; ZAG: Zagreb, Croatia and PAC: Piacenza, Italy).