

## Aberystwyth University

### *Brassica and Sinapis Seeds in Medieval Archaeological Sites*

Bosi, Giovanna; De Felice, Simona; Wilkinson, Michael J.; Allainguillaume, Joël; Arru, Laura; Nascimbene, Juri; Buldrini, Fabrizio

*Published in:*  
Plants

*DOI:*  
[10.3390/plants11162100](https://doi.org/10.3390/plants11162100)

*Publication date:*  
2022

*Citation for published version (APA):*

Bosi, G., De Felice, S., Wilkinson, M. J., Allainguillaume, J., Arru, L., Nascimbene, J., & Buldrini, F. (2022). Brassica and Sinapis Seeds in Medieval Archaeological Sites: An Example of Multiproxy Analysis for Their Identification and Ethnobotanical Interpretation. *Plants*, 11(16), Article e2100.  
<https://doi.org/10.3390/plants11162100>

#### **Document License** CC BY

#### **General rights**

Copyright and moral rights for the publications made accessible in the Aberystwyth Research Portal (the Institutional Repository) are retained by the authors and/or other copyright owners and it is a condition of accessing publications that users recognise and abide by the legal requirements associated with these rights.

- Users may download and print one copy of any publication from the Aberystwyth Research Portal for the purpose of private study or research.
- You may not further distribute the material or use it for any profit-making activity or commercial gain
- You may freely distribute the URL identifying the publication in the Aberystwyth Research Portal

#### **Take down policy**

If you believe that this document breaches copyright please contact us providing details, and we will remove access to the work immediately and investigate your claim.

tel: +44 1970 62 2400  
email: [is@aber.ac.uk](mailto:is@aber.ac.uk)

Article

# Brassica and Sinapis Seeds in Medieval Archaeological Sites: An Example of Multiproxy Analysis for Their Identification and Ethnobotanical Interpretation

Giovanna Bosi <sup>1</sup>, Simona De Felice <sup>2</sup>, Michael J. Wilkinson <sup>2</sup>, Joël Allainguillaume <sup>3</sup>, Laura Arru <sup>1</sup>, Juri Nascimbene <sup>4</sup> and Fabrizio Buldrini <sup>4,5,\*</sup>

<sup>1</sup> Department of Life Science, University of Modena and Reggio Emilia, 41125 Modena, Italy

<sup>2</sup> Institute of Biological Environmental and Rural Sciences, Aberystwyth University, Aberystwyth SY23 3EE, UK

<sup>3</sup> Department of Applied Sciences, University of the West of England, Bristol BS16 1QY, UK

<sup>4</sup> BIOME Lab—Department of Biological, Geological and Environmental Sciences, Alma Mater Studiorum University of Bologna, 40126 Bologna, Italy

<sup>5</sup> Sistema Museale di Ateneo, Alma Mater Studiorum University of Bologna, 40126 Bologna, Italy

\* Correspondence: fabrizio.buldrini@unibo.it

**Citation:** Bosi, G.; De Felice, S.; Wilkinson, M.J.; Allainguillaume, J.; Arru, L.; Nascimbene, J.; Buldrini, F. *Brassica and Sinapis Seeds in Medieval Archaeological Sites: An Example of Multiproxy Analysis for Their Identification and Ethnobotanical Interpretation*. *Plants* **2022**, *11*, 2100. <https://doi.org/10.3390/plants11162100>

Academic Editor: Adnane Boualem

Received: 15 July 2022

Accepted: 8 August 2022

Published: 12 August 2022

**Publisher's Note:** MDPI stays neutral with regard to jurisdictional claims in published maps and institutional affiliations.



**Copyright:** © 2022 by the authors. Licensee MDPI, Basel, Switzerland. This article is an open access article distributed under the terms and conditions of the Creative Commons Attribution (CC BY) license (<http://creativecommons.org/licenses/by/4.0/>).

**Abstract:** The genus *Brassica* includes some of the most important vegetable and oil crops worldwide. Many *Brassica* seeds (which can show diagnostic characters useful for species identification) were recovered from two archaeological sites in northern Italy, dated from between the Middle Ages and the Renaissance. We tested the combined use of archaeobotanical keys, ancient DNA barcoding, and references to ancient herbarium specimens to address the issue of diagnostic uncertainty. An unequivocal conventional diagnosis was possible for much of the material recovered, with the samples dominated by five *Brassica* species and *Sinapis*. The analysis using ancient DNA was restricted to the seeds with a *Brassica*-type structure and deployed a variant of multiplexed tandem PCR. The quality of diagnosis strongly depended on the molecular locus used. Nevertheless, many seeds were diagnosed down to species level, in concordance with their morphological identification, using one primer set from the core barcode site (*matK*). The number of specimens found in the Renaissance herbaria was not high; *Brassica nigra*, which is of great ethnobotanical importance, was the most common taxon. Thus, the combined use of independent means of species identification is particularly important when studying the early use of closely related crops, such as Brassicaceae.

**Keywords:** Ferrara; Lugo; northern Italy; Middle Ages; Renaissance; archaeobotany; a-DNA; herbaria

## 1. Introduction

The Brassicaceae are a large family of flowering plants with a circumpolar distribution, comprising 338 genera and 3700 species, including several major agricultural crops [1,2]. The type genus, *Brassica*, is by far the most important economically, and is currently grown in over 150 countries as a vegetable or oilseed crop [3]. Six *Brassica* species dominate current global production, viz.: *Brassica oleracea* L., *Brassica rapa* L., *Brassica napus* L., *Brassica carinata* A. Braun, *Brassica nigra* (L.) K. Koch, and *Brassica juncea* (L.) Czern [4]. Polyploidy has played a key role in the evolution of the cultivation of *Brassica* species, with allopolyploid hybridization between the three diploid species (*B. rapa*, AA, *B. nigra*, BB, and *B. oleracea*, CC) giving rise to three allotetraploids (*B. juncea*, AABB, *B. napus*, AACC, and *B. carinata*, BBCC—[5]). The domestication of these species is thought to have originated around the Mediterranean region of Europe [6–8]. The family also contains several genera that feature as minor crops, including (among others): *Raphanus* (*R. sativus* L., the radish), *Armoracia* (*A. rusticana* G. Gaertn., *B. Mey. et Scherb.*, horseradish),

*Camelina* (*C. sativa* (L.) Crantz, gold of pleasure), *Nasturtium* (*N. officinale* R. Br., watercress) and *Sinapis* (e.g., *S. alba* L., white mustard). These species have a long history of cultivation, particularly the Brassicas and *Sinapis* [9]. The Italian flora contains 70 genera with 311 species of Brassicaceae, including all of the cultivated species named above [10].

Archeological information can provide useful insights into the timing, context, and nature of domestication events, but first requires appropriate methods for the reliable identification of old, often degraded plant materials. This problem can be addressed by reference to diagnostic phenotypic and molecular information sources. The fruits of Brassicaceae are widely used to perform species diagnosis within the family and can be a useful source of information from archaeological settings when present. Most of the taxa in the family contain siliques and silicle/silicula. The distinction of many of these species is often based on the length/width ratio of the siliques, or on whether they possess bivalved capsules that open from below [11,12]. However, some taxa possess fruit structures of a different kind, such as the lomentum type found in *Raphanus* [13]. Here, too, the features are often useful for the identification of taxa. The seeds are probably the most useful in an archaeological context for diagnostic purposes, and range in shape from spherical to flattened, feature diagnostic sculpturing of the testa, and are often the dispersal unit [11].

European records of Brassicaceae associated with archaeological contexts date back to the Neolithic period, after which they spread geographically, with some records ambiguously listed as weeds s.l., but others with clear evidence of cultivation, primarily as oil crops or vegetables [9,14]. The most frequent and reliable finds for notable economic taxa have been seeds of *Brassica*, *Sinapis*, and *Camelina*, although the certainty of identification can be compromised if the condition of the seeds is poor, especially if they are charred [9]. However, when in good conditions, these features are diagnostic for several taxa [15]. Given the variability in the condition of archaeological materials, there is a need to adopt multiple approaches for species diagnosis, especially when handling partly degraded materials.

Currently, in Italy, more than 700 sites have been investigated from an archaeobotanical viewpoint [16,17]. In the prehistorical period, Brassicaceae seeds were practically irrelevant in the sites of northern Italy [18,19], whereas in a synthesis on the seeds/fruits of food plants for the Roman period in northern Italy, only a few seeds of *Brassica* sp. pl. and *Sinapis alba* were found in 4 sites out of 70 (ca. 6%), and never in funerary-ritual contexts [20,21]. Based on the preliminary data of an analogous synthesis for the Middle Ages/Renaissance period [22], remains of the taxa examined were found in 19 sites out of ca. 50 (about 40%), of which 16 were in the Emilia-Romagna region.

An archaeological site in the historic centre of Ferrara (Emilia-Romagna, Northern Italy—Figure 1) has revealed deposits, datable to between the Middle Ages and the Renaissance, rich in botanical records, which are still being studied. This site contains an unusually large quantity of Brassicaceae seeds (in particular of *Brassica/Sinapis* type), and was therefore deemed likely to present challenges for reliable species identification. Similarly, another coeval site in Lugo (Ravenna, Emilia-Romagna—Figure 1) also returned a good number of *Brassica/Sinapis* seeds and was also considered a suitable site to investigate the fidelity of species assignation.



**Figure 1.** The two archaeological sites examined: Ferrara (context I—no. 16c) and Lugo (context II—no. 15); geographic location (a), overview of archaeological excavation (b,c) and pits (d,e). Photographs presented with permission from Soprintendenza Archeologia, Belle Arti e Paesaggio Bologna-Modena-Reggio Emilia-Ferrara.

In this study, the seeds were investigated by morphometric and genetic analyses. Furthermore, a historical and ethnobotanical interpretation of the taxa was performed using written sources and the *exsiccata* present in the oldest Italian herbaria.

## 2. Results

The Emilia-Romagna archaeological sites dating from the 6th to the 17th century AD included 19 contexts in which seeds were found, although in the majority of these (about 58%), the seeds were present at concentrations below 1 seed/L. Furthermore, in the vast majority of the contexts (about 84%), *Brassica* and *Sinapis* seeds/fruits accounted for <1% of all the seeds/fruits recovered. In 7 contexts (nos. 3, 7, 12a, 13, 15, 16a and 16b), the concentration of seeds/fruits varied between 1 and 13 seeds/L, although in all these cases, the Brassicaceae seeds represented  $\leq 1\%$  of all the seeds found. The sole context that showed a notable divergence from these trends was the brick tank in Ferrara (no. 16c—context I in Materials and methods), where the concentration of *Brassica/Sinapis* exceeded 1700 seeds/L and accounted for more than 10% of all the seeds found. An intermediate condition was observed in the coeval context no. 15, where *Brassica/Sinapis* were found in modest concentrations (8 seeds/L) and represented < 1% of all the seeds collected (Table 1).



<i>Raphanus raphanistrum</i>	lomantum segment, seed	x											xx				x	x	x	
<i>Rapistrum rugosum</i>	silicle, silicle basis		xxxx	x	x		xxxxxx	xx	xx		xxxxx			x		xxxxx	xx	xx		
<i>Rorippa</i> cfr. <i>amphibia</i>	seed		x																	
<i>Rorippa</i> sp.	seed																	x	x	
<i>Sisymbrium</i> sp.	seed																		x	
no. seeds/liter <i>Brassica/Sinapis</i>		<1	?	1	<1	<1	<1	1	<1	<1	<1	<1	1	<1	2	<1	8	13	5	1734
% <i>Brassica/Sinapis</i> seeds out of total sf		<1%	<1%	1%	<1%	<1%	<1%	<1%	<1%	<1%	<1%	<1%	<1%	<1%	<1%	<1%	<1%	1%	<1%	11%
% Brassicaceae sf out of total sf		<1%	<1%	6%	1%	<1%	<1%	<1%	7%	<1%	<1%	<1%	2%	<1%	<1%	<1%	<1%	2%	1%	11%

No. of sf: 1 to 20—x; 21 to 100—xx; 101 to 300—xxx; 301 to 500—xxxx; 501 to 1500—xxxxx; over 1500—xxxxxx.

### 2.1. Archaeobotanical Analysis

The individual plant taxa varied in the distribution of the contexts in which they were found. The most widely found of the taxa identified to species rank were *Rapistrum rugosum* (L.) All. (11 of 19 contexts) and *Brassica rapa* (11 contexts), although the latter was far more abundant throughout. Most of the other species featured only in a minority of the contexts surveyed. For example, *Sinapis alba* seeds were identified with high certainty in several contexts, although few such seeds were found overall (present in 4 of the 19 contexts). The seeds of the genus *Brassica* were more abundant, with well-preserved representatives of 5 distinct species recorded in 11 of the 19 contexts (*B. rapa*, *B. napus*, *B. juncea*, *B. nigra*, and *B. oleracea*). Of these, the vast majority (ca. 95%) were discarded as *B. rapa*, but the residual *Brassica* seeds were far more restricted and subdivided between *B. nigra* (1.6%; 2 contexts), *B. napus* (1.4%; 5 contexts), *B. oleracea* (<1%; 1 context), and *B. juncea* (<1%; 1 context). Most of the other confirmed species were similarly restricted to 5 contexts or less, the sole exception being *Myagrimum perfoliatum* L. (8 contexts).

The presence of less well-preserved or abnormal/intermediate samples meant that many of the samples could only be identified at higher taxonomic levels. For instance, around 2.5% of the seeds could only be provisionally identified as either unknown *Brassica* seeds (*Brassica* sp.) or as *Brassica/Sinapis* seeds, and species identity could not be determined for the seeds of the genera *Lepidium* (3 contexts), *Rorippa* (2), or *Sisymbrium* (1); the genus even remained unidentifiable for some seeds.

In addition to *Brassica* sp.pl. and *Sinapis alba*, some other taxa may also have had ethnobotanical value (e.g., *Camelina sativa* and *Isatis tinctoria* L.); others were probably simple instances of weeds s.l.

### 2.2. a-DNA Barcoding

As expected, the ancient seed samples invariably provided DNA yields that were too low and degraded to allow detection by agarose-gel electrophoresis or conventional spectral photometry. Similarly, all attempts using standard barcode primers and protocols used for conventional *rbcL* or *matK* barcoding failed to generate detectable amplicons. The application of the MT-PCR method did nevertheless succeed in producing visible amplicons for both barcoding genes. Success was modest for *rbcL*. The first of the two regions targeted (*rbcL1*) yielded only 8 products of the expected 218 bp, but none of the sequences generated from these amplicons matched either the *Brassica* or the *Sinapis* species expected from the seed morphology. However, 39 seeds produced strong amplification products for the second region (*rbcL2*, 203 bp), and most of these yielded sequences of variable quality in both directions. BLASTn searches of the trimmed sequences against the NCBI database invariably identified the appropriate region of *rbcL*. Subsequent searches of the BOLD Systems database revealed matches with sequence homologies above 95% for all but 8 of the samples (Table 2). Most of the remaining samples matched the species that were clearly incongruent with the seed morphology and were therefore deemed contaminant amplicons. Most of these matched species or genera that were likely to have been in the vicinity of the excavation sites, such as *Citrus*, *Juniperus*, *Pinus*, *Picea* or *Cedrus*. Thus, only nine samples were matched most closely to the three *Brassica* species (*B. rapa*, *B. napus* and *B. oleracea*) in the BOLD Systems database and the reference panel (Table 2).

**Table 2.** Taxonomic diagnosis using *rbcL*. Best match results recovered on BOLD Systems v4 database using amplicon sequences of *rbcL* recovered from the study sites. The percentage sequence identity and similarity score are shown, along with whether the probability of a match was lower than  $10^{-5}$ . The final column indicates the level of diagnosis possible using the sequence data alone and the species sharing the highest hit.

Sample Code	% Similarity	Score	<10 <sup>-5</sup>	Level of Diagnosis Possible Using Sequence Alone (Top Hits in Brackets)
15-197	97.2	133	1	Spermatophyta ( <i>Hyoscyamus niger</i> , <i>Juniperus chinensis</i> , <i>Platycladus orientalis</i> )
15-187	95	118	1	Spermatophyta ( <i>Hesperotropis leylandii</i> )
15-192	97	130	1	Angiospermae ( <i>Glycine max</i> )
15-194	94.8	86	1	<i>Brassica</i> spp. ( <i>Brassica rapa</i> , <i>B. oleracea</i> or <i>B. napus</i> )
15-199	98.5	126	1	Spermatophyta ( <i>Picea abies</i> )
15-204	99.6	119	1	Angiospermae ( <i>Orchidantha siamensis</i> )
15-205	\	\	\	No match > 94%
15-209	\	\	\	No match > 94%
15-201	97.5	125	0	Angiospermae ( <i>Soleirolia soleirolii</i> )
16-c-145	\	\	\	No match > 94%
16-c-149	96	185	1	<i>Brassica</i> spp. ( <i>Brassica rapa</i> , <i>B. oleracea</i> or <i>B. napus</i> )
16-c-151	98	189	1	Spermatophyta ( <i>Cedrus deodara</i> )
16-c-152	100	201	1	<i>Brassica</i> spp. ( <i>Brassica rapa</i> , <i>B. oleracea</i> or <i>B. napus</i> )
16-c-153	96	183	1	Angiospermae ( <i>Urtica dioica</i> )
16-c-156	97	187	1	Angiospermae ( <i>Glycine max</i> )
16-c-159	100	30	0	<i>Brassica</i> spp. ( <i>Brassica rapa</i> , <i>B. oleracea</i> or <i>B. napus</i> )
16-c-159	99.1	109	1	Brassicaceae spp. ( <i>Brassica rapa</i> , <i>B. oleracea</i> , <i>B. napus</i> , <i>Sinapis arvensis</i> , <i>Berteroa incana</i> , <i>Cardamine bulbifera</i> , <i>Cakile maritima</i> , <i>Crambe maritima</i> , <i>Sinapis alba</i> )
16-c-164	100	26	0	<i>Brassica</i> spp. ( <i>Brassica rapa</i> , <i>B. oleracea</i> or <i>B. napus</i> )
16-c-166	97.5	110	1	Angiospermae ( <i>Glycine max</i> )
16-c-167	96.7	142	1	Spermatophyta ( <i>Hyoscyamus niger</i> )
16-c-169	96.6	109	1	Spermatophyta ( <i>Hyoscyamus niger</i> , <i>Juniperus chinensis</i> , <i>Platycladus orientalis</i> )
16-c-171	\	\	\	Spermatophyta (no match > 94%)
16-c-172	\	\	\	Spermatophyta (no match > 94%)
16-c-173	\	\	\	Spermatophyta (no match > 94%)
16-c-174	94.1	27	0	Brassicaceae spp. ( <i>Brassica rapa</i> )
16-c-181	\	\	\	Spermatophyta (no match > 94%)
16-c-182	97.8	187	1	Spermatophyta ( <i>Pinus</i> spp.)
16-c-184	97	107	1	Angiospermae ( <i>Saniculiphyllum guangxiense</i> )
16-c-186	98.5	197	1	<i>Brassica</i> spp. ( <i>Brassica rapa</i> , <i>B. oleracea</i> or <i>B. napus</i> )
16-c-220	\	\	\	Spermatophyta (no match > 94%)
16-c-222	98	155	1	<i>Brassica</i> spp. ( <i>Brassica rapa</i> , <i>B. oleracea</i> or <i>B. napus</i> )
16-c-221	97.3	671	1	Spermatophyta ( <i>Cedrus deodara</i> )
16-c-121	98.4	173	1	<i>Brassica</i> spp. ( <i>Brassica rapa</i> , <i>B. oleracea</i> or <i>B. napus</i> )
Control ( <i>B. napus</i> )	98.3	167	1	<i>Brassica</i> spp. ( <i>Brassica rapa</i> , <i>B. oleracea</i> or <i>B. napus</i> )

Greater success was achieved using primers that targeted the *matK* gene. Here, all six loci targeted within the *matK* gene produced sequences that corresponded to one of several members of the Brassicaceae. These are each described below, in turn.

*MatK1*. The different *matK* primers for this amplicon varied in their capacity to generate viable products and in the ability of the resultant sequences to differentiate between species held on public databases. The conventional *matK1* primers performed the least well. These primers yielded only 12 sequences of modest quality, and none matched significantly with any reference barcode held on either the BOLD Systems or on the NCBI database. The performances of the *matk1a* primers were substantially better, with modest quality sequences of 42–182 bp in length (after trimming) secured from 64 samples. Here, matches were recovered for 41 of the 65 samples. Most of these matched equally well to multiple species in terms of percentage identity, score quality, and e-value, but in all cases, the most strongly matched species were all members of the Brassicaceae family. A finer-level diagnosis than family was not possible for 7 samples, but of the remaining sequences, 16 were assigned to the tribe Brassiceae, 10 to the genus *Brassica*, one to another genus in the family, four to a single species of *Brassica*, and three to another species within the



family (Supplementary Information Table S1). The *matk1b* primers yielded fewer sequences (26), but these were generally longer (150–212 bp) than the *matk1a*. Again, matches were secured for all 26 using NCBI BLASTn searches (Supplementary Information Table S1). Of these, 14 matched two or more species of *Brassica* (genus-level diagnosis) and six matched a single *Brassica* species. The remaining six samples matched species, genera, or families outside the Brassicaceae and were therefore deemed contaminant sequences. The performance of *matk1c* was slightly improved compared with the other *matK1* combinations. Trimmed sequences of between 118 and 181 bp were secured from 36 samples. Following BLASTn searches of the NCBI database, 26 species were matched to two or more species of *Brassica* and one was identified to a single *Brassica* species. The remaining samples were identified to the same level as the BOLD systems.

*MatK4*. These primers generated 19 sequences of generally good quality that varied in length between 189 and 279 bp, with 17 sequences falling in the range of 262–279 bp. Searches using these sequences produced matches with both databases (Supplementary Information Table S1). Following sequence-homology searches, all except the shortest sequence matched two or more members of the genus *Brassica* (genus-level diagnosis). The shortest sequence failed to match any species above the 95% similarity threshold.

*MatK5*. This combination of primers generated the most extensive set of sequences (90 samples), which varied in length from 75 to 225 bp. These sequences generated diagnoses at various taxonomic levels when searched against both public databases (Table 3). The finest level of diagnosis was obtained when these sequences were subject to BLASTn searches on the NCBI database. Here, no sequences matched the reference barcodes of a single species. However, the number of hits on the NCBI database was high enough that the frequency of hits to one target frequently allowed the provisional identification of the sample. For example, 11 samples matched equally with 52 reference sequences of *B. oleracea*, but also to four other sequences representing three other species. Given the scope for misidentification and the extent of hybridization in the genus, these 11 sample sequences were therefore designated as provisional *B. oleracea*. Similar frequency distributions were also noted for 17 sample sequences matching *B. nigra* and its allotetraploid sister species, *B. carinata*. However, given that the latter is native to Eastern Africa [40], these samples were provisionally identified as *B. nigra* only. The diploid–allotetraploid sister pairing of *B. napus*/*B. rapa* could not be distinguished using this amplicon, but collectively produced another highly skewed distribution, with 11 sample sequences falling into this category (provisional *B. napus* or *B. rapa*). Thus, samples assigned to *Brassica* species belonging to the cultivated U-triangle group [5] accounted for 43% (39/90) of the sequences retrieved. Among the remainder, a further 7 samples matched multiple *Brassica* species equally (genus level diagnosis). The residual 45 samples (50%) were identified at tribe or family level or with a single species of the family outside the type genus *Brassica*, and were therefore deemed inaccurate diagnoses on the basis of incongruence with seed morphology (species-level diagnosis, Brassicaceae; see Table 3).

**Table 3.** Taxonomic diagnosis using *matK5*. Best match results recovered on BOLD Systems v4 and NCBI databases using amplicon sequences of *matK5* recovered from the study sites (only the highest match is shown). The percentage sequence identity and similarity score are shown, along with whether probability of a match was lower than  $10^{-5}$ . The species sharing the highest number of hits are provided, along with the lowest level of taxonomic diagnosis possible based on aDNA (given that all seeds possessed Brassicaceae-type seed morphology).

Highest Sequence Match Using NCBI and BLASTn/BOLD Systems Searches					
Sample Code	% Identity	Score	e-Value	Top Hit/Hit Species/Genera	Level of Diagnosis
14-91	97.48	270	$3.00 \times 10^{-68}$	Brassicaceae spp.	Family (Brassicaceae)
15-208	99.34	276	$6.00 \times 10^{-70}$	<i>Brassica oleracea</i> (other <i>Brassica</i> spp.)	Provisional <i>B. oleracea</i>
15-253	99.18	219	$8.00 \times 10^{-53}$	<i>Sisymbrium aculeolatum</i>	Species (Brassicaceae)
15-258	100	182	$8.00 \times 10^{-41}$	<i>Brassica nigra</i> , <i>B. carinata</i>	Provisional <i>B. nigra</i>
15-267	96.86	263	$5.00 \times 10^{-66}$	<i>Brassica nigra</i> , <i>B. carinata</i> ( <i>Diplotaxis</i> )	Provisional <i>B. nigra</i>
15-27	100	165	$7.00 \times 10^{-37}$	Brassicaceae spp.	Family (Brassicaceae)
15-27	100	291	$2.00 \times 10^{-74}$	<i>Sisymbrium aculeolatum</i>	Species (Brassicaceae)
15-275	100	292	$6.00 \times 10^{-75}$	<i>Brassica nigra</i> , <i>B. carinata</i> ( <i>Diplotaxis</i> )	Provisional <i>B. nigra</i>
15-29	100	291	$2.00 \times 10^{-74}$	<i>Sisymbrium aculeolatum</i>	Species (Brassicaceae)
15-30	99.37	287	$3.00 \times 10^{-73}$	Brassicaceae spp.	Family (Brassicaceae)
15-31	97.48	276	$6.00 \times 10^{-70}$	Brassicaceae spp.	Family (Brassicaceae)
15-36	100	291	$3.00 \times 10^{-74}$	<i>Sisymbrium aculeolatum</i>	Species (Brassicaceae)
15-41	100	291	$2.00 \times 10^{-74}$	<i>Brassica napus</i> ( <i>B. rapa</i> )	<i>B. napus</i> / <i>B. rapa</i>
15-88	98.09	279	$5.00 \times 10^{-71}$	Brassicaceae spp.	Family (Brassicaceae)
15-89	100	291	$2.00 \times 10^{-74}$	<i>Brassica napus</i> ( <i>B. rapa</i> )	<i>B. napus</i> / <i>B. rapa</i>
15-90	100	291	$2.00 \times 10^{-74}$	<i>Brassica napus</i> ( <i>B. rapa</i> )	<i>B. napus</i> / <i>B. rapa</i>
15-92	100	291	$2.00 \times 10^{-74}$	<i>Brassica nigra</i> , <i>B. carinata</i> ( <i>Diplotaxis</i> )	Provisional <i>B. nigra</i>
15-93	99.36	285	$1.00 \times 10^{-72}$	Brassicaceae spp.	Family (Brassicaceae)
15-269	100	289	$8.00 \times 10^{-74}$	<i>Brassica nigra</i> , <i>B. carinata</i> ( <i>Diplotaxis</i> )	Provisional <i>B. nigra</i>
15-270	100	235	$8.00 \times 10^{-58}$	<i>Brassica nigra</i> , <i>B. carinata</i> ( <i>Diplotaxis</i> )	Provisional <i>B. nigra</i>
16-a-1	99.36	283	$4.00 \times 10^{-72}$	Brassicaceae spp.	Family (Brassicaceae)
16-a-1	98.31	206	$5.00 \times 10^{-49}$	<i>Sisymbrium aculeolatum</i>	Species (Brassicaceae)
16-a-10	100	198	$8.00 \times 10^{-47}$	<i>Sisymbrium aculeolatum</i>	Species (Brassicaceae)
16-a-11	98.75	141	$9.00 \times 10^{-30}$	Brassicaceae spp.	Family (Brassicaceae)
16-a-11	100	139	$3.00 \times 10^{-29}$	Brassicaceae spp.	Family (Brassicaceae)
16-a-12	100	261	$1.00 \times 10^{-65}$	<i>Sisymbrium aculeolatum</i>	Species (Brassicaceae)
16-a-14	99.08	196	$3.00 \times 10^{-46}$	Brassicaceae spp.	Family (Brassicaceae)
16-a-16	100	224	$2.00 \times 10^{-54}$	<i>Brassica</i> spp.	Genus ( <i>Brassica</i> )
16-a-17	99.03	185	$6.00 \times 10^{-43}$	<i>Diplotaxis tenuifolia</i> , <i>Eruca vesicaria</i>	Family (Brassicaceae)
16-a-18	99.12	206	$5.00 \times 10^{-49}$	<i>Sisymbrium aculeolatum</i>	Species (Brassicaceae)
16-a-19	99.37	287	$3.00 \times 10^{-73}$	<i>Brassica oleracea</i> (other <i>Brassica</i> spp.)	provisional <i>B. oleracea</i>
16-a-2	100	217	$3.00 \times 10^{-52}$	<i>Sisymbrium aculeolatum</i>	Species (Brassicaceae)
16-a-20	100	291	$2.00 \times 10^{-74}$	<i>Brassica nigra</i> , <i>B. carinata</i> ( <i>Diplotaxis</i> )	Provisional <i>B. nigra</i>
16-a-21	100	206	$5.00 \times 10^{-49}$	<i>Brassica napus</i> ( <i>B. rapa</i> )	<i>B. napus</i> / <i>B. rapa</i>
16-a-223	100	281	$1.00 \times 10^{-71}$	<i>Diplotaxis tenuifolia</i> , <i>Eruca vesicaria</i>	Family (Brassicaceae)
16-a-229	100	292	$6.00 \times 10^{-75}$	<i>Brassica oleracea</i> (other <i>Brassica</i> spp.)	provisional <i>B. oleracea</i>
16-a-229	100	176	$3.00 \times 10^{-40}$	<i>Diplotaxis tenuifolia</i> , <i>Eruca vesicaria</i>	Family (Brassicaceae)
16-a-23	100	171	$1.00 \times 10^{-38}$	<i>Brassica</i> spp.	Genus ( <i>Brassica</i> )
16-a-230	99.12	204	$2.00 \times 10^{-48}$	Brassicaceae spp.	Family (Brassicaceae)
16-a-231	97.44	267	$4.00 \times 10^{-67}$	<i>Acer</i> spp.	Family (non-Brassicaceae)
16-a-24	100	291	$2.00 \times 10^{-74}$	<i>Brassica napus</i> ( <i>B. rapa</i> )	<i>B. napus</i> / <i>B. rapa</i>
16-a-3	100	263	$4.00 \times 10^{-66}$	<i>Brassica napus</i> ( <i>B. rapa</i> )	<i>B. napus</i> / <i>B. rapa</i>
16-a-4	100	154	$1.00 \times 10^{-33}$	Brassicaceae spp.	Family (Brassicaceae)
16-a-4	100	220	$2.00 \times 10^{-53}$	Brassicaceae spp.	Family (Brassicaceae)
16-a-5	99.36	281	$1.00 \times 10^{-71}$	Brassicaceae spp.	Family (Brassicaceae)
16-a-7	100	182	$7.00 \times 10^{-42}$	Brassicaceae spp.	Family (Brassicaceae)
16-a-74	100	292	$6.00 \times 10^{-75}$	<i>Brassica oleracea</i> (other <i>Brassica</i> spp.)	Provisional <i>B. oleracea</i>
16-a-74	100	291	$2.00 \times 10^{-74}$	<i>Brassica oleracea</i> (other <i>Brassica</i> spp.)	Provisional <i>B. oleracea</i>
16-a-75	100	209	$4.00 \times 10^{-50}$	<i>Brassica oleracea</i> (other <i>Brassica</i> spp.)	Provisional <i>B. oleracea</i>
16-a-76	100	291	$2.00 \times 10^{-74}$	<i>Brassica oleracea</i> (other <i>Brassica</i> spp.)	Provisional <i>B. oleracea</i>
16-a-79	99.35	278	$2.00 \times 10^{-70}$	<i>Sisymbrium aculeolatum</i>	Species (Brassicaceae)
16-a-8	100	180	$3.00 \times 10^{-41}$	<i>Brassica</i> spp.	Genus ( <i>Brassica</i> )
16-a-82	99.36	285	$1.00 \times 10^{-72}$	<i>Brassica nigra</i> , <i>B. carinata</i> ( <i>Diplotaxis</i> )	Provisional <i>B. nigra</i>
16-a-83	100	291	$2.00 \times 10^{-74}$	<i>Sisymbrium aculeolatum</i>	Species (Brassicaceae)
16-a-9	100	187	$2.00 \times 10^{-43}$	Brassicaceae spp.	Family (Brassicaceae)

16-a-97	99.37	287	$3.00 \times 10^{-73}$	<i>Brassica nigra</i> , <i>B. carinata</i> ( <i>Diplotaxis</i> )	Provisional <i>B. nigra</i>
16-c-121	99.34	276	$6.00 \times 10^{-70}$	<i>Brassica</i> spp.	Genus ( <i>Brassica</i> )
16-c-121	99.37	287	$3.00 \times 10^{-73}$	<i>Brassica</i> spp.	Genus ( <i>Brassica</i> )
16-c-123	99.35	281	$1.00 \times 10^{-71}$	<i>Brassica</i> spp.	Genus ( <i>Brassica</i> )
16-c-123	97.92	165	$7.00 \times 10^{-37}$	Brassicaceae spp.	Family (Brassicaceae)
16-c-123	100	143	$2.00 \times 10^{-30}$	Brassicaceae spp.	Family (Brassicaceae)
16-c-138	100	176	$3.00 \times 10^{-40}$	Brassicaceae spp.	Family (Brassicaceae)
16-c-163	100	281	$1.00 \times 10^{-71}$	<i>Brassica nigra</i> , <i>B. carinata</i> ( <i>Diplotaxis</i> )	Provisional <i>B. nigra</i>
16-c-163	100	292	$6.00 \times 10^{-75}$	<i>Brassica nigra</i> , <i>B. carinata</i> ( <i>Diplotaxis</i> )	Provisional <i>B. nigra</i>
16-c-169	100	265	$1.00 \times 10^{-66}$	<i>Brassica oleracea</i> (other <i>Brassica</i> spp.)	Provisional <i>B. oleracea</i>
16-c-172	100	276	$6.00 \times 10^{-70}$	<i>Brassica oleracea</i> (other <i>Brassica</i> spp.)	Provisional <i>B. oleracea</i>
16-c-177	100	281	$1.00 \times 10^{-71}$	<i>Brassica nigra</i> , <i>B. carinata</i> ( <i>Diplotaxis</i> )	Provisional <i>B. nigra</i>
16-c-178	100	292	$6.00 \times 10^{-75}$	<i>Brassica oleracea</i> (other <i>Brassica</i> spp.)	Provisional <i>B. oleracea</i>
16-c-247	100	292	$9.00 \times 10^{-75}$	<i>Brassica nigra</i> , <i>B. carinata</i> ( <i>Diplotaxis</i> )	Provisional <i>B. nigra</i>
16-c-303	100	291	$2.00 \times 10^{-74}$	<i>Brassica oleracea</i> (other <i>Brassica</i> spp.)	Provisional <i>B. oleracea</i>
16-c-315	100	182	$7.00 \times 10^{-42}$	<i>Brassica</i> spp. ( <i>Eruca</i> )	Genus ( <i>Brassica</i> )
16-c-42	98.73	279	$5.00 \times 10^{-71}$	Brassicaceae spp.	Family (Brassicaceae)
16-c-45	100	291	$2.00 \times 10^{-74}$	<i>Sisymbrium aculeolatum</i>	Species (Brassicaceae)
16-c-46	99.36	287	$1.00 \times 10^{-71}$	<i>Brassica napus</i> ( <i>B. rapa</i> )	<i>B. napus</i> / <i>B. rapa</i>
16-c-46	100	292	$8.00 \times 10^{-75}$	<i>Brassica napus</i> ( <i>B. rapa</i> )	<i>B. napus</i> / <i>B. rapa</i>
16-c-49	98.74	281	$1.00 \times 10^{-71}$	<i>Brassica nigra</i> , <i>B. carinata</i> ( <i>Diplotaxis</i> )	Provisional <i>B. nigra</i>
16-c-49	100	291	$2.00 \times 10^{-74}$	<i>Sisymbrium aculeolatum</i>	Species (Brassicaceae)
16-c-50	100	283	$4.00 \times 10^{-72}$	<i>Brassica napus</i> ( <i>B. rapa</i> )	<i>B. napus</i> / <i>B. rapa</i>
16-c-57	100	291	$2.00 \times 10^{-74}$	<i>Sisymbrium aculeolatum</i>	Species (Brassicaceae)
16-c-59	100	285	$1.00 \times 10^{-72}$	<i>Brassica napus</i> ( <i>B. rapa</i> )	<i>B. napus</i> / <i>B. rapa</i>
16-c-6	99.1	202	$7.00 \times 10^{-48}$	<i>Brassica napus</i> ( <i>B. rapa</i> )	<i>B. napus</i> / <i>B. rapa</i>
16-c-62	100	291	$2.00 \times 10^{-74}$	<i>Brassica nigra</i> , <i>B. carinata</i> ( <i>Diplotaxis</i> )	Provisional <i>B. nigra</i>
16-c-64	100	291	$2.00 \times 10^{-74}$	<i>Sisymbrium aculeolatum</i>	Species (Brassicaceae)
16-c-66	98.71	278	$2.00 \times 10^{-70}$	Brassicaceae spp.	Family (Brassicaceae)
16-c-67	98.73	279	$5.00 \times 10^{-71}$	<i>Sisymbrium aculeolatum</i>	Species (Brassicaceae)
16-c-69	98.74	281	$1.00 \times 10^{-71}$	<i>Sisymbrium aculeolatum</i>	Species (Brassicaceae)
16-c-70	100	291	$2.00 \times 10^{-74}$	<i>Sisymbrium aculeolatum</i>	Species (Brassicaceae)
16-c-71	99.36	287	$3.00 \times 10^{-73}$	<i>Brassica nigra</i> , <i>B. carinata</i> ( <i>Diplotaxis</i> )	Provisional <i>B. nigra</i>
16-c-72	99.36	285	$1.00 \times 10^{-72}$	<i>Brassica nigra</i> , <i>B. carinata</i> ( <i>Diplotaxis</i> )	Provisional <i>B. nigra</i>
16-c-73	100	291	$2.00 \times 10^{-74}$	<i>Sisymbrium aculeolatum</i>	Species (Brassicaceae)

### 2.3. Information from Ancient Herbaria

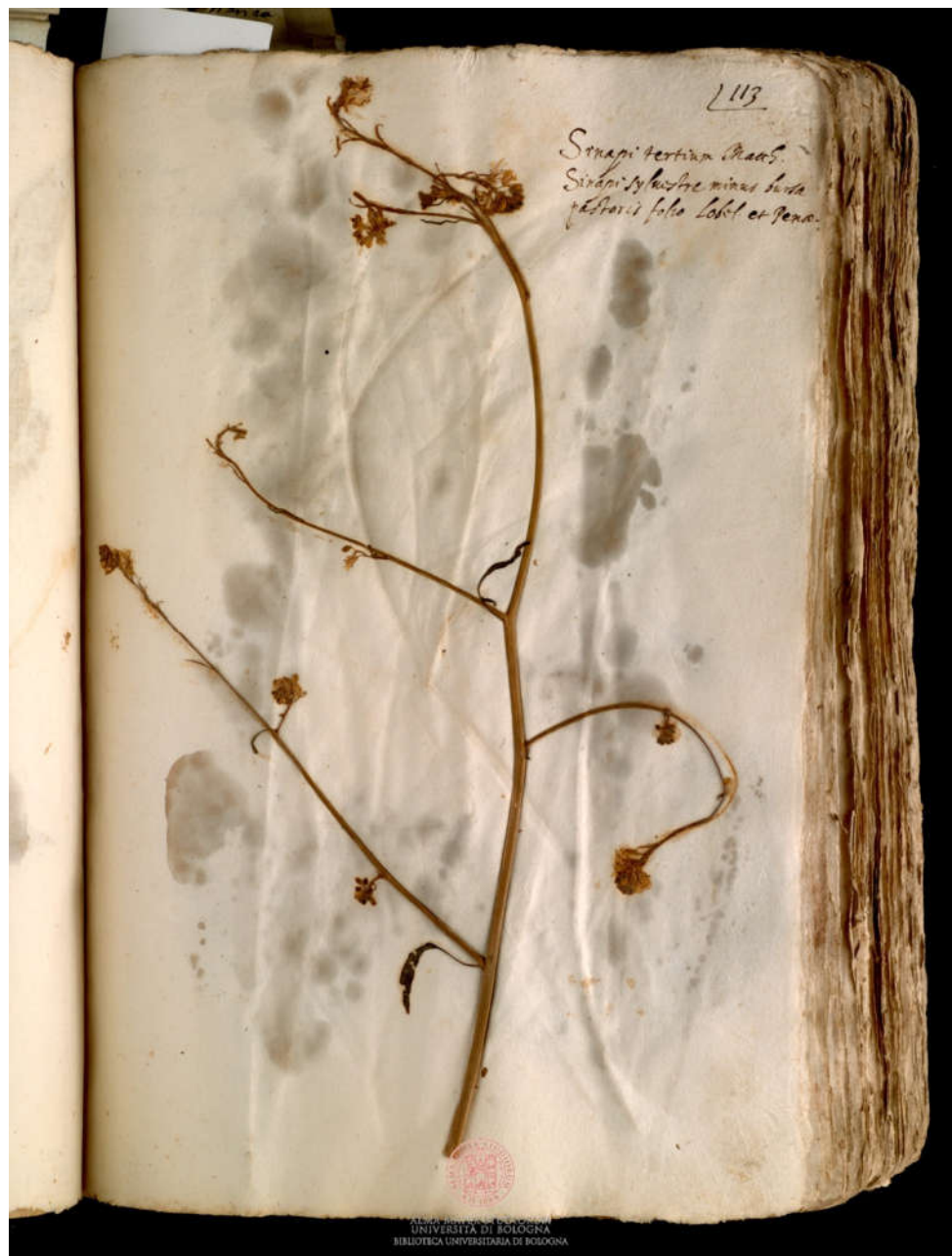
The search for samples of *Brassica* and *Sinapis* produced results only for 3 of the 7 assessed herbaria and made it possible to find 25 specimens (Table 4). The species recognized with certainty were *B. napus*, *B. nigra*, *B. oleracea*, *B. rapa* and *S. alba*; also in addition, some of the specimens were not clearly identifiable, and were therefore doubtfully attributed to the cited species, or simply to *Brassica* sp.

Erbario Aldrovandi provided the best information, with 18 specimens belonging to 4 species (*B. nigra*, *B. oleracea*, *B. rapa* and *S. alba*), which were dated to the period 1551–1586 [41–45]. Erbario ex Cibo B provided 6 specimens and 4 species (*B. napus*, *B. nigra*, *B. oleracea* and *S. alba*), datable at the period 1550–1553 [46,47]. Erbario Cesalpino provided only 1 specimen of *B. nigra*, datable at the period 1555–1563 [48].

**Table 4.** Synopsis of the specimens of *Brassica* and *Sinapis* species found in the Italian Renaissance herbaria. The identification and the attribution to a currently accepted species follow [41–46,48]; nomenclature is updated according to [49]. The question mark within brackets indicates a doubtful identification (*Brassica* cfr. *napus* etc.).

Herbaria	ex Cibo B	Aldrovandi	Cesalpino
Chronology	1550–1553	1551–1586	1555–1563
Area	Romagna? (Italy)	Italy (Bologna, Padova, Verona, Pisa), Swiss Alps, and Constantinople	Tuscany (Italy)
Depository	Biblioteca Angelica, Rome (Italy)	University of Bologna (Italy)	University of Florence (Italy)
<i>Brassica napus</i> L.	n. 831: <i>Napus</i> syl. qbsdam; Buniados qbsdam; Pseudobunium qbsdam (?) n. 1157: <i>Sinapi</i> syl.	(?) vol. XIII, c. 2r: <i>Napus satiuus</i> . <i>Bunias satiuus</i>	\
<i>Brassica nigra</i> (L.) W.D.J. Koch	n. 1156: <i>Sinapi</i> horten.	vol. II, c. 113r: <i>Sinapi tertium</i> Matth., <i>Sinapi sylvestre minus bursæ pastoris folio</i> Lobel. et Penæ	c. 194r, n. 536: Σίνηπι: <i>Sinapis: Senapa</i>
<i>Brassica oleracea</i> L.	n. 205: <i>Brassica</i>	vol. III, c. 60r: <i>Brassica sativa</i> , Κράμβη, <i>Coramble Columellæ</i> vol. III, c. 61r: <i>Brassica arborescens Pisana</i> vol. V, c. 84r: <i>Brassica selenites</i> vol. VIII, c. 35r: <i>Brassica marucina folijs cœruleis</i> , <i>Brassica Cumana</i> Dodon vol. XIV, c. 209r: <i>Brassica crispa Neapolitana</i> vol. XIV, c. 210r: <i>Brassica florida</i> , <i>Caulfiore uulgo</i> , <i>Brassica nigra Dodonæi uidetur</i> (?) vol. IX, c. 119r: <i>Brassica marucina</i> Theoph.	\
<i>Brassica rapa</i> L.	\	vol. V, c. 83r: <i>Brassica Constantinopolitana</i> , <i>Brassica sylvestris forte</i> , siue <i>Brassica tertium genus Fuchsij fortè</i> (?) vol. VI, c. 73r: <i>Brassicæ species</i>	\
<i>Brassica</i> sp.	\	vol. III, c. 324r: <i>Brassica selenites seu Apiana uel crispa</i> vol. IX, c. 135: <i>Brassica selenites seu Apiana uel crispa</i> vol. XV, c. 61r: <i>Brassica oris lacinosus ceu semicirculis</i> . <i>Brassica nigra</i> Dodon. uidetur (?) vol. I, c. 339: <i>Napus</i> . <i>Navone Bonon.</i> (?) vol. VI, c. 149r: <i>Lampsana</i> (?) vol. XIII, c. 87r: <i>Brassica canis quibusdam</i>	\
<i>Sinapis alba</i> L.	n. 446: <i>Erysimum aliud</i> n. 447: <i>Erysimum aliud</i>	vol. IV, c. 13r: <i>Lampsana alia</i> , <i>Lampsanæ Matthioli congener</i>	\

*Brassica oleracea* was the most abundant species (6 specimens in Erbario Aldrovandi, 1 specimen in Erbario ex Cibo B); *B. nigra* (Figure 2) was the sole species present in all the herbaria. *B. napus* was present only in Erbario ex Cibo B (in Erbario Aldrovandi its presence was doubtful) and *B. rapa* was present only in Erbario Aldrovandi (Figure 3). *Sinapis alba* was a marginal presence, with only 3 specimens, of which 3 were in Erbario ex Cibo B and 1 was in Erbario Aldrovandi (Figure 4).



**Figure 2.** Specimen of *Brassica nigra* W.D.J. Koch preserved in Erbario Aldrovandi, vol. II, c. 113r.; on the sheet, “Sinapi tertium Matth., Sinapi sylvestre minus bursa pastoris folio Lobel. et Penæ” is written. COPYRIGHT © Università di Bologna/Sistema Museale di Ateneo—Erbario e Orto Botanico.



**Figure 3.** Specimen of *Brassica rapa* L. preserved in Erbario Aldrovandi, vol. V, c. 83r.; on the sheet, “*Brassica Constantinopolitana*, *Brassica sylvestris forte*, siue *Brassica tertium genus Fuchsij forte*” is written. COPYRIGHT © Università di Bologna/Sistema Museale di Ateneo—Erbario e Orto Botanico.



**Figure 4.** Specimen of *Sinapis alba* L. preserved in Erbario Aldrovandi, vol. IV, c. 13r.; on the sheet, “Lampsana alia, Lampsanæ Matthioli congener” is written. COPYRIGHT © Università di Bologna/Sistema Museale di Ateneo—Erbario e Orto Botanico.

### 3. Discussion

Our archaeobotanical analyses of the seed and fruit morphology were internally consistent and suggestive of the presence of several taxa belonging to the Brassicaceae. Notably, the presence of *Sinapis alba* was found to be recognizable among the samples in which the external seed tegument was well preserved [15]. Perhaps the most interesting aspect of these data was the presence of several species of *Brassica*. The large quantity of seeds available for this genus [50] in the two contexts examined allowed the unequivocal separation of the samples into morphological groups associated with species descriptions. On this basis, the dominant species among our sites seems to have been *B. rapa* s.l., with representatives of *B. nigra* and *B. napus* also well represented. However, several studies have

reported extensive intraspecific variability in the key diagnostic features of seed-surface architecture, seed size, and seed shape for species belonging to this genus [51–54]. Despite this known variability, none of the widely used diagnostic keys attempt to estimate the frequency of erroneous diagnosis [15,50,55–57]. We therefore sought to support identifications based on seed morphology through the use of DNA sequencing as an independent mode of species diagnosis. DNA yields from ancient biological samples (aDNA) are typically low and highly degraded [58]. However, several groups have successfully used the DNA extracted from ancient plant material to confirm species identity using short amplicons of the core DNA barcodes [59,60] or else elected to target supplementary or non-coding barcode markers [61]. Such works typically use either large volumes of starting materials [62] or next-generation sequencing platforms [63]. Currently, we are unaware of any study using aDNA for the identification of individual *Brassica* seed samples. Here, we were not able to secure high-quality barcode sequences in either *rbcL* or *matK* by direct PCR, but we were able to do so using a modified form of nested PCR [64]. Several other works have reported similar success in recovering Sanger sequence data from materials containing low levels of template DNA, including DNA from animal feces [65], adulterated food [66], formalin-preserved specimens [67], and dried museum specimens [68].

In this study, we found that our ability to use aDNA-derived sequences to differentiate between members of *Brassica* varied considerably between amplicons, with the best results deriving from the *matK5* primer set. Reference to the seed morphology allowed us to discount all barcode-based diagnoses that fell outside the genus *Brassica*, most of which were relatively short sequence reads. It is perhaps notable that the finest level of taxonomic match was achieved after searches were performed using NCBI BLASTn searches. This may be at least partly attributable to the fact that the NCBI database contains a far higher proportion of data originating from next-generation sequencing than from Sanger sequencing, and the former is noted for its lower levels of technical errors [69]. Considering only the search results that were deemed reliable (i.e., those within *Brassica*) provided some support for the morphological identifications. Specifically, there was evidence of the significant presence of *B. nigra* in both sites, as well as of *B. oleracea*. The inability of the *matK5* sequences to distinguish between *B. napus* and one of its progenitor species, *B. rapa* [5], precluded the confirmation of the distributions of these individual species, but was nevertheless congruent with the overall inferences of the presence made from the morphological analyses.

Both sources of plant diagnosis suggested a significant presence of *B. nigra*. The efficacy of morphological diagnosis partly depends on the characteristics of the seeds of this species. In fact, in the genus *Brassica*, originally, dark-seeded species (e.g., *B. nigra* and *B. napus*) and yellow-seeded species (e.g., *B. rapa* and *B. juncea*) are present [70]: the first have significantly more lignin than the latter [71], especially in the inner epidermis of the seed-coat (testa) [72,73], perhaps also because the seeds of *B. nigra* must undergo a necessary dormancy period before germination [72]. This feature surely makes the seeds of *B. nigra* more resistant than others, and the careful choice of seeds made in view of the aDNA analyses probably caused a slight over-representation of this taxon.

The total number of specimens found in the Renaissance herbaria was not high if considered in the light of the economic importance of these species, and the presence of samples was limited to the three herbaria richest in *exsiccata* (Erbario Aldrovandi, Erbario ex Cibo B and Erbario Cesalpino). The *B. oleracea* was probably more easily available than the others due to its widespread cultivation as a vegetable; in fact, featured 7 specimens, plus one of uncertain attribution, comprising 1/3 of the total number of specimens found in the herbaria. In this regard, Mattioli [74] referred that various cabbage “species” exist, and Durante [75] noted that cabbages were cultivated and transplanted in all kitchen gardens and vineyards. By contrast, *B. napus* and *B. rapa* were only marginal presences among the herbarium samples, whereas *B. rapa* was the most abundant species among the archaeobotanical remains. It is worth noting that during the 16th century, *B. napus* was commonly known, as attested by Mattioli [74]; therefore, it was probably commonly



cultivated, and various “species” of it existed [75]; *B. rapa* was also extremely common in Italy, especially in the north [74,75]. *B. nigra*, another medicinal plant [76,77], was present in all three herbaria, even if with only one sample each; finally, *Sinapis alba* also had few records, in two herbaria only, despite its recognition as the common quality of mustard, cultivated in the kitchen gardens [74,78].

#### *Ethnobotanical Considerations in the Possible Uses of Brassica and Sinapis Seeds*

In the two pits, the significant abundance of seeds of the *Brassica* sp.pl. and *Sinapis alba* makes it possible to hypothesize a specific use of these taxa: we observed two contexts that evidently collected waste from food preparation [24,79].

It is known that, during the Middle Ages, various species of *Brassica* were cultivated in Europe to obtain oil [80,81]. During this period, in fact, for economic, cultural, and religious reasons, the use of “minor” vegetable oils in food preparation became quite widespread and nearly dominant in several territories, principally in those that were (at least partially) outside the range of *Olea europaea* L. [82]. In particular, the oil of rapeseed (*B. rapa/campestris* var. *oleifera*), was used up to the 20th century, particularly in northern Italy [83], where the taxon was commonly cultivated, even in the mid-1500s [74,75]. On the other hand, the oil of swede (*B. napus*) was frequently used as a condiment, as a fuel for oil lamps, to make soap, and in wool crafts [75]. Thus, the numerous seeds of *B. rapa* s.l. and *B. napus* found in the archaeological contexts of Ferrara and Lugo probably represent the waste of gentle squeezing (since not many fragments are present) to obtain oil. It should be noted that they were also used as components in complex pharmaceutical preparations, such as the *theriaca*: the seeds of *B. napus* and *B. rapa* were regarded as excellent counterpoisons and, therefore, inserted in the composition of numerous antidotes [74].

On the other hand, various seeds of the genera *Brassica* and *Sinapis* are used as spices and ingredients in sauces, in particularly *B. nigra*, *B. juncea*, and *S. alba* [84,85]. In the mid-15th century Michele Savonarola, ancestor of the more famous Girolamo, as a physician of Duke Borso d’Este in Ferrara, wrote a dietetics treaty, listing and commenting on the foods that were more or less commonly present on the tables of that epoch [86]. Among various features, Savonarola notes that in Ferrara, “ogni contrada” (every neighborhood) had two or three sales counters for “senava” (mustard), which was consequently widely used in kitchens. Here, the term “senava” much probably identifies the mostarda, which in its current form was likely codified in the Middle Ages but was subsequently differentiated in diverse regional recipes [87,88]. Mostarda can be a sauce made of crushed mustard seeds only, or a very rich and complex product, with the addition of fruits (grapes or their derivatives, figs, apples, pears, quinces, blackberries, walnuts etc.) and various spices in seeds (anise, coriander, fennel, pepper etc. [88]). It is interesting to observe that nearly all these potential ingredients were found among the botanical remains of the two pits [38,79]. Mustard is considered as one of the “universally” widespread elements of the cuisine of the late Western Middle Ages [89,90]; the contemporaneous presence of *B. nigra* and *S. alba* in both in Ferrara and Lugo suggests that this product could also have been produced in both contexts.

## 4. Materials and Methods

### 4.1. Archaeological Context

The seeds considered in this study come from two sites in Ferrara and Lugo (Emilia-Romagna—Figure 1a) with two particular contexts, described below.

(I) Ferrara—Corso Porta Reno/via Vaspergolo (Figure 1b). In a key position of the medieval city, an excavation (about 300 m<sup>2</sup>) was carried out in 1993–1994, which exposed a stratification of the city of early medieval foundation [91]. The chronological range of the archaeobotanical material analysed was from the 10th to the 15th century AD; at the beginning, it was a zone of peri-urban kitchen gardens with wooden structures, which subsequently became part of the historical city centre with brick houses [36,37]. The

excavation context that produced the greatest number of seeds of *Brassica/Sinapis* was a brickwork pit (3.5 × 1.5 × 1.4 m—Figure 1d) for domestic waste, collocated under the floor of a house and used for a few years in the middle of the 15th century. Quality and typology of the artifacts found within this tank indicate that the dump was used by an upper/middle-class family [92,93]. The pit was probably a place to discharge food-preparation waste [38,39,79].

(II) Lugo (Ravenna)—Piazza Baracca/via Magnapassi (Figure 1c). The urban area, in the center of the town, excavated in 2009, revealed a zone with productive activities dating to between 14th and 16th century. The area featured numerous wells, which were later reused to dispose of waste, and a brickwork pit (3.7 × 2.0 × 1.9 m—Figure 1e), analogous to the pit of Ferrara, whose filling dated from the 15th–16th century (this information was provided by Chiara Guarnieri—Soprintendenza Archeologia, Belle Arti e Paesaggio Bologna-Modena-Reggio Emilia-Ferrara). A significant number of *Brassica/Sinapis* seeds were also found in this context (still unpublished).

#### 4.2. Archaeobotanical Analysis

Archaeobotanical analyses were performed in the Laboratory of Palynology and Palaeobotany of the University of Modena and Reggio Emilia.

Seed identification was based on keys for the Brassicaceae (Cruciferae) and, in particular, for genera *Brassica* and *Sinapis* [15,50,55–57].

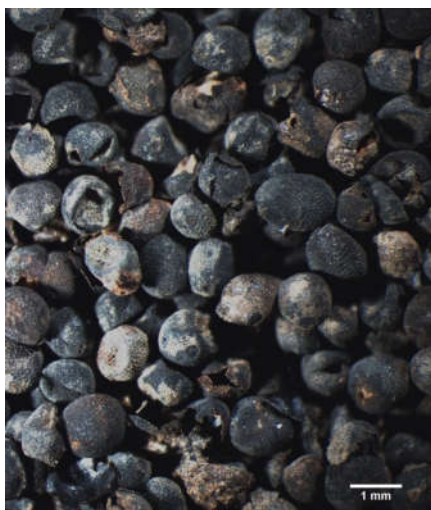
Identification keys for the seeds of these two genera, defined as “globose, spherical or irregular in shape” [15], take into account the structure (although scar, chalaza, and the grooves of the radicle ridge do not have significant diagnostic value [50]), the shape, and the size. However, the most discriminant features are the type of reticulation, the size of the interspace, and the character of the stippling, which can be observed overall in the middle part of the seed (on the seed coat; for further details, see Table 5). For the seeds of the genus *Brassica*, “while it is not possible in all cases to identify an individual seed with certainty, it is usually possible to make a fairly reliable separation of a mixture of species” [50].

**Table 5.** Diagnostic characters used to distinguish the five principal species found during this study. Only minimum and maximum values of seed size are given.

Taxon	Species Identification Level (in This Work)	Seed Size (mm)			Reticulum Features		
		Length	Width	Thickness	Ribs	Meshes (µm)	Mesh Shape
<i>Brassica juncea</i>	cfr.	1.3–2.3	1.3–2	1.2–1.8	high and distinct/conspicuous; rarely less so	100–220	elliptic
<i>Brassica napus</i>	cfr.	1.1–2.6	1.3–2.3	1.1–2.3	low and indistinct	70–150	angular–elongated
<i>Brassica nigra</i>	id.	1.1–2.1	1.1–2	0.7–1.8	high and striking; rarely less so	50–150	mostly square
<i>Brassica oleracea</i>	cfr.	1.3–2.7	1.3–2.8	1.1–2.4	low and indistinct	50–100	angular–oblong
<i>Brassica rapa</i>	s.l.	1.2–2.2	1.1–2.2	0.9–1.8	high and distinct; rarely less so	100–150 (220)	oblong–angular
<i>Sinapis alba</i>	id.	1.8–3.1	1.8–2.8	1.5–2.4	low and indistinct	30–100	\

From Dickson, C.A. *Brassica* seeds characters for Archaeobotany Workgroup, Glasgow. Z. Hazzell/English Heritage and Dickson J.H. Eds., 2011, modified with Berggren [15,56].

Observations were made with a stereomicroscope (Figure 5) with up to 80 magnifications. Nomenclature was updated following [10,49].



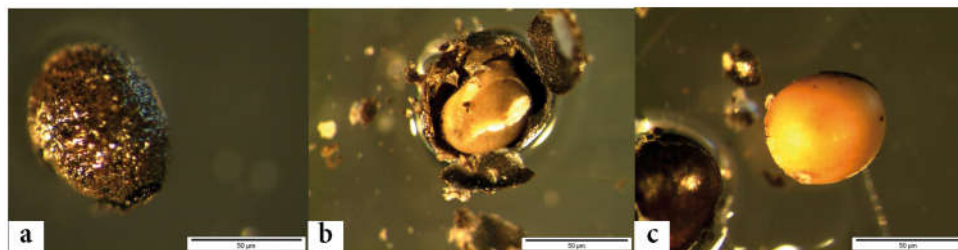
**Figure 5.** *Brassica* sp.pl. seeds from context I (Ferrara—no. 16c). Photograph: L. Dal Fiume.

#### 4.3. Ancient DNA Analysis

The overall strategy for the molecular characterization of ancient seed samples was to use established chloroplast barcode markers, supplemented where necessary with chloroplast Simple Sequence Repeat (SSR) markers that were initially screened against a worldwide *Brassica* reference panel.

##### 4.3.1. Plant Materials and DNA Extraction

Archaeological seeds with a *Brassica*-type phenotype were transported to Aberystwyth, UK, for subsequent DNA extraction. Here, the following precautions were taken to minimize the probability of exogenous contamination during the extraction process. First, the seeds were not handled directly and were moved to an isolated microbiology laboratory (no previous history of plant molecular biology) for DNA extraction. Once there, seeds were initially exposed to UV light (20 min) to break and immobilize any contaminant DNA on the seed surface. Seeds were then immobilized on a sterile glass slide using nail varnish and air-dried under positive pressure. Central tissues (endosperm and embryo tissues) were then carefully removed from the seeds under sterile conditions using a dissecting microscope, and the testa (seed coats) discarded (Figure 6). The isolated internal tissues were transferred into a sterile tube containing DNeasy lysis buffer (400  $\mu$ L) and RNase (20  $\mu$ L) (both Qiagen, UK) and mechanically disrupted, and DNA was extracted according to the manufacturer's instructions, except for the use of 100  $\mu$ L elution buffer (rather than 50  $\mu$ L).



**Figure 6.** Removal of *Brassica* seed integument: (a) seed with integer integument, (b) seed with cracked integument, (c) seed without integument. Photographs: S. De Felice.

#### 4.3.2. Primer Selection

The two universal barcode loci for plants (*rbcL* and *matK* [94]) were targeted as sites to enable species identification. For the archaeological seed samples, given the expectation of extensive degradation, a wide range of forward and reverse primers were screened to generate amplicons covering at least part of the barcoding locus (Supplementary Information, Table S2). All primers were designed using reference sequence from the BOLD database downloaded onto the Geneious software.

#### 4.3.3. Polymerase Chain Reaction of Barcoding Loci

The reaction mixture (20 µL) for each aDNA sample comprised: 1–20 ng template DNA (2–4 µL); BioMix buffer (10 µL, Bioline UK); 1 µL forward primer (1 µM), 1 µL reverse primer (1 µM); 4–6 µL nanopure water. For conventional PCR, samples were subjected to a slight variant of the following thermocycling conditions (depending on  $T_m$  values of the primers used): 94 °C (2 min), followed by 40 cycles of 94 °C (30 s), 52 °C (40 s), and 72 °C (40 s), followed in turn by a final extension at 72 °C for 10 min. For problematic materials, we used MT-PCR; a modified form of nested PCR originally described by [64] and modified by [95] was applied to problematic materials. Here, the reaction mixture (10 µL) for the preamplification comprised: 1–20 ng template DNA (1–3 µL); SensiMix buffer (5 µL, Bioline UK); 1 µL forward primer (1 µM); 1 µL reverse primer (1 µM); and 0–2 µL nanopure water. Preamplification used a slight variant of the following thermocycling conditions (depending on  $T_m$  values of the primers used): 94 °C (5 min), followed by 15 cycles of 94 °C (30 s), 52 °C (40 s), and 72 °C (40 s), followed in turn by a final extension at 72 °C for 5 min. The amplification products were first diluted 1:10 in nanopure water and then aliquoted into the following reaction mix (25 µL): SensiMix buffer (5 µL, Bioline UK); 1 µL forward primer (1 µM); 1 µL reverse primer (1 µM); and 0–2 µL nanopure water. For the selective amplification: diluted pre-amplification products (5 µL); SensiMix buffer (12.5 µL, Bioline UK); 2.5 µL of forward primer (2 µM) and reverse primer (2 µM) mix; and 5 µL nanopure water. The samples were then subjected to a minor variant of the following thermocycling regime (depending on  $T_m$  values of the primers used): 95 °C (5 min), followed by 40 cycles of 94 °C (30 s), 54 °C (40 s), and 72 °C (40 s), followed in turn by a final extension at 72 °C for 5 min.

#### 4.3.4. DNA Sequencing

Amplification products were submitted for sequence analysis to MacroGen (<http://www.macrogen.com>, accessed on 20 June 2012). Here, cycle-sequencing reactions were carried out according to [96]. Manual editing of raw traces and subsequent alignments of forward and reverse sequences enabled us to assign edited sequence for most species. The 3' and 5' termini were clipped to generate consensus sequences for each taxon. Nucleotide sequences were then translated into amino-acid sequence using ExPASy (<http://www.expasy.ch/tools/dna.html>, accessed on 28 November 2021).

#### 4.3.5. Sequence Analysis and Verification

Consensus sequences were produced for each taxon at each locus by alignment of the forward and reverse sequences using ClustalW (<http://www.ebi.ac.uk/clustalw/>, accessed on 1 December 2021). All sequences were searched on BLASTn (<http://www.ncbi.nlm.nih.gov/BLAST/>, accessed on 5 December 2021) or the BOLD Systems V4 database (<https://www.boldsystems.org/>, accessed on 5 January 2022, last visited 1 February 2022) to verify taxon (or close taxonomic group) and locus.

Following the method described here, aDNA of 242 *Brassica* seeds was analysed (Table 6): 161 from Ferrara (context I) and 81 from Lugo (context II).

**Table 6.** Summary of *Brassica*-type seed samples used for the aDNA analysis.

I (no. 16c)—Ferrara—Corso Porta Reno/via Vaspergolo	Layer	No. of seeds analysed	No. of seeds aDNA able	Chronology (century)
Analysed 161 seeds— aDNA results: 41 (25%)	1080	69	15	Mid-14th–end 15th AD
	1082	72	22	
	1095	20	4	
II (no. 15)—Lugo (RA)—Piazza Baracca	layer	no. of seeds analysed	no. of seeds aDNA able	chronology (century)
Analysed 83 seeds— aDNA results: 24 (29%)	557	4	1	15th–16th AD
	593-1	8	3	
	593-2	6	4	
	593-3	62	14	
	593-4	3	2	

#### 4.4. Research in Italian Renaissance Herbaria

To compare the results of the archaeobotanical analyses with other contemporary sources, we decided to search samples of species attributable to the two genera under examination in the Italian Renaissance herbaria, the oldest in Europe (16th century—[97]); the information contained in these collections is vital to address questions related to the species or varieties cultivated and used during this epoch, especially if these data are integrated in a combined approach involving various disciplines, as already demonstrated in previous studies [98–103].

We searched *exsiccata* identified as *Brassica* or *Sinapis* species in all the Renaissance Italian herbaria (from mid-to-late 16th century): Erbario Anonimo Toscano (formerly Erbario Merini), Erbario ex Cibo B, Erbario Aldrovandi, Erbario *En Tibi*, Erbario Cesalpino, Erbario Estense. Since all of them had been extensively studied [41–46,48,104–110] and reliable identifications are available for nearly all the specimens, the search for samples of *Brassica* and *Sinapis* species was performed through the studies above mentioned.

## 5. Conclusions

The multiproxy approach in this research was proven to be of interest. The two waste pits of Ferrara and Lugo offered a notable and unusual quantity of seeds of *Brassica* sp.pl. and *Sinapis alba*. Thus, in this case, optimal conditions were available in which to perform the traditional morphometric analyses on the seeds in the most effective way possible, showing non-negligible species diversity within the genus *Brassica* in both contexts.

In addition, despite the aforementioned limitations, the availability of such a large volume of remains made it possible to attempt research on the aDNA for a taxon normally not studied in this sense (in contrast to the frequency with which other important economic plant species, such as *Vitis vinifera* L. or cereals, are studied [111–113]). Results were obtained that could form the basis for new and more in-depth investigations in this field.

Our research on the ancient herbaria (which are datable to an epoch slightly later than the contexts studied) and other historical sources of the Middle Ages/Renaissance period allowed to understand how these species were frequent and widespread among the cultivated food plants. Furthermore, the seeds of these species were used to obtain oil and other seasonings, which, from the medieval period onwards, became typical elements of all European cooking.

**Supplementary Materials:** The following supporting information can be downloaded at: [www.mdpi.com/article/10.3390/plants11162100/s1](http://www.mdpi.com/article/10.3390/plants11162100/s1). Table S1: Taxonomic diagnosis using *matK1*, *1a*, *1b*, *1c*, *4*. Best match results recovered on BOLD Systems v4 and NCBI databases using amplicon sequences of *matK1*, *1a*, *1b*, *1c*, *4* recovered from the study sites. The percentage sequence identity and similarity score shown, along with whether probability of a match was lower than  $10^{-5}$ . The species sharing the highest number of hits are provided, along with the lowest level of taxonomic diagnosis possible based on aDNA (given that all seeds possessed Brassicaceae-type seed morphology). Table S2: Sequences of barcode primers used to amplify material in this study. Target sequence from *Brassica napus* L. strain ZY036 chloroplast complete genome (Genbank: GQ861354).

**Author Contributions:** G.B.: conceptualisation, archaeobotanical analyses, ethnobotanical research, draft writing, and critical reading; S.D.F.: aDNA work, some data analysis, and draft writing; M.J.W.: co-ordination of aDNA work, data analysis, contribution to writing and critical reading; J.A.: amendment of the work pipeline, assistance with aDNA work, and editing of draft manuscript; L.A.: ethnobotanical research and critical reading; J.N. and F.B.: research on ancient herbarium samples, draft writing and critical reading. All authors have read and agreed to the published version of the manuscript.

**Funding:** This research was funded by the University of Aberystwyth (part of aDNA analysis).

**Institutional Review Board Statement:** Not applicable.

**Informed Consent Statement:** Not applicable.

**Data Availability Statement:** The Renaissance herbaria cited in the text are preserved in the herbaria of the universities of Florence (Erbario Anonimo Toscano, Erbario Cesalpino) and Bologna (Erbario Aldrovandi), in the Biblioteca Angelica of Rome (Erbario ex Cibo B), in the Naturalis Biodiversity Centre, Leiden (Erbario *En Tibi*), and in Modena State Archives (Erbario Estense).

**Acknowledgments:** We thank Marta Mazzanti and Lara Dal Fiume for their contribution to the archaeobotanical analyses and Chiara Guarnieri for archaeological data.

**Conflicts of Interest:** The authors declare no conflict of interest. The funders had no role in the design of the study; in the collection, analyses, or interpretation of data; in the writing of the manuscript; or in the decision to publish the results.

## References

- Al-Shehbaz, I.A.; Beilstein, M.A.; Kellogg, E.A. Systematics and phylogeny of the *Brassicaceae* (*Cruciferae*): An overview. *Plant Syst. Evol.* **2006**, *259*, 89–120. <https://doi.org/10.1007/s00606-006-0415-z>.
- Bailey, C.D.; Koch, M.A.; Mayer, M.; Mummenhoff, K.; O’Kane, S.L., Jr.; Warwick, S.I.; Windham, M.D.; Al-Shehbaz, I.A. Toward a global phylogeny of the *Brassicaceae*. *Mol. Biol. Evol.* **2006**, *23*, 2142–2160. <https://doi.org/10.1093/molbev/msl087>.
- Velasco, P.; Rodríguez, V.M.; Francisco, M.; Cartea, M.E.; Soengas, P. Genetics and Breeding of *Brassica* Crops. In *Glucosinolates. Reference Series in Phytochemistry*; Mérillon, J.M., Ramawat, K., Eds.; Springer: Cham, Switzerland, 2017; pp. 61–86.
- Salehi, B.; Quispe, C.; Butnariu, M.; Sarac, I.; Marmouzi, I.; Kamle, M.; Tripathi, V.; Kumar, P.; Bouyahya, A.; Capanoglu, E.; et al. Phytotherapy and food applications from *Brassica* genus. *Phytother. Res.* **2021**, *35*, 3590–3609. <https://doi.org/10.1002/ptr.7048>.
- Nagaharu, U. Genome analysis in *Brassica* with special reference to the experimental formation of *B. napus* and peculiar mode of fertilization. *Japan. J. Bot.* **1935**, *7*, 389–452.
- Qiao, J.; Zhang, X.; Chen, B.; Huang, F.; Xu, K.; Huang, Q.; Huang, Y.; Hu, Q.; Wu, X. Comparison of the cytoplasmic genomes by resequencing: Insights into the genetic diversity and the phylogeny of the agriculturally important genus *Brassica*. *BMC Genomics* **2020**, *21*, 480. <https://doi.org/10.1186/s12864-020-06889-0>.
- Mikić, A. Reminiscences of the cultivated plants early days as treasured by ancient religious traditions: The mustard crop (*Brassica* spp. and *Sinapis* spp.) in earliest Christian and Islamic texts. *Genet. Resour. Crop Evol.* **2016**, *63*, 1–6. <https://doi.org/10.1007/s10722-015-0321-8>.
- Guo, Y.; Chen, S.; Li, Z.; Cowling, W.A. Center of origin and centers of diversity in an ancient crop, *Brassica rapa* (turnip rape). *J. Hered.* **2014**, *105*, 555–565. <https://doi.org/10.1093/jhered/esu021>.
- Zohary, D.; Hopf, M.; Weiss, E. *Domestication of Plants in the Old World*, 4th ed.; Oxford University Press: Oxford, UK, 2012.
- Pignatti, S.; Guarino, R.; La Rosa, M. *Flora d’Italia*, II ed.; Edagricole di New Business Media: Bologna, Italy, 2017–2019.
- Cappers, R.T.J.; Bekker, R.M. *A Manual for the Identification of Plant Seeds and Fruits*; Barkhuis & University of Groningen Library: Groningen, The Netherlands, 2013.
- Christenhusz, M.J.M.; Fay, M.F.; Chase, M.W. *Plants of the World*; Kew Publishing: Kew, UK; The University of Chicago Press: Chicago, MI, USA, 2017.
- Spjut, R.W. *A Systematic Treatment of Fruit Types*; New York Botanical Garden: New York, NY, USA, 1994; Volume 70, pp. 1–182.
- Knörzer, K.H. *Geschichte der Synanthropen Flora im Niederrheingebiet*; Verlag Philipp von Zabern: Mainz am Rhein, Germany, 2007.
- Berggren, G. *Atlas of Seeds. Part 3: Salicaceae-Cruciferae*; Swedish Museum of Natural History: Stockholm, Sweden, 1981.
- Mercuri, A.M.; Allevato, E.; Arobba, D.; Bandini Mazzanti, M.; Bosi, G.; Caramiello, R.; Castiglioni, E.; Carra, M.L.; Celant, A.; Costantini, L.; et al. Pollen and macroremains from Holocene archaeological sites: A dataset for the understanding of the bio-cultural diversity of the Italian landscape. *Rev. Palaeobot. Palynol.* **2015**, *218*, 250–266. <https://doi.org/10.1016/j.revpalbo.2014.05.010>.
- Brain Plants. Available online: <http://brainplants.successoterra.net/index.html> (accessed on 13 June 2022).

18. Rottoli, M.; Castiglioni, E. Prehistory of plant growing and collecting in Northern Italy, based on seed remains from the early Neolithic to the Chalcolithic (c. 5600–2100 cal. BC). *Veg. Hist. Archaeobot.* **2009**, *18*, 91–103. <https://doi.org/10.1007/s00334-007-0139-1>.
19. Rottoli, M.; Fanetti, D.; Bosi, G.; Castiglioni, E. The Agriculture in Northern Italy during the Iron Age: A review. In Proceedings of the 17th Conference of International Work Group for Palaeoethnobotany, Muséum National d’Histoire Naturelle, Jardin des Plantes, Paris, France, 4–9 July 2016; pp. 66–67.
20. Bosi, G.; Bandini Mazzanti, M.; Montecchi, M.C.; Torri, P.; Rinaldi, R. The life of a Roman colony in Northern Italy: Ethnobotanical information from archaeobotanical analysis. *Quat. Int.* **2017**, *460*, 135–156. <https://doi.org/10.1016/j.quaint.2016.08.008>.
21. Bosi, G.; Castiglioni, E.; Rinaldi, R.; Mazzanti, M.; Marchesini, M.; Rottoli, M. Archaeobotanical evidence of food plants in Northern Italy during the Roman period. *Veg. Hist. Archaeobot.* **2020**, *29*, 681–697. <https://doi.org/10.1007/s00334-020-00772-4>
22. Bosi, G.; Rottoli, M.; Castiglioni, E.; Bandini Mazzanti, M. Archaeobotanical evidences of food plants in northern Italy during the Medieval and Renaissance periods. In Proceedings of the 17th Conference of International Work Group for Palaeoethnobotany, Muséum National d’Histoire Naturelle, Jardin des Plantes, Paris, France, 4–9 July 2016; pp. 47–48.
23. Mercuri, A.M.; Bigi, P.; Bottazzi, G.; Accorsi, C.A.; Bandini Mazzanti, M.; Bosi, G.; Marchesini, M.; Montecchi, M.C.; Pedini, D. From the “Treasure of Domagnano” to the Archaeobotany of a Roman and Gothic settlement in the Republic of San Marino. In *Plants and Culture: Seeds of the Cultural Heritage of Europe*; Morel, J.P., Mercuri, A.M., Eds.; EdiPuglia: Bari, Italy, 2009; pp. 69–91.
24. Parmigiani, E. Prime indagini sui semi e frutti dello scavo archeologico di Lugo—Piazza Baracca (RA) di età rinascimentale. Bachelor Thesis, Università degli Studi di Modena e Reggio Emilia, Modena, Italy, 2006.
25. Bandini Mazzanti, M.; Marchesini, M.; Marvelli, S.; Bosi, G.; Mercuri, A.M.; Accorsi, C.A. Semi e frutti del pozzo di Cognento (Modena) dal periodo tardo Romano all’Età Moderna. In *Archeologia dell’Emilia-Romagna 1999/III*; Marini Calvani, M., Ed.; All’Insegna del Giglio: Firenze, Italy, 2001; pp. 207–228.
26. Cascitti, M.E. I materiali carpologici dallo scavo di Corso Duomo (Modena—VII–XI Secolo d.C.): Nuove analisi e sintesi dei dati ottenuti. Bachelor Thesis, Università degli Studi di Modena e Reggio Emilia, Modena, Italy, 2017.
27. Bosi, G.; Marchesini, M.; Marvelli, S.; Bandini Mazzanti, M. L’alimentazione e l’ambiente vegetale ricostruiti attraverso le analisi carpologiche. In *Un villaggio nella pianura. Ricerche archeologiche in un insediamento medievale nel territorio di Sant’Agata Bolognese*; Gelichi, S., Librenti, M., Marchesini, M., Eds.; All’Insegna del Giglio: Firenze, Italy, 2014; pp. 308–323.
28. Osti, G. L’ambiente urbano di Modena medievale (IX–XIII sec. d.C.) attraverso i reperti carpologici. Master’s Thesis, Università degli Studi di Ferrara, Ferrara, Italy, 2014.
29. Bosi, G.; Bandini Mazzanti, M.; Florenzano, A.; Massamba N’Siala, I.; Pederzoli, A.; Rinaldi, R.; Torri, P.; Mercuri, A.M. Seeds/fruits, pollen and parasite remains as evidence of site function: Piazza Garibaldi—Parma (N Italy) in Roman and Medieval times. *J. Archaeol. Sci.* **2011**, *38*, 1621–163. <https://doi.org/10.1016/j.jas.2011.02.027>.
30. Montecchi, M.C.; Bosi, G.; Rinaldi, R.; Torri, P.; Bandini Mazzanti, M. L’ambiente vegetale al Novi Sad dal IV sec. a.C. al XII sec. d.C. In *Parco Novi Sad di Modena: dallo scavo al parco archeologico*; Labate, D., Malnati, L., Eds.; All’Insegna del Giglio: Firenze, Italy, 2017; pp. 196–206.
31. Benatti, A.; Bosi, G.; Rinaldi, R.; Labate, D.; Benassi, F.; Santini, C.; Bandini Mazzanti, M. Testimonianze archeocarpologiche dallo spazio verde del Palazzo Vescovile di Modena (XII sec. d.C.) e confronto con la flora modenese attuale. *Atti Soc. Nat. Mat. Modena* **2011**, *142*, 201–215.
32. Bosi, G.; Bandini Mazzanti, M. Analisi carpologiche di saggio nel sito dell’ex Monte di Pietà nel Centro Storico di Forlì. In *Il monte prima del monte. Archeologia e storia di un quartiere medievale di Forlì*; Guarnieri, C., Ed.; AnteQuem: Bologna, Italy, 2009; pp. 213–219.
33. Bandini Mazzanti, M.; Mercuri, A.M.; Trevisan Grandi, G.; Barbi, M.; Accorsi, C.A. Il fossato di Argenta (Ferrara) e la sua bonifica in età medievale: contributo alla ricostruzione della storia del sito in base ai semi e frutti del riempimento. In *Il Tardo Medioevo ad Argenta: lo scavo di via Vinarola-Aleotti*; Guarnieri, C., Ed.; All’Insegna del Giglio: Firenze, Italy, 1999; pp. 219–237.
34. Mercuri, A.M.; Trevisan Grandi, G.; Bandini Mazzanti, M.; Barbi, M.; Accorsi, C.A. I semi/frutti della latrina del Monastero di S. Caterina. In *Il Tardo Medioevo ad Argenta: lo scavo di via Vinarola-Aleotti*; Guarnieri, C., Ed.; All’Insegna del Giglio: Firenze, Italy, 1999; pp. 238–245.
35. Ronchei, M. Semi e frutti basso-medievali dallo scavo di Piazza Matteotti (Imola—BO). Bachelor Thesis, Università degli Studi di Modena e Reggio Emilia, Modena, Italy, December 2007.
36. Bosi, G. Flora e ambiente vegetale a Ferrara tra il X e il XV Secolo attraverso i reperti carpologici dello scavo di Corso Porta Reno—via Vaspergolo nell’attuale centro storico. Ph.D. Thesis, Università degli Studi di Firenze, Firenze, Italy, 2000.
37. Cuoghi, E. L’orto alto-medievale di Ferrara: basi carpologiche per la sua ricostruzione. Bachelor Thesis, Università degli Studi di Modena e Reggio Emilia, Modena, Italy, 2007.
38. Dal Fiume, L. Informazioni etnobotaniche e ambientali da Ferrara (XIV–XV sec. d.C.): studio dei reperti carpologici di vasche per lo smaltimento dei rifiuti. Master’s Thesis, Università degli Studi di Ferrara, Ferrara, Italy, 2014.
39. Bosi, G.; Dal Fiume, L.; Bandini Mazzanti, M. Analisi archeobotaniche nella “Vasca dello Specchio” (USM 594). In *Medioevo scartato. Il “pozzo” e la vasca di scarico di via Vaspergolo—Corso Porta Reno a Ferrara e la produzione dei boccali-bicchieri in maiolica arcaica*; Guarnieri, C., Ed.; Società dei Naturalisti e Matematici di Modena, Modena, Italy, 2015; in press.
40. Jonsell, B. *Flora of Tropical East Africa. Cruciferae*; A.A. Balkema: Rotterdam, The Netherlands, 1982; pp. 1–73.
41. Soldano, A. L’erbario di Ulisse Aldrovandi—Volumi III e IV. *Atti Ist. Ven. Sci. Lett. Arti Cl. Sci. Fis. Mat. Nat.* **2001**, *159*, 1–215.
42. Soldano, A. L’erbario di Ulisse Aldrovandi—Volumi V–VI–VII. *Atti Ist. Ven. Sci. Lett. Arti Cl. Sci. Fis. Mat. Nat.* **2002**, *160*, 1–248.

43. Soldano, A. L'erbario di Ulisse Aldrovandi—Volumi VIII–IX–X–XI. *Atti Ist. Ven. Sci. Lett. Arti Cl. Sci. Fis. Mat. Nat.* **2003**, *161*, 1–241.
44. Soldano, A. L'erbario di Ulisse Aldrovandi—Volumi XII–XIII–XIV. *Atti Ist. Ven. Sci. Lett. Arti Cl. Sci. Fis. Mat. Nat.* **2004**, *162*, 1–248.
45. Soldano, A. L'erbario di Ulisse Aldrovandi—Volume XV e considerazioni sull'intera collezione. *Atti Ist. Ven. Sci. Lett. Arti Cl. Sci. Fis. Mat. Nat.* **2005**, *163*, 1–171.
46. Chiovenda, E. Francesco Petrollini, botanico del secolo XVI. *Ann. Bot.* **1909**, *7*, 339–447.
47. Mangani, G.; Tongiorgi Tomasi, L. *Gherardo Cibo, dilettante di botanica e pittore di "paesi"*. *Arte, scienza e illustrazione botanica nel XVI secolo*; Il Lavoro Editoriale: Ancona, Italy, 2013.
48. Caruel, T. *Illustratio in hortum siccum Andreae Cæsalpini*; Typis Le Monnier: Florentiæ, Italy, 1858.
49. POWO. The Plants of the World online. Available online: <http://www.plantsoftheworldonline.org/> (accessed on 18 June 2022).
50. Musil, A.F. *Distinguishing the Species of Brassica by Their Seed*; Miscellaneous Publication no. 643; United States Department of Agriculture: Washington, DC, USA, 1948.
51. Koul, K.K.; Nagpal, R.; Raina, S.N. Seed coat microsculpturing in *Brassica* and allied genera (subtribes *Brassinae*, *Raphininae*, *Moricandiinae*). *Ann. Bot.* **2000**, *86*, 385–397. <https://doi.org/10.1006/anbo.2000.1197>
52. Zeng, C.-L.; Wang, J.-B.; Liu, A.-H.; Wu, X.-M. Seed coat microsculpturing changes during seed development in diploid and amphidiploid *Brassica* species. *Ann. Bot.* **2004**, *93*, 555–566. <https://doi.org/10.1093/aob/mch080>
53. Li, N.; Song, O.J.; Peng, W.; Zhan, J.P.; Shi, J.Q.; Wang, X.F.; Liu, G.H.; Wang, H.Z. Maternal control of seed weight in rapeseed (*Brassica napus* L.): The causal link between the size of pod (mother source) and seed (offspring, sink). *Plant Biotechnol. J.* **2019**, *17*, 736–749. <https://doi.org/10.1111/pbi.13011>
54. Hassan, W.; Abdelhameed, A.; Al Shaye, N.A.; Amer, W. Taxonomic significance of seed sculpture and pollen ecto-mycoflora at the infraspecific level: *Brassica tournefortii* case study. *Saudi J. Biol. Sci.* **2021**, *28*, 5998–6008. <https://doi.org/10.1016/j.sjbs.2021.06.049>
55. Berggren, G. *Seed Characters of Certain Cultivated and Wild Growing Brassica and Sinapis Species and Key for Determination of These Species*; Frökontrollanstaltens meddelande: Stockholm, Sweden, 1960; Volume 35.
56. Berggren, G. Reviews on the taxonomy of some species of the genus *Brassica* based on their seeds. *Svensk. Bot. Tidskr.* **1962**, *56*, 65–135.
57. Dawson, S. Visual Identification of Seeds of Five Species of *Brassica* and One Species of *Sinapis*. Available online: [https://seedanalysts.ca/assets/csaa\\_files/pdf/members\\_only/training/purity/oilseeds/VISUAL%20IDENTIFICATION%20OF%20SEEDS%20OF%20BRASSICA%20AND%20SINAPIS%20ARVENSIS.pdf](https://seedanalysts.ca/assets/csaa_files/pdf/members_only/training/purity/oilseeds/VISUAL%20IDENTIFICATION%20OF%20SEEDS%20OF%20BRASSICA%20AND%20SINAPIS%20ARVENSIS.pdf) (accessed on 10 July 2022).
58. Mitchell, D.; Willerslev, E.; Hansen, A. Damage and repair of ancient DNA. *Mutat. Res.-Fundam. Mol. Mech. Mutagen.* **2005**, *571*, 265–276. <https://doi.org/10.1016/j.mrfmmm.2004.06.060>
59. Gismondi, A.; Rolfo, M.F.; Leonardi, D.; Rickards, O.; Canini, A. Identification of ancient *Olea europea* L. and *Cornus mas* L. seeds by DNA barcoding. *C. R. Biol.* **2012**, *335*, 472–479. <https://doi.org/10.1016/j.crv.2012.05.004>
60. Fornaciari, R.; Fornaciari, S.; Francia, E.; Mercuri, A.M.; Arru, L. *Panicum* spikelets from the early Holocene Takakori rockshelter (SW Libya): Archeo-molecular and botanical investigations. *Plant Biosyst.* **2018**, *152*, 1–13. <https://doi.org/10.1080/11263504.2016.1244117>
61. Pedersen, M.W.; Ginolhac, A.; Orlando, L.; Olsen, J.; Andersen, K.; Holm, J.; Funder, S.; Willerslev, E.; Kjaer, K.H. A comparative study of ancient environmental DNA to pollen and macrofossils from lake sediments reveals taxonomic overlap and additional plant taxa. *Quat. Sci. Rev.* **2013**, *75*, 161–168. <https://doi.org/10.1016/j.quascirev.2013.06.006>
62. Parducci, L.; Bennett, K.D.; Ficotola, G.F.; Alsos, I.G.; Suyama, Y.; Wood, J.R.; Pedersen, M.W. Ancient plant DNA in lake sediments. *New Phytol.* **2017**, *214*, 924–942. <https://doi.org/10.1111/nph.14470>
63. Weiss, C.L.; Schuenemann, V.J.; Devos, J.; Shirsekar, G.; Reiter, E.; Gould, B.A.; Stinchcombe, J.R.; Krause, J.; Burbano, H.A. Temporal patterns of damage and decay kinetics of DNA retrieved from plant herbarium specimens. *R. Soc. Open Sci.* **2016**, *3*, 160239. <https://doi.org/10.1098/rsos.160239>
64. Stanley, K.K.; Szewczuk, E. Multiplexed tandem PCR: gene profiling from small amounts of RNA using SYBR Green detection. *Nucleic Acids Res.* **2005**, *33*, e180. <https://doi.org/10.1093/nar/gni182>
65. Zeale, M.R.K.; Butlin, R.K.; Barker, G.L.A.; Lees, D.C.; Jones, G. Taxon-specific PCR for DNA barcoding arthropod prey in bat faeces. *Mol. Ecol. Resour.* **2011**, *11*, 236–244. <https://doi.org/10.1111/j.1755-0998.2010.02920.x>
66. Uncu, A.O.; Uncu, A.T. A barcode-DNA analysis method for the identification of plant oil adulteration in milk and dairy products. *Food Chem.* **2020**, *326*, 126986. <https://doi.org/10.1016/j.foodchem.2020.126986>
67. Zhang, J. Exploiting formalin-preserved fish specimens for resources of DNA barcoding. *Mol. Ecol. Resour.* **2010**, *10*, 935–941. <https://doi.org/10.1111/j.1755-0998.2010.2838.x>
68. Mitchell, A. Collecting in collections: A PCR strategy and primer set for DNA barcoding of decades-old dried museum specimens. *Mol. Ecol. Resour.* **2015**, *15*, 1102–1111. <https://doi.org/10.1111/1755-0998.12380>
69. Weimer, E.T.; Montgomery, M.; Petraroia, R.; Crawford, J.; Schmitz, J.L. Performance characteristics and validation of Next-Generation Sequencing for human leucocyte antigen typing. *J. Mol. Diagn.* **2016**, *18*, 668–675. <https://doi.org/10.1016/j.jmoldx.2016.03.009>
70. Rahman, M.; McVetty, P.B.E. A review of *Brassica* seed color. *Can. J. Plant Sci.* **2011**, *91*, 437–446. <https://doi.org/10.4141/cjps10124>



71. Jiang, J.; Zhu, S.; Yuan, Y.; Wang, Y.; Zeng, L.; Batley, J.; Wang, Y.P. Transcriptomic comparison between developing seeds of yellow- and black-seeded *Brassica napus* reveals that genes influence seed quality. *BMC Plant Biol.* **2019**, *19*, 203. <https://doi.org/10.1186/s12870-019-1821-z>.
72. Divakaran, M.; Babu, K.N. Mustard. In *Encyclopedia of Food and Health*; Caballero, B., Finglas, P.M., Toldrá, F., Eds.; Oxford Academic Press: Oxford, UK; 2016; pp. 9–19.
73. Ding, Y.; Yu, S.; Wang, J.; Li, M.; Qu, C.; Li, J.; Liu, L. Comparative transcriptomic analysis of seed coats with high and low lignin contents reveals lignin and flavonoid biosynthesis in *Brassica napus*. *BMC Plant Biol.* **2021**, *21*, 246. <https://doi.org/10.1186/s12870-021-03030-5>.
74. Mattioli, P.A. *I Discorsi di M. Pietro Andrea Matthioli Sanese, Medico Cesareo, et del Serenissimo Principe Ferdinando Archiduca d'Avstria & C. nelli sei libri di Pedacio Dioscoride Anazarbeo della Materia Medicinale*; Appresso Vincenzo Valgrisi: Venetia, Italy, 1568.
75. Durante, C. *Herbario Nuovo*; Appresso Bartolomeo Bonfadino & Tito Diani: Roma, Italy, 1585.
76. Palma, L. *Le piante medicinali d'Italia. Botanica—Chimica—Farmacodinamica—Terapia*; Società Editrice Internazionale: Torino, Italy, 1964.
77. Gastaldo, P. *Compendio della flora officinale italiana*; Piccin Nuova Libreria: Padova, Italy, 1987.
78. Mariotti, M.G. L'identificazione delle piante. In *Pietro Andrea Mattioli (Siena 1501–Trento 1578). La vita, le opere, con l'identificazione delle piante*; Ferri, S., Ed.; Quattroemme: Ponte San Giovanni (PG), Italy, 1997; pp. 161–214.
79. Bandini Mazzanti, M.; Bosi, G.; Mercuri, A.M.; Accorsi, C.A.; Guarnieri, C. Plant use in a city in Northern Italy during the Late Medieval and Renaissance periods: Results of the archaeobotanical investigation of 'The Mirror Pit' (14–15th century AD) in Ferrara. *Veg. Hist. Archaeobot.* **2005**, *14*, 442–452. <https://doi.org/10.1007/s00334-005-0082-y>.
80. Pearman, G. Nuts, Seeds, and Pulses. In *The Cultural History of Plants*; Prance, G., Nesbitt, M., Eds.; Routledge: London, UK, 2005; pp. 133–152.
81. Edwards, D.; Batley, J.; Parkin, I.; Kole, C. *Genetics, Genomics and Breeding of Oilseed Brassicas*; CRC Press: Boca Raton, FL, USA, 2012.
82. Montanari, M. *Gusti del Medioevo. I prodotti, la cucina, la tavola*; Laterza: Bari, Italy, 2012.
83. Mattiolo, O. *Phytoalimurgia Pedemontana*; Vincenzo Bona: Torino, Italy, 1918.
84. De Rougemont, G. *Guida delle piante di uso comune per la salute e l'alimentazione*; Franco Muzzio: Padova, Italy, 2002.
85. van Wyk, B.E. *Culinary Herbs & Spices of the World*; The University of Chicago Press: Chicago, MI, USA, Kew Publishing: Kew, UK, 2013.
86. Zanardi, Z. *Agricoltura e alimentazione in Emilia-Romagna. Antologia di antichi testi*; Istituto per i Beni Artistici, Culturali e Naturali della Regione Emilia-Romagna, Italy; Artestampa: Modena, Italy, 2015.
87. Picchi, G. *Le conserve (Atlante dei prodotti tipici)*; INSOR, AGRA/RAI: Roma, Italy, 2004.
88. Carnevale Schianca, E. *La cucina medievale*; Leo S. Olschki: Firenze, Italy, 2011.
89. Redon, O.; Sabban, F.; Serventi, S. *A tavola nel Medioevo*; Editori Laterza: Bari, Italy, 1994.
90. Scully, T. *The Art of Cookery in the Middle Ages*; The Boydell Press: Woodbridge, UK, 1995.
91. Guarnieri, C.; Librenti, M. Ferrara, sequenza insediativa pluristratificata. Via Vaspergolo—Corso Porta Reno (1993–1994). 1. Lo scavo. *Archeol. Medievale* **1996**, *23*, 275–307.
92. Guarnieri, C. Un singolare esemplare di specchio a supporto ligneo proveniente dallo scavo di via Vaspergolo a Ferrara. In *Annales du 14ème Congrès de l'Association Internationale pour l'Histoire du Verre, Venezia-Milano, Italy, 1998*; AIHV: Lochem, The Netherlands, 2000; pp. 287–292.
93. Guarnieri, C. *Medioevo scartato. Il "pozzo" e la vasca di scarico di via Vaspergolo—Corso Porta Reno a Ferrara e la produzione dei boccali-bicchieri in maiolica arcaica*; in press.
94. Hollingsworth, P.; Forrest, L.; Spouge, J.; Hajibabaei, M.; Ratnasingham, S.; van der Bank, M.; Chase, M.; Cowan, R.; Erickson, D.; Fazekas, A.; et al. A DNA barcode for land plants. *Proc. Natl. Acad. Sci. USA* **2009**, *106*, 12794–12797. <https://doi.org/10.1073/pnas.0905845106>.
95. De Felice, S. Using DNA Barcode and Chloroplast Microsatellite Markers to Assess Modern and Ancient *Brassica* spp. Biodiversity. Ph.D. Thesis, University of Aberystwyth, Aberystwyth, UK, 2014.
96. Sanger, F.; Nicklen, S.; Coulson, A. DNA sequencing with chain-terminating inhibitors. *Proc. Natl. Acad. Sci. USA* **1977**, *74*, 5463–5467. <https://doi.org/10.1073/pnas.74.12.5463>.
97. Moggi, G. Origine ed evoluzione storica dell'erbario. In *Herbaria. Il grande libro degli erbari italiani*; Taffetani, F., Ed.; Nardini Editore: Firenze, Italy, 2012; pp. 3–32.
98. Danin, A.; Buldrini, F.; Bandini Mazzanti, M.; Bosi, G. The history of the *Portulaca oleracea* aggregate in the Emilia-Romagna Po Plain (Italy) from the Roman Age to the present. *Plant Biosyst.* **2014**, *148*, 622–634. <https://doi.org/10.1080/11263504.2013.788098>.
99. Pulvirenti, S.; Indriolo, M.M.; Pavone, P.; Costa, R.M.S. Study of a pre-Linnaean herbarium attributed to Francesco Cupani (1657–1710). *Candollea* **2015**, *70*, 67–99. <https://doi.org/10.15553/c2015v701a8>.
100. Costa, R.M.S.; Pavone, P.; Caruso, R.; Pulvirenti, S. Diachronical analysis of biodiversity: Study of a herbarium "reviewed" by Francesco Cupani (1657–1710) at the end of the 17th century. *Plant Biosyst.* **2016**, *150*, 834–845. <https://doi.org/10.1080/11263504.2016.1196761>.
101. Bosi, G.; Herchenbach, M.; Buldrini, F.; Rinaldi, R.; Bandini Mazzanti, M. On the trail of date-plum (*Diospyros lotus* L.) in Italy and its first archaeobotanical evidence. *Econ. Bot.* **2017**, *71*, 133–146. <https://doi.org/10.1007/s12231-017-9377-z>.

102. Vicentini, C.B.; Buldrini, F.; Bosi, G.; Romagnoli, C. “Spigo nardo”: From the Erbario Estense a possible solution for its taxonomical attribution. *Rend. Fis. Acc. Lincei* **2018**, *29*, 909–921. <https://doi.org/10.1007/s12210-018-0739-y>.
103. Vicentini, C.B.; Buldrini, F.; Romagnoli, C.; Bosi, G. Tobacco in the Erbario Estense and other Renaissance evidence of the Columbian taxon in Italy. *Rend. Fis. Acc. Lincei* **2020**, *31*, 1117–1126. <https://doi.org/10.1007/s12210-020-00959-x>.
104. Camus, J.; Penzig, O. Illustrazione dell'erbario estense. *Atti Soc. Nat. Modena, Mem. Ser. III* **1885**, *IV*, 14–57.
105. Chiovenda, E. Un antichissimo erbario anonimo del Museo Botanico di Firenze. I-II. *Ann. Bot.* **1927**, *17*, 119–139.
106. Chiovenda, E. Un antichissimo erbario anonimo del Museo Botanico di Firenze. III. *Ann. Bot.* **1932**, *19*, 122–144.
107. Soldano, A. L'erbario di Ulisse Aldrovandi—Volumi I e II. *Atti Ist. Ven. Sci. Lett. Arti Cl. Sci. Fis. Mat. Nat.* **2000**, *158*, 1–246.
108. Stefanaki, A.; Thijsse, G.; van Huffelen, G.A.; Eurlings, M.C.M.; van Andel, T. The *En Tibi* herbarium, a 16th century Italian treasure. *Bot. J. Linn. Soc.* **2018**, *187*, 397–427. <https://doi.org/10.1093/botlinnean/boy024>.
109. Stefanaki, A.; Porck, H.; Grimaldi, I.M.; Thurn, N.; Pugliano, V.; Kardinaal, A.; Saleminck, J.; Thijsse, G.; Chavannes-Maze, C.; Kwakkel, E.; et al. Breaking the silence of the 500-year-old smiling garden of everlasting flowers: The *En Tibi* book herbarium. *PLoS ONE* **2019**, *14*, e0217779. <https://doi.org/10.1371/journal.pone.0217779>.
110. Cristofolini, G.; Nepi, C. La paternità del cosiddetto “Erbario Merini” conservato presso il Museo di Storia Naturale dell'Università di Firenze: Una questione aperta. *Not. Soc. Bot. Ital.* **2021**, *5*, 55–59.
111. Wales, N.; Ramos-Madrigo, J.; Cappellini, E.; Carmona Baez, A.; Samaniego Castruita, J.A.; Romero-Navarro, J.A.; Carøe, C.; Avila-Arcos, M.C.; Penaloza, F.; Moreno-Mayar, J.V.; et al. The limits and potential of paleogenomic techniques for reconstructing grapevine domestication. *J. Archaeol. Sci.* **2016**, *72*, 57–70. <https://doi.org/10.1016/j.jas.2016.05.014>.
112. Ramos-Madrigo, J.; Wiborg Runge, A.K.; Bouby, L.; Lacombe, T.; Samaniego Castruita, J.A.; Adam-Blondom, A.F.; Figueiral, I.; Hallavant, C.; Martínez-Zapater, J.M.; Schaal, C.; et al. Palaeogenomic insights into the origins of French grapevine diversity. *Nat. Plants* **2019**, *5*, 595–603. <https://doi.org/10.1038/s41477-019-0437-5>.
113. Scott, M.F.; Botigué, L.R.; Brace, C.; Stevens, C.J.; Mulin, V.E.; Stevenson, A.; Thomas, M.G.; Fuller, D.Q.; Mott, R. A 3000-year-old Egyptian emmer wheat genome reveals dispersal and domestication history. *Nat. Plants* **2019**, *5*, 1120–1128. <https://doi.org/10.1038/s41477-019-0534-5>.