

Aberystwyth University

*Correction to: New molecular evidence on genome relationships and chromosome identification in fescue (*Festuca*) and ryegrass (*Lolium*)*

Pašakinskienė, I.; Anamthawat-Jönsson, K.; Humphreys, M. W.; Paplauskiene, V.; Jones, R. N.

Published in:
Heredity

DOI:
[10.1038/s41437-021-00488-9](https://doi.org/10.1038/s41437-021-00488-9)

Publication date:
2022

Citation for published version (APA):

Pašakinskienė, I., Anamthawat-Jönsson, K., Humphreys, M. W., Paplauskiene, V., & Jones, R. N. (2022). Correction to: New molecular evidence on genome relationships and chromosome identification in fescue (*Festuca*) and ryegrass (*Lolium*). *Heredity*, *128*(2), 139-140. <https://doi.org/10.1038/s41437-021-00488-9>

Document License CC BY

General rights

Copyright and moral rights for the publications made accessible in the Aberystwyth Research Portal (the Institutional Repository) are retained by the authors and/or other copyright owners and it is a condition of accessing publications that users recognise and abide by the legal requirements associated with these rights.

- Users may download and print one copy of any publication from the Aberystwyth Research Portal for the purpose of private study or research.
- You may not further distribute the material or use it for any profit-making activity or commercial gain
- You may freely distribute the URL identifying the publication in the Aberystwyth Research Portal

Take down policy

If you believe that this document breaches copyright please contact us providing details, and we will remove access to the work immediately and investigate your claim.

tel: +44 1970 62 2400
email: is@aber.ac.uk

CORRECTION



Correction to: New molecular evidence on genome relationships and chromosome identification in fescue (*Festuca*) and ryegrass (*Lolium*)

I. Pašakinskienė, K. Anamthawat-Jönsson, M. W. Humphreys, V. Paplauskiene and R. N. Jones

© The Author(s), under exclusive licence to The Genetics Society 2022

Heredity (2022) 128:139–140; <https://doi.org/10.1038/s41437-021-00488-9>

Correction to: *Heredity* <https://doi.org/10.1046/j.1365-2540.1998.00446.x>, published online 1 December 1998

In Fig. 2 and Fig. 3 of this article are appear twisted and upside down the figures. The correct figures are given below.

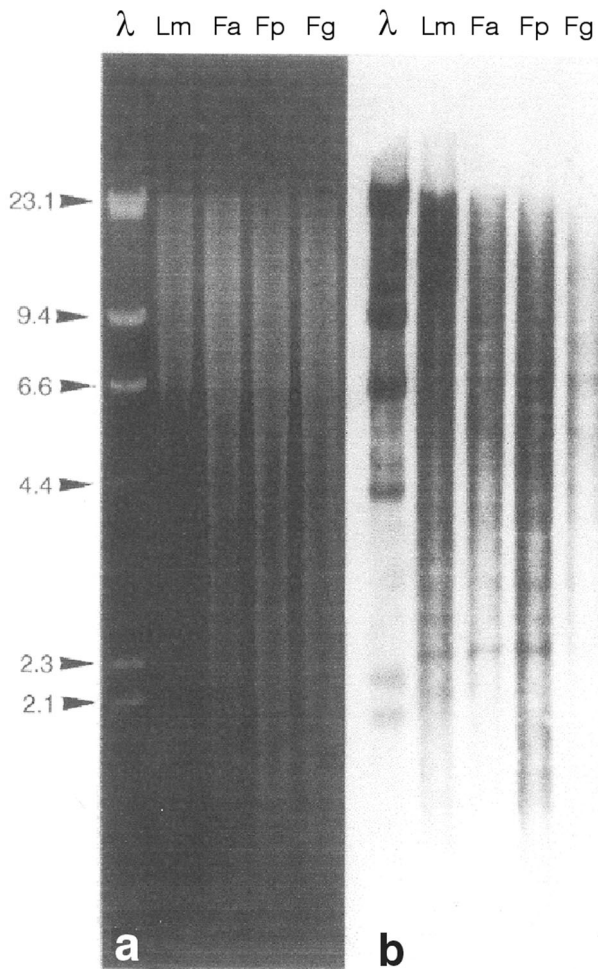


Fig. 2 Genomic Southern hybridization using the ECL method. **(a)** Ethidium bromide-stained gels showing *Bam*HI digests of *Lolium multiflorum* (*Lm*), *F. arundinacea* (*Fa*), *F. pratensis* (*Fp*) and *F. glaucescens* (*Fg*), 1 µg per lane. **(b)** Luminograph showing hybridization of a genomic *Lm* probe to the same digests **(a)** of *Lm*, *Fa*, *Fp* and *Fg*; ECL detection 35-min. The DNA size maker is given in kb.

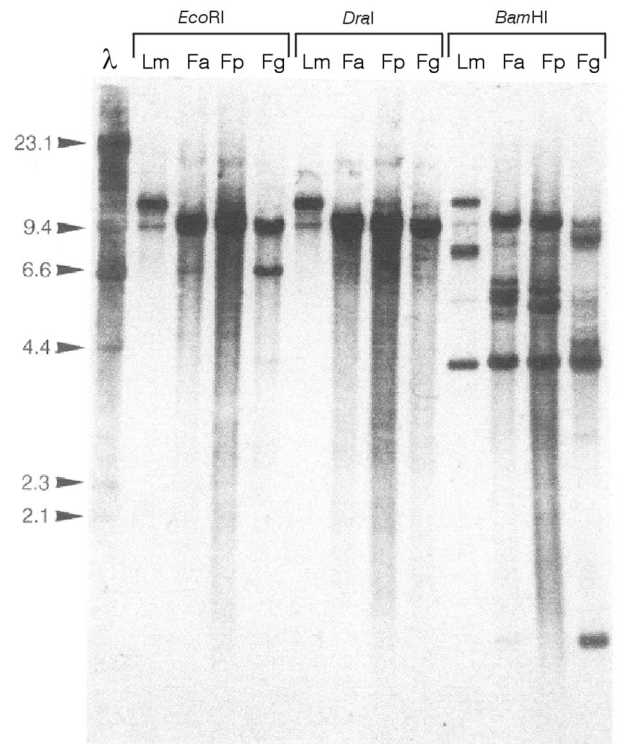


Fig. 3 Southern blot hybridization patterns of rDNA pTa7I to *L. multiflorum* (*Lm*), *F. arundinacea* (*Fa*), *F. pratensis* (*Fp*) and *F. glaucescens* (*Fg*), 1 µg per lane. Digests 2–5 with *Eco*RI, 6–9 *Dra*I, 10–13 *Bam*HI, track 1 for marker. ECL detection 5 min. The DNA size maker is given in kb.