

Aberystwyth University

*Co-production of ethanol and squalene using a *Saccharomyces cerevisiae* ERG1 (squalene epoxidase) mutant and agro-industrial feedstock*

Hull, Claire; Loveridge, Joel; Rolley, Nicola; Donnison, Iain Simon; Kelly, Steven Lewis; Kelly, Diane Elizabeth

Published in:

Biotechnology for Biofuels

DOI:

[10.1186/s13068-014-0133-7](https://doi.org/10.1186/s13068-014-0133-7)

Publication date:

2014

Citation for published version (APA):

Hull, C., Loveridge, J., Rolley, N., Donnison, I. S., Kelly, S. L., & Kelly, D. E. (2014). Co-production of ethanol and squalene using a *Saccharomyces cerevisiae* ERG1 (squalene epoxidase) mutant and agro-industrial feedstock. *Biotechnology for Biofuels*, 7, Article 133. <https://doi.org/10.1186/s13068-014-0133-7>

General rights

Copyright and moral rights for the publications made accessible in the Aberystwyth Research Portal (the Institutional Repository) are retained by the authors and/or other copyright owners and it is a condition of accessing publications that users recognise and abide by the legal requirements associated with these rights.

- Users may download and print one copy of any publication from the Aberystwyth Research Portal for the purpose of private study or research.
- You may not further distribute the material or use it for any profit-making activity or commercial gain
- You may freely distribute the URL identifying the publication in the Aberystwyth Research Portal

Take down policy

If you believe that this document breaches copyright please contact us providing details, and we will remove access to the work immediately and investigate your claim.

tel: +44 1970 62 2400

email: is@aber.ac.uk



RESEARCH ARTICLE

Open Access

Co-production of ethanol and squalene using a *Saccharomyces cerevisiae* *ERG1* (squalene epoxidase) mutant and agro-industrial feedstock

Claire M Hull¹, E Joel Loveridge², Nicola J Rolley¹, Iain S Donnison³, Steven L Kelly¹ and Diane E Kelly^{1*}

Abstract

Background: Genetically customised *Saccharomyces cerevisiae* that can produce ethanol and additional bio-based chemicals from sustainable agro-industrial feedstocks (for example, residual plant biomass) are of major interest to the biofuel industry. We investigated the microbial biorefinery concept of ethanol and squalene co-production using *S. cerevisiae* (strain YUG37-*ERG1*) wherein *ERG1* (squalene epoxidase) transcription is under the control of a doxycycline-repressible *tetO*-*CYC1* promoter. The production of ethanol and squalene by YUG37-*ERG1* grown using agriculturally sourced grass juice supplemented with doxycycline was assessed.

Results: Use of the *tetO*-*CYC1* promoter permitted regulation of *ERG1* expression and squalene accumulation in YUG37-*ERG1*, allowing us to circumvent the lethal growth phenotype seen when *ERG1* is disrupted completely. In experiments using grass juice feedstock supplemented with 0 to 50 μg doxycycline mL^{-1} , YUG37-*ERG1* fermented ethanol (22.5 ± 0.5 mg mL^{-1}) and accumulated the highest squalene content (7.89 ± 0.25 mg g^{-1} dry biomass) and yield (18.0 ± 4.18 $\text{mg squalene L}^{-1}$) with supplements of 5.0 and 0.025 μg doxycycline mL^{-1} , respectively. Grass juice was found to be rich in water-soluble carbohydrates (61.1 ± 3.6 mg sugars mL^{-1}) and provided excellent feedstock for growth and fermentation studies using YUG37-*ERG1*.

Conclusion: Residual plant biomass components from crop production and rotation systems represent possible substrates for microbial fermentation of biofuels and bio-based compounds. This study is the first to utilise *S. cerevisiae* for the co-production of ethanol and squalene from grass juice. Our findings underscore the value of the biorefinery approach and demonstrate the potential to integrate microbial bioprocess engineering with existing agriculture.

Keywords: Bio-based products, *ERG1*, Ethanol, Sterol, Squalene, Squalene epoxidase

Background

Microbial biotechnology is employed for the generation of novel industrial, pharmaceutical and medical compounds and assists in the development of more efficient commercial production processes. Microorganisms that possess the enzymatic machinery needed to unlock fuel energy from cellulosic and lignocellulosic fractions of plant biomass [1-5] and recombinant strains that can utilise alternative substrates (such as inulin [6]) for the production of additional bio-based products [7-10], are of major interest to biofuel and biorefinery industries. In

the following study we investigated the potential to co-produce ethanol and squalene using a genetically customised strain of *S. cerevisiae*.

Squalene is a polyunsaturated, triterpenic hydrocarbon (2,6,10,15,19,23-hexamethyltetracosane-2,6,10,14,18,22-hexaene) with nutritional, cosmetic, pharmaceutical and medical applications [11-14]. As a key intermediate of bacterial hopanoid and eukaryotic sterol biosynthesis [15,16], squalene is ubiquitous in nature. Squalene can be derived from plant oils [17,18] and the liver oil of deep sea sharks [19,20]. However, given the increasing commercial demand for squalene alongside growing international concern for the fate of food crops and the exploitation of marine habitats, sustainable sources of squalene are required.

* Correspondence: D.Kelly@swansea.ac.uk

¹Institute of Life Science, College of Medicine, Swansea University, Swansea, Wales SA2 8PP, UK

Full list of author information is available at the end of the article

Research into the molecular controls and growth conditions that affect sterol biosynthesis [21-24] has highlighted the scope to utilise the brewing yeast *S. cerevisiae* for squalene production [25-27,16]. Under low oxygen or anaerobic conditions [28,29] and in heme-deficient yeast [30], squalene accumulates ($\geq 70\%$ of total squalene fraction) in intracellular lipid droplets [16,31]. However, under aerobic growth conditions squalene is converted to ergosterol through the action of proteins encoded by the *ERG* (ergosterol biosynthetic) genes [23]. Of these, squalene epoxidase, encoded by *ERG1* [32,33] is an oxygen-requiring enzyme [34] that is essential for the initial conversion of squalene to squalene epoxide (Figure 1).

We investigated the potential to produce squalene as a bio-based chemical product of yeast fermentation using a customised *S. cerevisiae* strain (YUG37-*ERG1*) wherein *ERG1* gene transcription is under the control of a

doxycycline-repressible promoter that replaces the *ERG1* promoter at the chromosomal locus [35,36]. Because low growth temperature and decreased oxygen availability are favourable for both ethanol fermentation and the inhibition of yeast squalene epoxidase [29,34], we envisaged the opportunity to co-produce ethanol and squalene using a biorefinery approach. For this purpose we utilised juice extracted from perennial ryegrass (*Lolium perenne*) [37,38]. Grass juice represents one of several fractions from *L. perenne* biomass that are currently under investigation as feedstock for biofuel production and microbial bioprocess engineering in the United Kingdom [39-41]).

Methods

Yeast strains and growth media

Squalene production studies were undertaken using a laboratory strain of *Saccharomyces cerevisiae* (YUG37-*ERG1*)

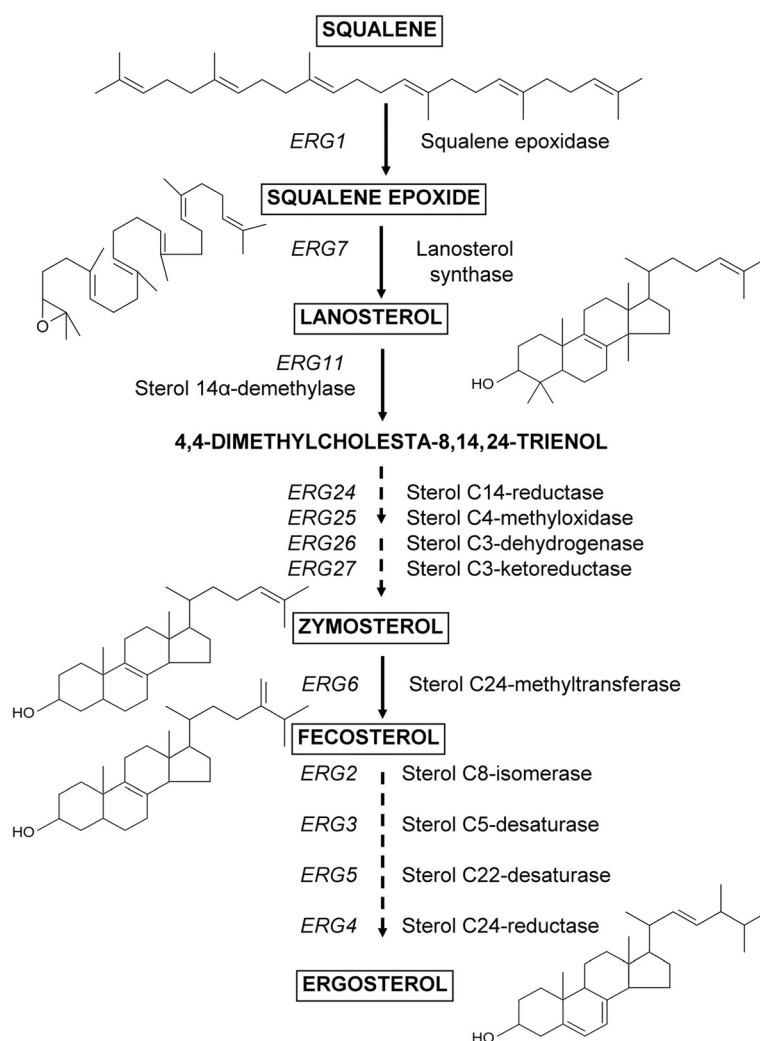


Figure 1 Ergosterol biosynthetic pathway in yeast. Structures of squalene and selected sterol intermediates (boxed); unbroken arrow = single enzymatic step; broken arrow = multiple enzymatic steps. Gene names are upper case, italicised; protein names are lower case, regular.

in which squalene epoxidase (*ERG1* protein) expression is controlled using a previously optimised doxycycline-repressible *tetO₇-CYC1* promoter system [35,36,42]. The wild-type *S. cerevisiae* parent strain (YUG37; Hegemann, J., unpublished) was used as a comparator during initial experiments. Both strains were routinely maintained on yeast-peptone-dextrose (YPD) medium containing (w/v): 2% glucose, 2% Bacto Peptone and 1% yeast extract - including 2% agar when required (all media components supplied by Difco).

For ethanol and squalene co-production experiments, grass juice (GJ) feedstock was extracted from ryegrass *Lolium perenne* supplied by the Institute of Biological, Environmental Research and Rural Sciences (IBERS, UK) as described previously [37]. GJ was screened to remove large particulates, autoclaved (121°C, 30 min) and frozen (-80°C) prior to use as a growth and fermentation substrate. All other chemicals used in this study were supplied by Sigma unless otherwise stated.

Gas chromatography-mass spectrometry (GC-MS) sterol analysis

Cell pellets from experimental cultures were resuspended in 7:3 methanol:water containing 18% (w/v) potassium hydroxide, 0.1% (w/v) pyrogallol and 10 µg cholesterol (as the internal standard), and heated at 90°C for 2 h. Non-saponifiable lipids (squalene and sterols) were extracted into glass HPLC vials using 3 × 2 mL hexane. Extracts were evaporated to dryness using a centrifugal evaporator (Heto Maxi dry plus) and derivatised using 100 µL N,O-bis(trimethylsilyl)trifluoroacetamide and trimethylchlorosilane (BSTFA-TMCS [99:1]) and 50 µL anhydrous pyridine at 70°C for 2 h [43]. Trimethylsilyl (TMS)-derivatised sterols were analysed using a 7890A GC-MS system (Agilent Technologies) with a DB-5MS fused silica column (30 m × 0.25 mm × 0.25 µm film thickness; J & W Scientific). The oven temperature was initially held at 70°C for 4 min, then increased at 25°C min⁻¹ to a final temperature of 280°C, which was held for a further 25 min. Samples were analysed in splitless mode (1 µL injection volume) using helium carrier gas, electron impact ionization (ion source temperature of 150°C) and scanning from m/z 40 to 850 [44].

GC-MS data files were analysed using MSD Enhanced ChemStation software (Agilent Technologies Inc.) to determine squalene and sterol profiles for all isolates and for derivation of integrated peak areas. Sterols were identified by reference to retention times and mass fragmentation patterns for known standards.

Sterol analysis of strains

Initial experiments were undertaken to determine the effect of doxycycline on the growth and sterol composition of the wild-type YUG37 parent and doxycycline-repressible

YUG37-*ERG1* strain. Single colonies from each were used to inoculate 10-mL volumes of YPD medium (containing 0 to 50 µg doxycycline mL⁻¹) with starting cell densities of 5 × 10⁵ mL⁻¹. Cultures were grown in 50-mL flasks at 30°C, 180 rpm for 48 h, after which time the cell biomass was harvested by centrifugation. Cell pellets were dried to constant mass for biomass (g dry weight L⁻¹) determinations, and the cellular squalene and sterol content determined by GC-MS as described above.

Production of ethanol and squalene from GJ feedstock

Simultaneous co-production

Experiments to achieve simultaneous co-production of ethanol and squalene were performed in 100-well honeycomb microplates using a Bioscreen C (Oy Growth Curves Ab Ltd, Finland). Uniform starting (*t*₀) culture densities were achieved by resuspending a single YUG37-*ERG1* colony in GJ and diluting to obtain 5 × 10⁵ cells mL⁻¹ in 1 mL of GJ containing 0 to 50 µg doxycycline mL⁻¹. Starting cultures were vortexed and aliquoted into Bioscreen wells (3 × 300 µL replicates per doxycycline treatment). All experiments were incubated at 20°C (typical of ale production) in the Bioscreen (no shaking regime) for 96 h, with optical density readings (at 600 nm) taken every 45 min [31]. Data was exported from the Bioscreen in ASCII format prior to analysis using Excel (Microsoft Office 2003). Dry weight determinations and GC-MS sterol analyses were performed on the biomass fractions from pooled Bioscreen wells.

Growth parameters were derived as described previously [38]. Briefly, ΔOD values describe maximum OD minus minimum OD; the lag phase is defined as the length of time a culture spends at <10% of maximum OD; *T*_{1/2}Max values are equivalent to the time taken to reach half the maximum increase in growth of a culture (ΔOD × 0.5). Minimum (that is, fastest) doubling times (DT_{min}) were estimated by dividing the natural logarithm of 2 by the fastest culture growth rates (μ), where μ is the gradient of the linear trend line fitted to log-transformed OD data.

Sequential production

The stepwise production of ethanol and squalene was monitored using the Bioscreen. YUG37-*ERG1* was first grown for 48 h at 20°C using GJ feedstock; at *t*_{48h} Bioscreen measurements were suspended and 100 µL of supernatant removed from experimental wells for ethanol analysis [38]. This volume was immediately replaced with 100 µL of fresh GJ containing doxycycline (to give a final concentration of 5 or 50 µg doxycycline mL⁻¹) and the Bioscreen restarted using a medium shaking regime to promote new growth and squalene accumulation. Dry weight determinations and GC-MS sterol

analyses were performed on the biomass fractions from pooled Bioscreen wells at t_{96h} .

Sugar and ethanol assays

At specific time intervals (t_{0h} , t_{48h} , t_{72h} and t_{96h}) Bioscreen measurements were suspended and a 10- μ L volume of culture supernatant removed from representative experimental wells for ethanol and sugar analyses.

Sugar analyses were performed on suitably diluted (typically 2,500-fold) culture medium in 100 mM potassium phosphate, pH 7.0, containing 10 mM $MgSO_4$, 1 mM NAD^+ , 1.5 mM ATP and 20 U mL^{-1} *Leuconostoc mesenteroides* glucose-6-phosphate dehydrogenase (Worthington Biochemical Corporation). Concentrations of glucose, fructose, sucrose and fructan were determined from the changes in absorbance at 340 nm following sequential addition of 20 U mL^{-1} *S. cerevisiae* hexokinase (Worthington Biochemical Corporation), 20 U mL^{-1} *E. coli* phosphoglucose isomerase (Megazyme International Ireland Ltd), 1.5 U mL^{-1} *S. cerevisiae* sucrase/maltase (Megazyme International Ireland Ltd) and 10 U mL^{-1} fructanase from *Aspergillus niger* (Megazyme International Ireland Ltd), respectively. Standards of glucose, fructose, sucrose and chicory inulin were used to calibrate the assay.

Ethanol determinations were made using a spectrophotometric ethanol assay kit (K-ETOH 11/06; Megazyme Ltd) according to manufacturer's instructions. All samples were diluted 1,000-fold with distilled water prior to analysis.

Results and discussion

Of the many microorganisms that could be employed for ethanol production, *S. cerevisiae* remains the species of choice in industrial-scale fermentation processes [45].

Similarly, whilst squalene could be sourced from alternative microbes ([16,27] for reviews), because of the need for specific culture conditions and because many have not been granted GRAS (generally regarded as safe) status, they cannot be exploited in a commercial setting. The present study is the first to utilise *S. cerevisiae* for the co-production of ethanol and squalene from a single feedstock. We identify clear avenues for the integration of yeast biotechnology and existing agriculture for the production of bio-based compounds, thereby adding value to such fermentations.

Regulation of growth and squalene accumulation

Data from initial experiments using YPD medium (Table 1) demonstrate the potential to maximise squalene production from *S. cerevisiae* through regulation of *ERG1* expression (Figure 1) and indicate that in order to achieve an optimal squalene yield, repression of *ERG1* gene expression must be sufficient to result in increased squalene accumulation, but not complete growth inhibition. The highest squalene content (7.85 ± 0.02 mg g^{-1} dry biomass) was recorded in YUG37-*ERG1* grown using YPD supplemented with 50 μ g doxycycline mL^{-1} ; however, because the biomass of these cultures was low (1.39 ± 0.12 mg L^{-1}), the squalene titre was sub-optimal (10.87 ± 0.93 mg L^{-1}). Conversely, whilst the squalene content of YUG37-*ERG1* grown with 0.025 μ g doxycycline mL^{-1} was comparatively lower (3.57 ± 0.2 mg g^{-1} dry biomass), higher overall culture growth (4.3 ± 0.28 mg L^{-1}) supported an improved squalene titre (Table 1; 15.04 ± 1.42 mg L^{-1}).

Alterations in yeast sterol composition

Doxycycline did not alter the sterol composition of the YUG37 parent across the range of doxycycline

Table 1 Phenotypic sterol analysis of YUG37 parent and YUG37-*ERG1* mutant

DOX (μ g mL^{-1})	Strain	Sterol composition (mg sterol g^{-1})				Total (mg g^{-1})	Biomass (g L^{-1})	Squalene titre (mg L^{-1})
		^a 14 α -DM	^b 14 α -M	Ergosterol	Squalene			
0	YUG37	1.45 [0.27]	0.33 [0.03]	3.27 [0.39]	0.16 [0.08]	5.31 [0.19]	3.75 [0.35]	0.50 [0.11]
	YUG37- <i>ERG1</i>	1.51 [0.29]	0.39 [0.07]	3.08 [0.29]	0.40 [0.03]	5.28 [0.24]	4.55 [0.21]	1.76 [0.02]
0.025	YUG37	1.30 [0.16]	0.20 [0.06]	3.09 [0.35]	0.17 [0.13]	4.75 [0.02]	4.25 [0.21]	0.55 [0.31]
	YUG37- <i>ERG1</i>	1.55 [0.09]	0.40 [0.03]	2.43 [0.08]	3.57 [0.20]	7.88 [0.31]	4.30 [0.28]	15.04 [1.42]
0.05	YUG37	1.47 [0.22]	0.26 [0.03]	3.03 [0.14]	0.30 [0.04]	4.98 [0.19]	3.90 [0.14]	1.23 [0.03]
	YUG37- <i>ERG1</i>	0.78 [0.10]	0.40 [0.08]	2.20 [0.09]	4.24 [0.30]	7.55 [0.33]	2.50 [0.28]	10.31 [0.79]
0.5	YUG37	1.36 [0.22]	0.24 [0.06]	2.79 [0.32]	0.23 [0.06]	4.77 [0.30]	3.95 [0.07]	1.02 [0.14]
	YUG37- <i>ERG1</i>	0.45 [0.01]	0.17 [0.02]	1.58 [0.12]	6.75 [0.20]	8.96 [0.06]	1.75 [0.21]	11.93 [1.27]
5	YUG37	1.54 [0.29]	0.29 [0.06]	3.06 [0.42]	0.20 [0.10]	5.03 [0.11]	3.60 [0.42]	0.57 [0.12]
	YUG37- <i>ERG1</i>	0.21 [0.04]	0.08 [0.04]	1.49 [0.02]	7.66 [0.01]	9.45 [0.08]	1.48 [0.11]	11.30 [0.82]
50	YUG37	1.21 [0.23]	0.23 [0.01]	2.93 [0.26]	0.14 [0.06]	4.63 [0.27]	3.75 [0.35]	0.59 [0.05]
	YUG37- <i>ERG1</i>	0.11 [0.03]	0.02 [0.01]	1.50 [0.03]	7.85 [0.02]	9.48 [0.10]	1.39 [0.12]	10.87 [0.93]

All cultures grown at 30°C, 180 rpm for 48 h on YPD medium. Mean values ($n = 3 \pm SD$); DOX = doxycycline. Maximum squalene content and yield are emboldened.
^a = sum of all 14 α -demethylated sterols; ^b = sum of 14 α -methylated sterols.

concentrations (0 to 50 $\mu\text{g mL}^{-1}$) tested (Table 1). That no significant differences in the proportion of 14 α -demethylated or 14 α -methylated sterol intermediates were detected in treated YUG37 cultures (Figure 2C and 2D) indicates that doxycycline did not affect the function of other *ERG* genes or proteins involved in ergosterol biosynthesis (Figure 1). Changes in the sterol composition of doxycycline-treated YUG37-*ERG1* cultures, namely overall decreases in both 14 α -demethylated and 14 α -methylated sterol intermediates, are consistent with the specific inhibition of squalene epoxidase expression. Enhanced accumulation of squalene at the expense of other sterol intermediates has previously been reported in *S. cerevisiae* treated with the squalene epoxidase inhibitor, terbinafine [27].

Growth and ethanol fermentation: grass juice feedstock

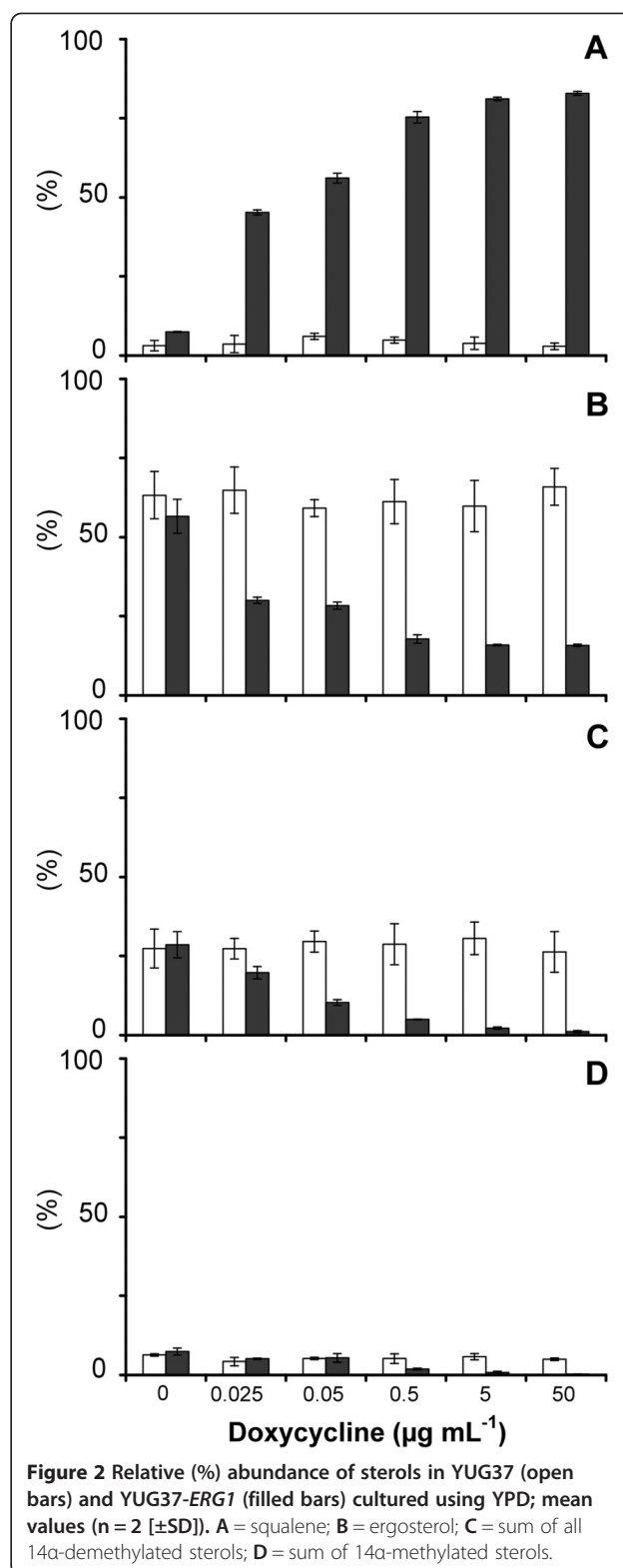
Growth parameters for YUG37-*ERG1* grown using grass juice (GJ) (Table 2 and Figure 3) underscore data from previous studies that highlight its potential as a feedstock for *S. cerevisiae* [37,38]. GJ was rich in water-soluble carbohydrates (Table 3) that were readily utilised for growth and ethanol fermentation. In simultaneous ethanol and squalene production experiments, maximum concentrations of ethanol (20 to 23 mg mL^{-1}) were produced after 72 h of fermentation. Similar concentrations (22.5 ± 0.5 $\text{mg ethanol mL}^{-1}$) were recorded in sequential production experiments (Table 4, asterisked data) after just 48 h, prior to the addition of doxycycline. Taken as a whole, the ethanol titres in this study are comparable to those achieved previously using GJ and alternative wild-type laboratory strains of *S. cerevisiae* [37,38].

Ethanol titres

High ethanol titres have recently been achieved using pure inulin and soybean feedstock and an engineered yeast strain (*Saccharomyces* sp. W0) expressing the inulinase gene from *Pichia guilliermondii* [10]. Work is now needed to address the potential to use recombinant yeast to ferment grass juice to ethanol on an industrial scale and alternative (for example, flocculating [46-48] or high ethanol producing [10] host strains of *S. cerevisiae*).

Squalene accumulation: grass juice feedstock

The highest squalene content (7.89 ± 0.25 mg g^{-1} dry biomass) and squalene titres (18.0 ± 4.18 mg L^{-1}) were achieved during simultaneous production experiments in which GJ was supplemented (at t_0 h) with 5 and 0.025 μg doxycycline mL^{-1} , respectively (Table 4 and Figure 4). In subsequent experiments the highest total biomass (5.2 to 5.4 g L^{-1}) was recorded 48 h after the removal of culture supernatant and the addition of fresh



doxycycline-supplemented GJ (Table 4, asterisked data). However, concomitant with the accumulation of ergosterol during initial growth in the absence of doxycycline

Table 2 Growth parameters for YUG37-*ERG1* cultured on GJ at 20°C in the Bioscreen

DOX ($\mu\text{g mL}^{-1}$)	ΔOD	Lag phase (h)	$T_{1/2}\text{Max}$ (h)	DT_{min} (h)
0	1.69 [0.01]	11.3 [0.4]	21.8 [0.4]	3.8 [0.4]
0.025	1.66 [0.01]	11.4 [0.2]	22.6 [0.5]	4.3 [0.1]
0.05	1.63 [0.01]	11.5 [0.4]	24.1 [1.2]	5.4 [0.2]
0.1	1.54 [0.01]	11.5 [0.7]	28.9 [0.9]	6.0 [0.7]
0.5	1.43 [0.02]	11.8 [0.4]	31.5 [0.7]	8.6 [0.5]
1	1.34 [0.02]	11.5 [0.4]	35.8 [0.4]	10.3 [0.4]
5	1.35 [0.01]	11.5 [0.7]	38.0 [2.8]	10.3 [0.7]
50	1.34 [0.02]	10.9 [0.5]	37.0 [1.4]	10.4 [0.9]

Mean values ($n = 3$ [$\pm\text{SD}$]). DOX = doxycycline; ΔOD = maximum minus minimum optical density reading at 600 nm; Lag phase = length of time culture remains at < 10% of maximum OD; $T_{1/2}\text{Max}$ = time taken to achieve half maximal culture growth (maximum OD minus minimum OD \times 0.5); DT_{min} = fastest observed doubling time.

(4.34 ± 0.07 and 3.80 ± 0.37 mg ergosterol g^{-1} dry biomass) squalene titres (12.0 ± 1.83 and 12.7 ± 0.24 g squalene L^{-1} , respectively) were lower than those recorded in simultaneous production experiments in which doxycycline was present from t_0 h. The use of bioreactors to maintain optimal growth and fermentation conditions for ethanol and squalene co-production using YUG37-*ERG1* is now an avenue for bioprocess development and commercial scale-up.

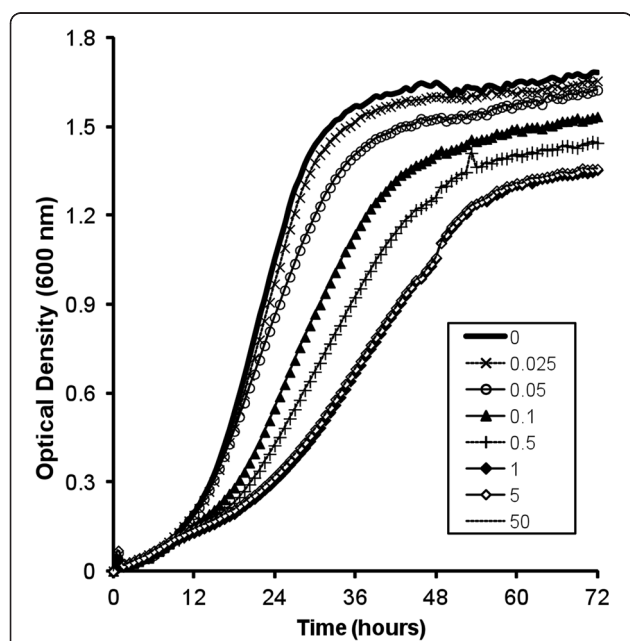


Figure 3 Bioscreen growth curves for YUG37-*ERG1* at 20°C on GJ feedstock. Legend indicates concentration of doxycycline ($\mu\text{g mL}^{-1}$); curves for 5 and 50 $\mu\text{g mL}^{-1}$ overlap.

Table 3 Glucose, fructose, sucrose and fructan content of GJ media during fermentation with YUG37-*ERG1*

Sugar	Content in medium (mg mL^{-1})				
	GJ t_0	GJ t_{48}	GJ t_{96}	GJ $t_{96}^{0.5}$	GJ t_{96}^{50}
Glucose	7.3 [1.8]	0.2 [0.2]	—	—	—
Fructose	22.2 [2.0]	0.4 [0.1]	0.5 [0.1]	0.8 [0.5]	0.6 [0.1]
Sucrose	0.5 [0.3]	0.2 [0.2]	0.1 [0.2]	0.2 [0.2]	0.7 [0.2]
Fructan	31.2 [2.4]	17.8 [0.5]	17.4 [0.04]	17.8 [1.2]	15.7 [2.9]
Total	61.1 [3.6]	18.5 [0.9]	18.1 [0.2]	18.9 [1.4]	16.9 [2.9]

Mean values ($n = 2$ [$\pm\text{SD}$]). Superscripts 0.5 and 50 refer to media containing 0.5 and 50 $\mu\text{g mL}^{-1}$ doxycycline, respectively; Strikethrough = not detected.

Advantages of the doxycycline-regulatable promoter system

The maximum squalene titres achieved using GJ in the present study are comparable to those recently reported for *S. cerevisiae* grown on standard yeast media in the presence of the squalene epoxidase inhibitor, terbinafine [27]. However, in that study a terbinafine concentration of 300 μM was required to produce the optimum squalene titre (20.70 ± 1.00 mg L^{-1}). In our work, a comparable squalene titre was achieved by repressing overall *ERG1* gene transcription with just 0.025 $\mu\text{g mL}^{-1}$ (0.05 μM) doxycycline (Table 4). In addition to its sensitivity, use of the promoter system to attenuate squalene epoxidase synthesis at the *ERG1* gene level circumvents the potential to select for protein-level mutations that conserve squalene epoxidase function (that is, normal ergosterol biosynthesis) in yeast cultures treated with protein inhibitors (for example, terbinafine [27]). Terbinafine resistant *S. cerevisiae* harbouring single amino acid substitutions in the Erg1 protein (either L251F, F402L, F420L or P430S) have already been reported [49]. The economic feasibility of using the *tet07-CYC1* promoter system to harness squalene production on an industrial scale is currently being assessed. Owing to the demand and high commercial value of squalene, it is anticipated that the costs of doxycycline supplementation would likely be offset by those recovered from squalene production. The design and use of alternative yeast promoter systems (such as *GALI*, *CUP1* and *MET3* [[50] for summary]) is possible. However, it is important that the promoter of choice does not have an effect on yeast physiology, and that is what is so attractive about the doxycycline system.

Grass biomass and microbial bioprocess engineering

Grass biomass comprises several fractions (for example, water-soluble sugars, fructans, hemicellulose, cellulose [39]) that could be used as substrates for the production of biofuels and other value-added bio-based compounds. In the present study, 55% of the original fructan was still present in grass juice at the end of the fermentation

Table 4 Sterol composition, dry weight biomass and squalene titre of YUG37-*ERG1* cultured using GJ

DOX ($\mu\text{g mL}^{-1}$)	Sterol composition (mg sterol g^{-1})				Total (mg g^{-1})	Biomass (g L^{-1})	Squalene titre (mg L^{-1})
	^a 14 α -DM	^b 14 α -M	Ergosterol	Squalene			
0	1.09 [0.23]	0.47 [0.16]	3.51 [0.83]	0.19 [0.09]	5.25 [0.35]	4.80 [0.28]	0.88 [0.39]
0.025	0.97 [0.46]	0.27 [0.27]	2.64 [0.40]	3.98 [0.68]	7.85 [0.35]	4.50 [0.28]	18.0 [4.18]
0.05	0.73 [0.21]	0.28 [0.17]	2.00 [0.34]	5.14 [0.25]	8.15 [0.21]	2.25 [0.21]	11.5 [0.53]
0.5	0.31 [0.07]	0.09 [0.01]	2.63 [0.48]	5.92 [0.27]	8.95 [0.15]	1.78 [0.11]	10.5 [1.11]
5	0.10 [0.01]	0.01 [0.01]	1.27 [0.15]	7.89 [0.25]	9.28 [0.11]	1.44 [0.04]	11.4 [0.70]
50	—	—	1.31 [0.46]	7.84 [0.25]	9.15 [0.21]	1.45 [0.07]	11.4 [0.20]
**5	—	—	4.34 [0.07]	2.22 [0.28]	6.55 [0.35]	5.40 [0.14]	12.0 [1.83]
**50	—	—	3.80 [0.37]	2.45 [0.02]	6.25 [0.35]	5.20 [0.14]	12.7 [0.24]

All cultures maintained at 20°C in the Bioscreen. Mean values (n = 3 [\pm SD]); DOX = doxycycline. Maximum squalene content and titre are emboldened. Asterisks indicate sequential production experiments supplemented with additional GJ + DOX after 48 h growth in the absence of DOX. Strikethrough = not detected.

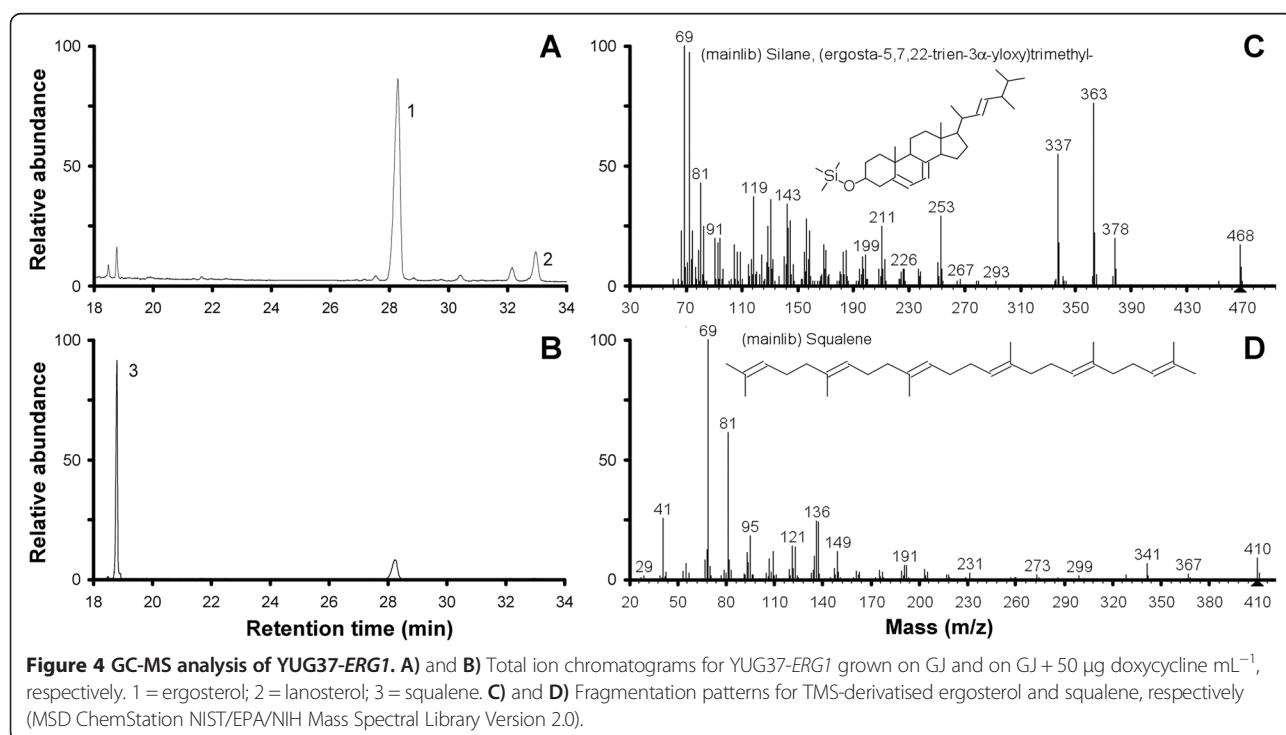
^a = sum of all 14 α -demethylated sterols; ^b = sum of 14 α -methylated sterols.

experiments (Table 3). The enzymatic hydrolysis of fructans in grass juice prior to yeast fermentation experiments has already been reported [37] and recombinant yeast that can simultaneously saccharify and ferment grass fructans to ethanol has recently been achieved [38]. Because simultaneous saccharification and fermentation requires fewer steps than enzyme addition, we envisage further modification of YUG37-*ERG1* to enable utilisation of fructan; this could enhance the efficiency and yields of ethanol and squalene produced from grass juice. Use of alternative yeast species (for example, *S. kudriavzevii* [51]) and existing recombinant industrial

strains (for example, see [52]) that can utilise alternative substrates and agro-industrial feedstocks for the production of squalene and ethanol is also of interest.

Conclusion

Results from this study clearly demonstrate proof of principle that squalene production can be harnessed in *S. cerevisiae* by repressing *ERG1* gene transcription. The potential to co-produce ethanol and squalene (and/or additional bio-based products) from a single feedstock using yeast is realistic and warrants further investigation.



Abbreviations

ATP: adenosine triphosphate; ERG1: squalene epoxidase; GJ: grass juice; GRAS: generally regarded as safe; MgSO₄: magnesium sulphate; OD: optical density; YPD: yeast-peptone-dextrose.

Competing interests

The authors declare that they have no competing interests.

Authors' contributions

CMH performed the experiments, analyzed the results and prepared the initial draft of the manuscript. E.J.L. participated in the sugar analysis. N.J.R. constructed the YUG37-ERG1 strain and contributed to the phenotypic analysis. I.S.D. contributed expertise in grass feedstock and to the draft of the final submission. D.E.K. and S.L.K. conceived and coordinated the study and revised the manuscript. All authors participated in the correction of the manuscript, and approved the final version.

Acknowledgements

Funding for this study was provided by the Biotechnology and Biological Sciences Research Council (2/E13805) and the BEACON Convergence project supported by the Welsh Government from the European Regional Development Fund (ERDF) of the European Union.

Author details

¹Institute of Life Science, College of Medicine, Swansea University, Swansea, Wales SA2 8PP, UK. ²School of Chemistry, Cardiff University, Cardiff, Wales CF10 3AT, UK. ³Institute of Biological, Environmental & Rural Sciences, Aberystwyth University, Gogerddan, Aberystwyth, Wales SY23 3EE, UK.

Received: 29 January 2014 Accepted: 29 August 2014

Published online: 24 September 2014

References

1. Dashtban M, Schraft H, Qin W: Fungal bioconversion of lignocellulosic residues; opportunities & perspectives. *Int J Biol Sci* 2009, **5**:578–595.
2. Kumar P, Barrett DM, Delwiche MJ, Stroeve P: Methods for pretreatment of lignocellulosic biomass for efficient hydrolysis and biofuel production. *Ind Eng Chem Res* 2009, **48**:3713–3729.
3. Margeot A, Hahn-Hägerdal B, Edlund M, Slade R, Monot F: New improvements for lignocellulosic ethanol. *Curr Opin Biotechnol* 2009, **20**:372–380.
4. Matsushika A, Inoue H, Kodaki T, Sawayama S: Ethanol production from xylose in engineered *Saccharomyces cerevisiae* strains: current state and perspectives. *Appl Microbiol Biotechnol* 2009, **84**:37–53.
5. Wiedemann B, Boles E: Codon-optimized bacterial genes improve L-arabinose fermentation in recombinant *Saccharomyces cerevisiae*. *Appl Environ Microbiol* 2008, **74**:2043–2050.
6. Chi C, Zhang Z, Ge W, Jameel H: The relationship between two methods for evaluating five-carbon sugars in eucalyptus extraction liquor. *BioResources* 2009, **4**:537–543.
7. Abbott DA, Zelle RM, Jack T, Pronk JT, Van Maris AJA: Metabolic engineering of *Saccharomyces cerevisiae* for production of carboxylic acids: current status and challenges. *FEMS Yeast Res* 2009, **9**(8):1123–1136.
8. Pirkov I, Albers E, Norbeck J, Larsson C: Ethylene production by metabolic engineering of the yeast *Saccharomyces cerevisiae*. *Metab Eng* 2008, **10**:276–280.
9. Thomsen MH, Hauggaard-Nielsen H, Petersson A, Thomsen AB, Jensen ES: Sustainable bioethanol production combining biorefinery principles and intercropping strategies. Energy solutions for sustainable development. *Risø International Energy Conference*; 2007:22–24.
10. Zhang Y, Du H, Qian X, Chen EY-X: Ionic liquid – water mixtures: enhanced Kw for efficient cellulosic biomass conversion. *Energy Fuels* 2010, **4**:2410–2417.
11. Trichopoulou A, Lagiou P, Kuper H, Trichopoulos D: Cancer and Mediterranean dietary traditions. *Cancer Epidemiol Biomarkers Prev* 2000, **9**(9):869–873.
12. Huang Z-R, Lin Y-K, Fang J-Y: Biological and pharmacological activities of squalene and related compounds: potential uses in cosmetic dermatology. *Molecules* 2009, **14**(1):540–554.
13. Fox CB: Squalene emulsions for parenteral vaccine and drug delivery. *Molecules* 2009, **14**(9):3286–3312.
14. Reddy LH, Couvreur P: Squalene: a natural triterpene for use in disease management and therapy. *Adv Drug Deliv Rev* 2009, **61**(15):1412–1426.
15. Ourisson G, Rohmer M, Poralla K: Prokaryotic hopanoids and other polyterpenoid sterol surrogates. *Annu Rev Microbiol* 1987, **41**:301–333.
16. Spanova M, Daum G: Squalene - biochemistry, molecular biology, process biotechnology, and applications. *Eur J Lipid Sci Technol* 2011, **113**(11):1299–1320.
17. Newmark HL: Squalene, olive oil, and cancer risk: review and hypothesis. *Ann N Y Acad Sci* 1999, **889**:193–203.
18. Owen RW, Mier W, Giacosa A, Hull WE, Spiegelhalter B, Bartsch H: Phenolic compounds and squalene in olive oils: the concentration and antioxidant potential of total phenols, simple phenols, secoiridoids, lignans and squalene. *Food Chem Toxicol* 2000, **38**(8):647–659.
19. Gershbein LL, Singh EJ: Hydrocarbons of dogfish and cod livers and herring oil. *J Am Oil Chem Soc* 1969, **46**(10):554–557.
20. Catchpole OJ, von Kamp JC, Grey JB: Extraction of squalene from shark liver oil in a packed column using supercritical carbon dioxide. *Ind Eng Chem Res* 1997, **36**(10):4318–4324.
21. Parks LW: Metabolism of sterols in yeast. *CRC Crit Rev Microbiol* 1978, **6**(4):301–341.
22. Daum G, Lees ND, Bard M, Dickson R: Biochemistry, cell biology and molecular biology of lipids of *Saccharomyces cerevisiae*. *Yeast* 1998, **14**(16):1471–1510.
23. Daum G, Tuller G, Nemeč T, Hraštnik C, Balliano G, Cattel L, Milla P, Rocco F, Conzelmann A, Vionnet C, Kelly DE, Kelly S, Schweizer E, Schuller HJ, Hojad U, Greiner E, Finger K: Systematic analysis of yeast strains with possible defects in lipid metabolism. *Yeast* 1999, **15**(7):601–614.
24. Lees ND, Bard M, Kirsch DR: Biochemistry and molecular biology of sterol synthesis in *Saccharomyces cerevisiae*. *Crit Rev Biochem Mol Biol* 1999, **34**(1):33–47.
25. Kamimura K, Hidaka M, Masaki H, Uozumi T: Construction of squalene-accumulating *Saccharomyces cerevisiae* mutants by gene disruption through homologous recombination. *Appl Microbiol Biotechnol* 1994, **42**(2–3):353–357.
26. Mantzouridou F, Tsimidou MZ: Observations on squalene accumulation in *Saccharomyces cerevisiae* due to the manipulation of *HMG2* and *ERG6*. *FEMS Yeast Res* 2010, **10**(6):699–707.
27. Naziri E, Mantzouridou F, Tsimidou MZ: Enhanced squalene production by wild-type *Saccharomyces cerevisiae* strains using safe chemical means. *J Agric Food Chem* 2011, **59**(18):9980–9989.
28. Daum G, Glatz H, Paltauf F: Lipid metabolism in an inositol deficient yeast, *Saccharomyces carlsbergensis*: influence of temperature and anaerobiosis on cellular lipid composition. *Biochim Biophys Acta* 1977, **488**(3):484–492.
29. Mantzouridou F, Naziri E, Tsimidou MZ: Squalene versus ergosterol formation using *Saccharomyces cerevisiae*: combined effect of oxygen supply, inoculum size, and fermentation time on yield and selectivity of the bioprocess. *J Agric Food Chem* 2009, **57**(14):6189–6198.
30. Gollub EG, Liu K, Dayan J, Adlersberg M, Sprinson DB: Yeast mutants deficient in heme biosynthesis and a heme mutant additionally blocked in cyclization of 2,3-oxidosqualene. *J Biol Chem* 1977, **252**(9):2846–2854.
31. Spanova M, Zweytick D, Lohner K, Klug L, Leitner E, Hermetter A, Daum G: Influence of squalene on lipid particle/droplet and membrane organization in the yeast *Saccharomyces cerevisiae*. *Biochim Biophys Acta* 2012, **1821**(4):647–653.
32. Jandrositz A, Turnowsky F, Hogenauer G: The gene encoding squalene epoxidase from *Saccharomyces cerevisiae* – cloning and characterization. *Gene* 1991, **107**(1):155–160.
33. Landl KM, Klosch B, Turnowsky F: ERG1, encoding squalene epoxidase, is located on the right arm of chromosome VII of *Saccharomyces cerevisiae*. *Yeast* 1996, **12**(6):609–613.
34. Jahnke L, Klein HP: Oxygen requirements for formation and activity of the squalene epoxidase in *Saccharomyces cerevisiae*. *J Bacteriol* 1983, **155**(2):488–492.
35. Garí E, Piedrafita L, Aldea M, Herrero E: A set of vectors with a tetracycline-regulatable promoter system for modulated gene expression in *Saccharomyces cerevisiae*. *Yeast* 1997, **13**(9):837–848.
36. Groeneveld P, Rolley N, Kell DB, Kelly SL, Kelly DE: Metabolic control analysis and engineering of the yeast sterol biosynthetic pathway. *Mol Biol Rep* 2002, **29**(1–2):27–29.
37. Martel CM, Warrilow AGS, Jackson CJ, Mullins JGL, Togawa RC, Parker JE, Morris MS, Donnison IS, Kelly DE, Kelly SL: Expression, purification and use

- of the soluble domain of *Lactobacillus paracasei* beta-fructosidase to optimise production of bioethanol from grass fructans. *Bioresour Technol* 2010, **101**(12):4395–4402.
38. Martel CM, Parker JE, Jackson CJ, Warrilow AGS, Rolley N, Greig C, Morris SM, Donnison IS, Kelly DE, Kelly SL: **Expression of bacterial levanase in yeast enables simultaneous saccharification and fermentation of grass juice to bioethanol.** *Bioresour Technol* 2011, **102**(2):1503–1508.
 39. Charlton A, Elias R, Fish S, Fowler P, Gallagher J: **The biorefining opportunities in Wales: understanding the scope for building a sustainable, biorenewable economy using plant biomass.** *Chem Eng Res Design* 2009, **87**(9):1147–1161.
 40. Farrar K, Bryant DN, Turner L, Gallagher JA, Thomas A, Farrell M, Humphreys MO, Donnison IS: **Breeding for bio-ethanol production in *Lolium perenne* L.: association of allelic variation with high water-soluble carbohydrate content.** *Bioresour Technol* 2012, **5**:149–157.
 41. Kyazze G, Dinsdale R, Hawkes FR, Guwy AJ, Premier GC, Donnison IS: **Direct fermentation of fodder maize, chicory fructans and perennial ryegrass to hydrogen using mixed microflora.** *Bioresour Technol* 2008, **99**:8833–8839.
 42. Martel CM, Parker JE, Warrilow AGS, Rolley NJ, Kelly SL, Kelly DE: **Complementation of a *Saccharomyces cerevisiae* ERG11/CYP51 (sterol 14 α -demethylase) doxycycline-regulated mutant and screening of the azole sensitivity of *Aspergillus fumigatus* isoenzymes CYP51A and CYP51B.** *Antimicrob Agents Chemother* 2010, **54**(11):4920–4923.
 43. Martel CM, Parker JE, Bader O, Weig M, Gross U, Warrilow AGS, Kelly DE, Kelly SL: **A clinical isolate of *Candida albicans* with mutations in ERG11 (encoding sterol 14 α -demethylase) and ERG5 (encoding C22-desaturase) is cross resistant to azoles and amphotericin B.** *Antimicrob Agents Chemother* 2010, **54**(9):3578–3583.
 44. Martel CM, Parker JE, Bader O, Weig M, Gross U, Warrilow AGS, Rolley N, Kelly DE, Kelly SL: **Identification and characterization of four azole resistant *erg3* mutants of *Candida albicans*.** *Antimicrob Agents Chemother* 2010, **54**(11):4527–4533.
 45. Bai FW, Anderson WA, Moo-Young M: **Ethanol fermentation technologies from sugar and starch feedstocks.** *Biotechnol Adv* 2008, **26**(1):89–105.
 46. Choi G-W, Kang H-W, Moon S-K: **Repeated-batch fermentation using flocculent hybrid, *Saccharomyces cerevisiae* CHFY0321 for efficient production of bioethanol.** *Appl Microbiol Biotechnol* 2009, **84**(2):261–269.
 47. Duarte J, Lourenço V, Ribeiro B, Saagua M, Pereira J, Baeta-Hall L: **Ethanol Production from Different Substrates by a Flocculent *Saccharomyces cerevisiae* Strain.** *Int J Chem Reactor Eng* 2009, **7**(1):ISSN (Online) 1542–6580.
 48. Li Q, Zhao X-Q, Chang AK, Zhang Q-M, Bai F-W: **Ethanol-induced yeast flocculation directed by the promoter of *TPS1* encoding trehalose-6-phosphate synthase 1 for efficient ethanol production.** *Metab Eng* 2012, **14**(1):1–8.
 49. Leber R, Fuchsichler S, Klobučniková V, Schweighofer N, Pitters E, Wohlfarter K, Lederer M, Landl K, Ruckstuhl C, Hapala I, Turnowsky F: **Molecular mechanism of terbinafine resistance in *Saccharomyces cerevisiae*.** *Antimicrob Agents Chemother* 2003, **47**(12):3890–3900.
 50. Koller A, Valesco J, Subramani S: **The CUP I promoter of *Saccharomyces cerevisiae* is inducible by copper in *Pichia pastoris*.** *Yeast* 2000, **16**:651–656.
 51. Tronchoni J, Rozes N, Querol A, Manuel Guillamon J: **Lipid composition of wine strains of *Saccharomyces kudriavzevii* and *Saccharomyces cerevisiae* grown at low temperature.** *Int J Food Microbiol* 2012, **155**(3):191–198.
 52. Yan GL, Liang HY, Duan CQ, Han BZ: **Enhanced production of beta-Carotene by recombinant industrial wine yeast using grape juice as substrate.** *Curr Microbiol* 2012, **64**(2):152–158.

doi:10.1186/s13068-014-0133-7

Cite this article as: Hull *et al.*: Co-production of ethanol and squalene using a *Saccharomyces cerevisiae* ERG1 (squalene epoxidase) mutant and agro-industrial feedstock. *Biotechnology for Biofuels* 2014 **7**:133.

Submit your next manuscript to BioMed Central and take full advantage of:

- Convenient online submission
- Thorough peer review
- No space constraints or color figure charges
- Immediate publication on acceptance
- Inclusion in PubMed, CAS, Scopus and Google Scholar
- Research which is freely available for redistribution

Submit your manuscript at
www.biomedcentral.com/submit

