

Aberystwyth University

A near 90-year record of the evolution of El Morado Glacier and its proglacial lake, Central Chilean Andes

Fariás-Barahona, David; Wilson, Ryan; Bravo, Claudio; Vivero, Sebastián; Caro, Alexis; Shaw, Thomas E.; Casassa, Gino; Ayala, Álvaro; Mejiás, Alonso; Harrison, Stephan; Glasser, Neil F.; McPhee, James; Wünderlich, Olaf; Braun, Matthias H.

Published in:
Journal of Glaciology

DOI:
[10.1017/jog.2020.52](https://doi.org/10.1017/jog.2020.52)

Publication date:
2020

Citation for published version (APA):

Fariás-Barahona, D., Wilson, R., Bravo, C., Vivero, S., Caro, A., Shaw, T. E., Casassa, G., Ayala, Á., Mejiás, A., Harrison, S., Glasser, N. F., McPhee, J., Wünderlich, O., & Braun, M. H. (2020). A near 90-year record of the evolution of El Morado Glacier and its proglacial lake, Central Chilean Andes. *Journal of Glaciology*, 66(259), 846-860. <https://doi.org/10.1017/jog.2020.52>

Document License
CC BY

General rights

Copyright and moral rights for the publications made accessible in the Aberystwyth Research Portal (the Institutional Repository) are retained by the authors and/or other copyright owners and it is a condition of accessing publications that users recognise and abide by the legal requirements associated with these rights.

- Users may download and print one copy of any publication from the Aberystwyth Research Portal for the purpose of private study or research.
- You may not further distribute the material or use it for any profit-making activity or commercial gain
- You may freely distribute the URL identifying the publication in the Aberystwyth Research Portal

Take down policy

If you believe that this document breaches copyright please contact us providing details, and we will remove access to the work immediately and investigate your claim.

tel: +44 1970 62 2400
email: is@aber.ac.uk

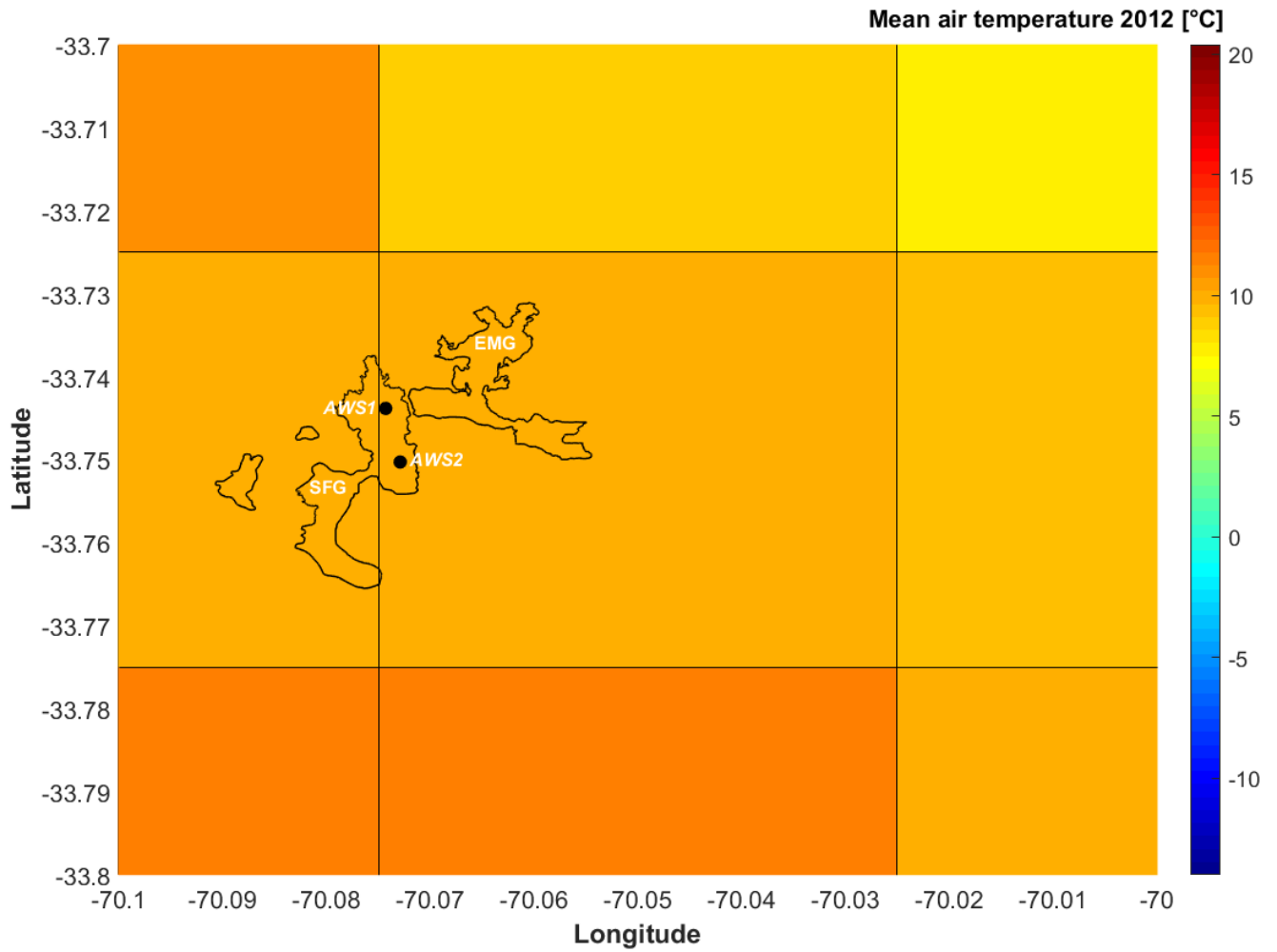


Figure S1. CR2MET air temperature grid and glacier outlines of the San Francisco Glacier (SFG) and El Morado Glacier (EMG). The Automatic Weather Station 1 (AWS1) and 2 (AWS) are both located over the SFG.

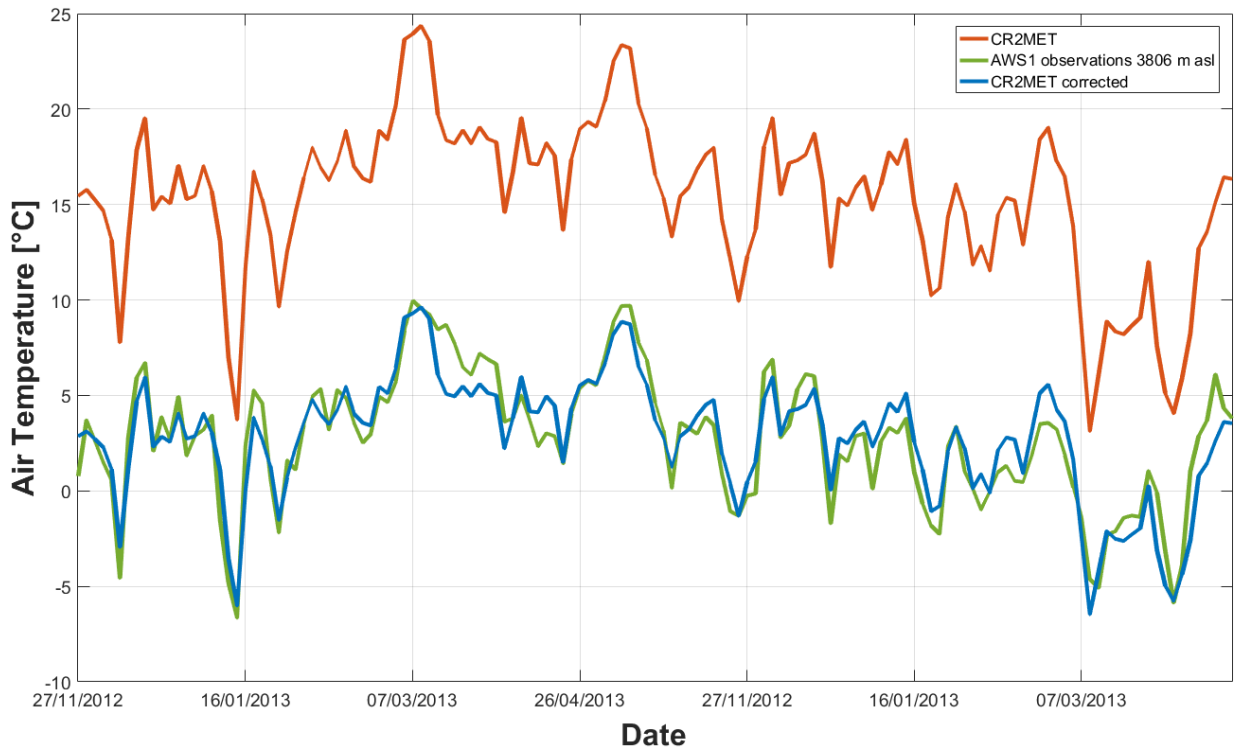


Figure S2. Time series of the observed (AWS1), estimated (CR2MET) and corrected daily air temperature at the location of the AWS1.

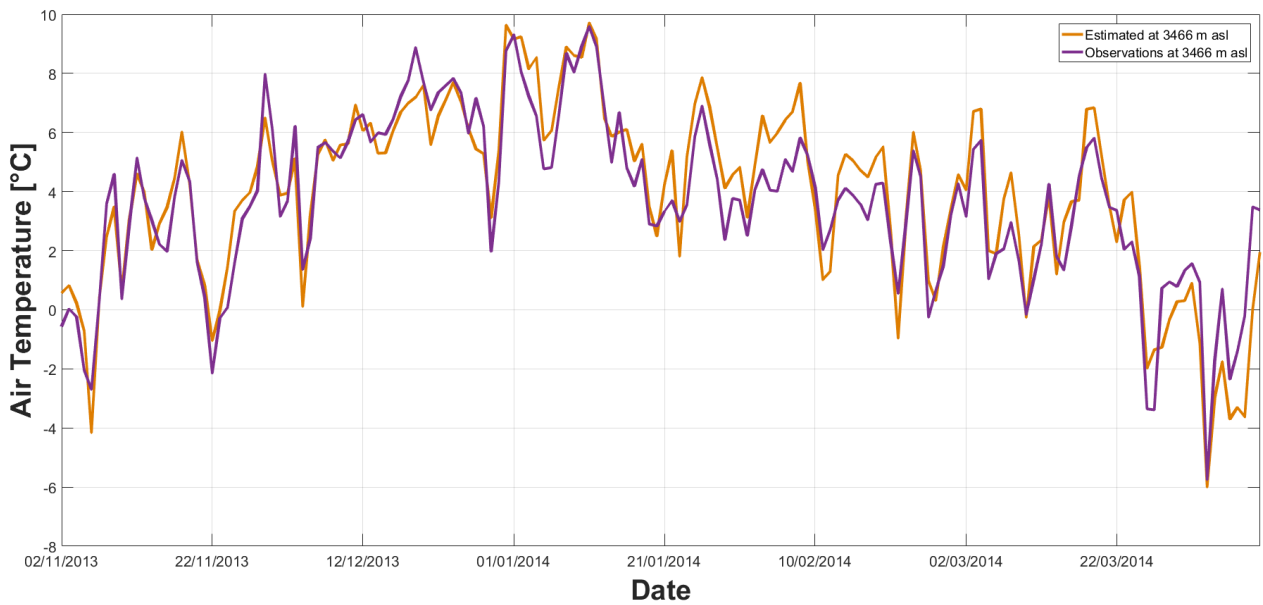


Figure S3. Daily air temperature time series from observations at AWS2 and estimation after correction using CR2MET data at the same location.

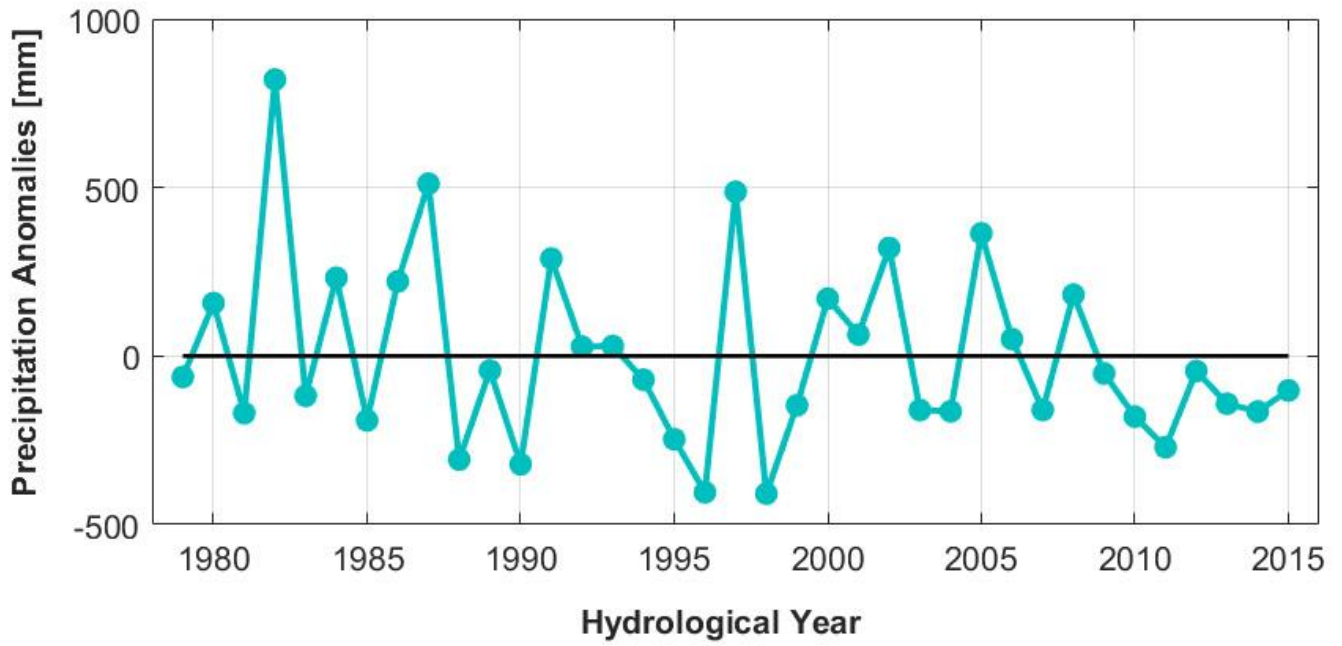


Figure S4. CR2MET annual precipitation anomalies during the 1979-2015 period at the location of the El Morado Glacier (EMG)

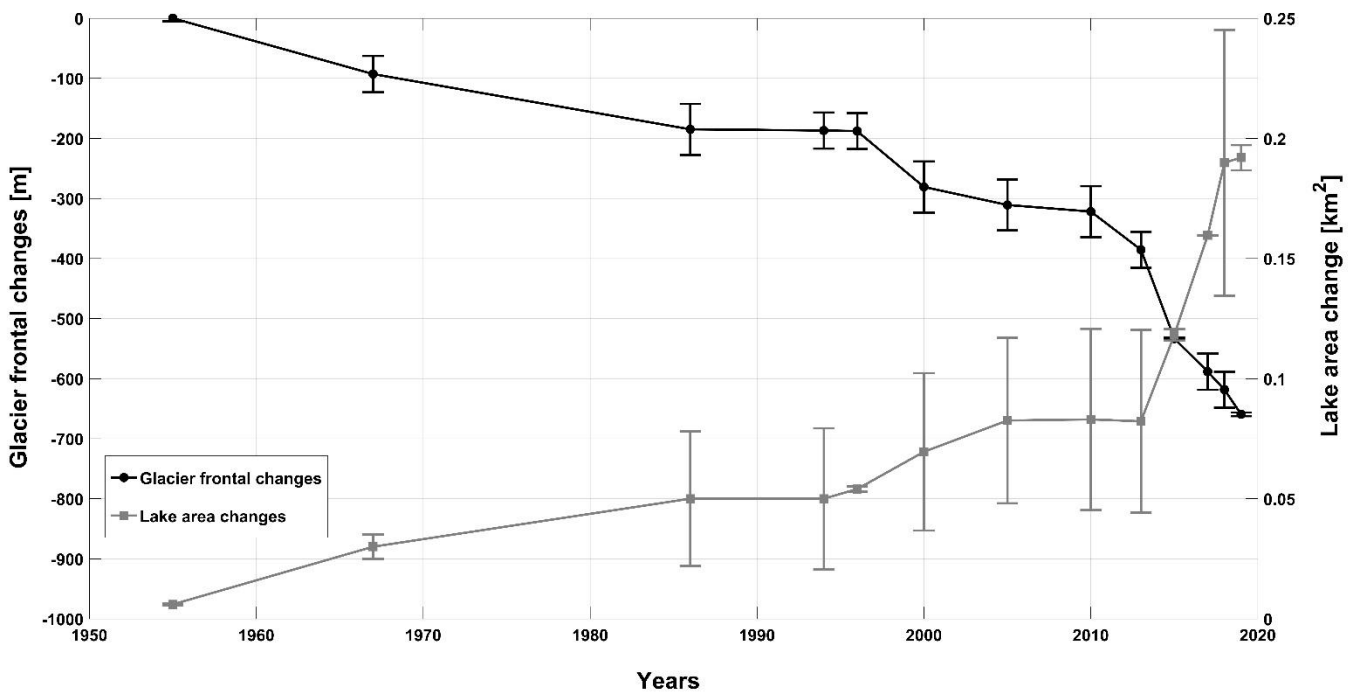


Figure S5. Comparison between glacier frontal changes and proglacial lake changes.

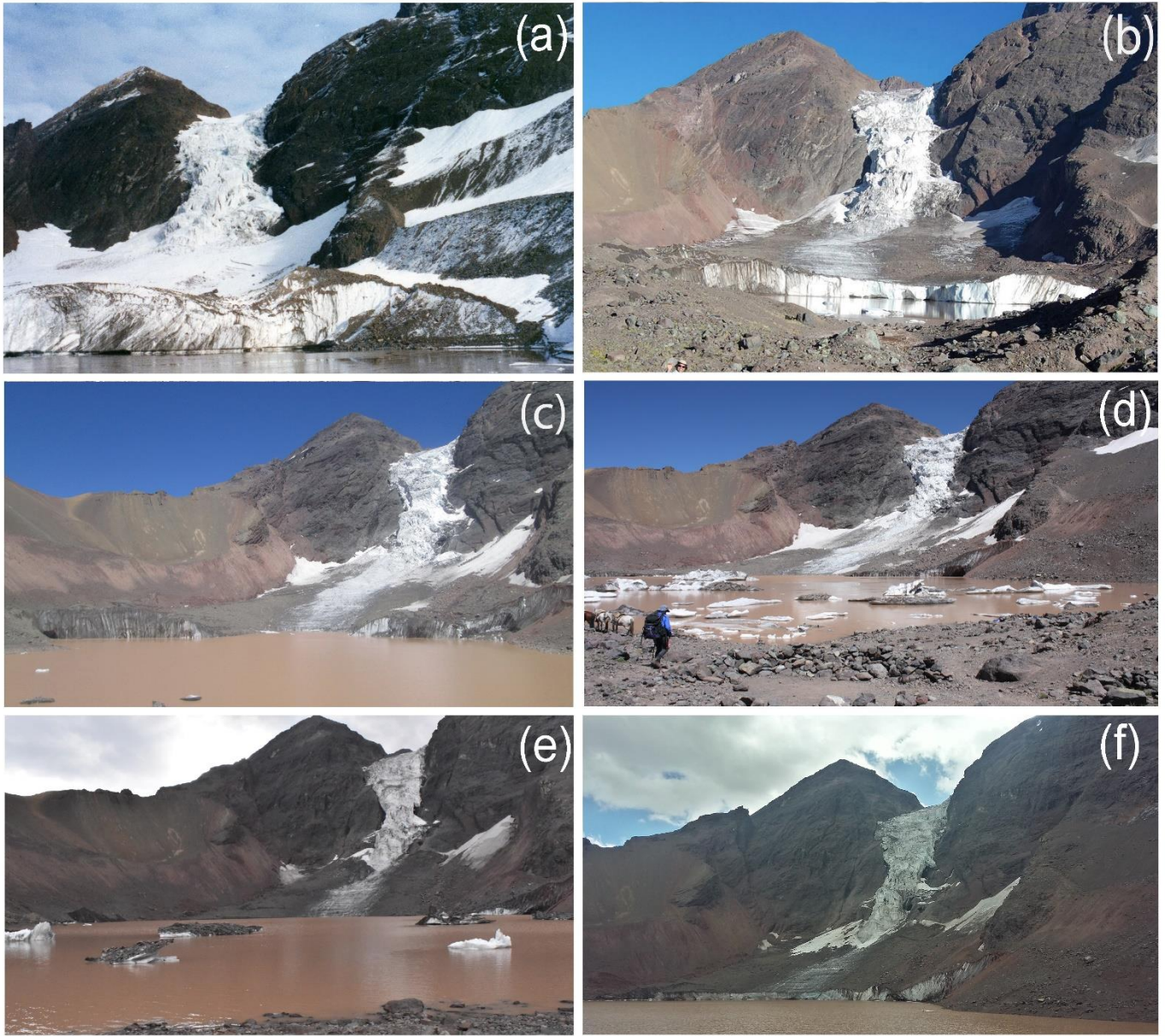


Figure S6. Photographs of El Morado Glacier front and proglacial lake between 2003 and 2009. (a) Corresponds 2003, (b) 2009 (Photo: Guillermo Azocar), (c) 2015, (d) 2017, (e) 2018, (f) 2019.

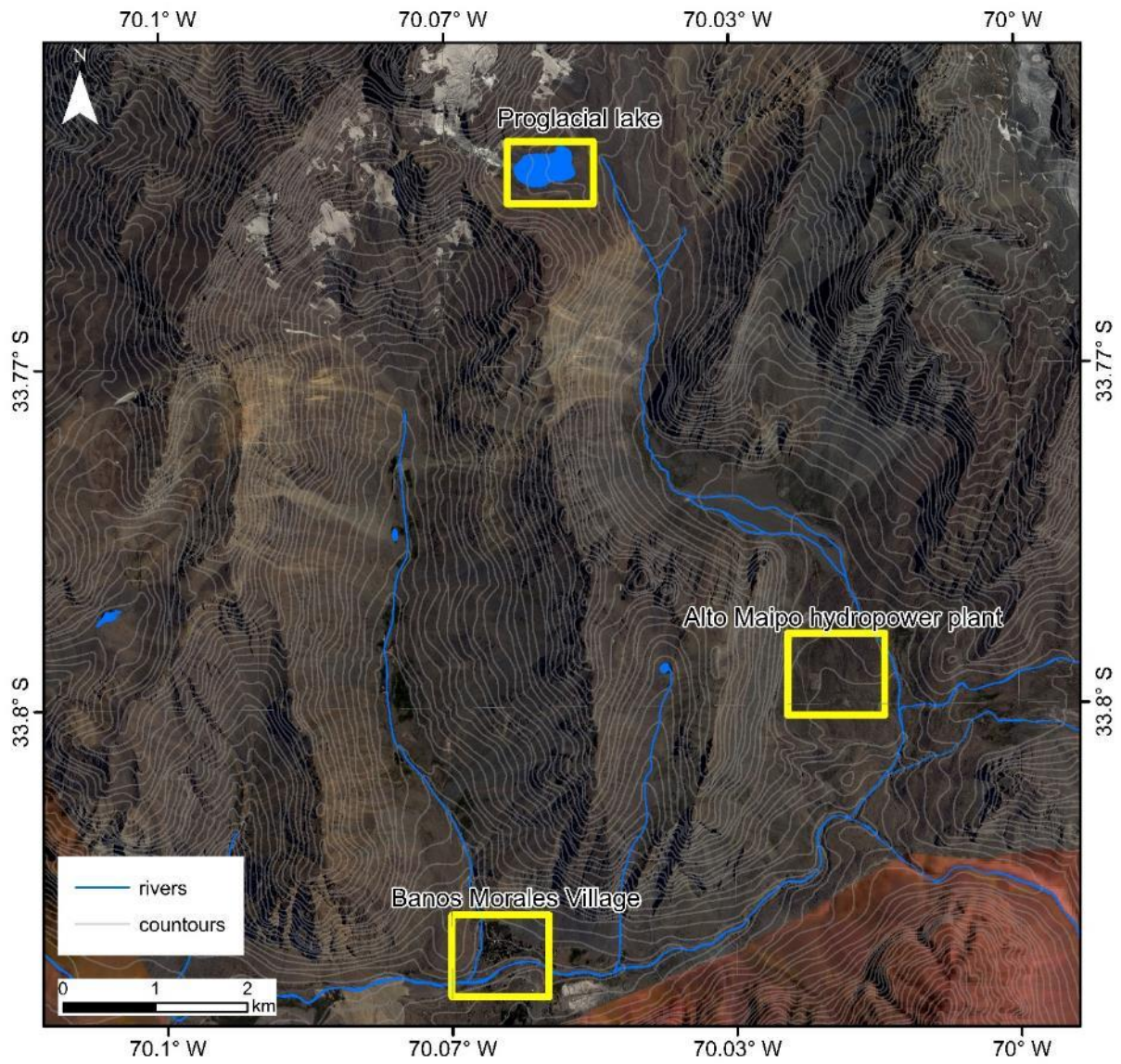


Figure S7. Location of the study area (Proglacial lake), Baños Morales village and hydropower infrastructure. Background: SPOT 6 satellite image (2015).