

## Aberystwyth University

### *Expression of FIHMA3, a P<sub>1</sub>B<sub>2</sub>-ATPase from Festulolium loliaceum, correlates with response to cadmium stress*

Guo, Qiang; Meng, Lin; Humphreys, Mike W.; Scullion, John; Mur, Luis A.J.

*Published in:*

Plant Physiology and Biochemistry

*DOI:*

[10.1016/j.plaphy.2017.01.013](https://doi.org/10.1016/j.plaphy.2017.01.013)

*Publication date:*

2017

*Citation for published version (APA):*

Guo, Q., Meng, L., Humphreys, M. W., Scullion, J., & Mur, L. A. J. (2017). Expression of FIHMA3, a P<sub>1</sub>B<sub>2</sub>-ATPase from *Festulolium loliaceum*, correlates with response to cadmium stress. *Plant Physiology and Biochemistry*, 112, 270-277. <https://doi.org/10.1016/j.plaphy.2017.01.013>

#### Document License

CC BY

#### General rights

Copyright and moral rights for the publications made accessible in the Aberystwyth Research Portal (the Institutional Repository) are retained by the authors and/or other copyright owners and it is a condition of accessing publications that users recognise and abide by the legal requirements associated with these rights.

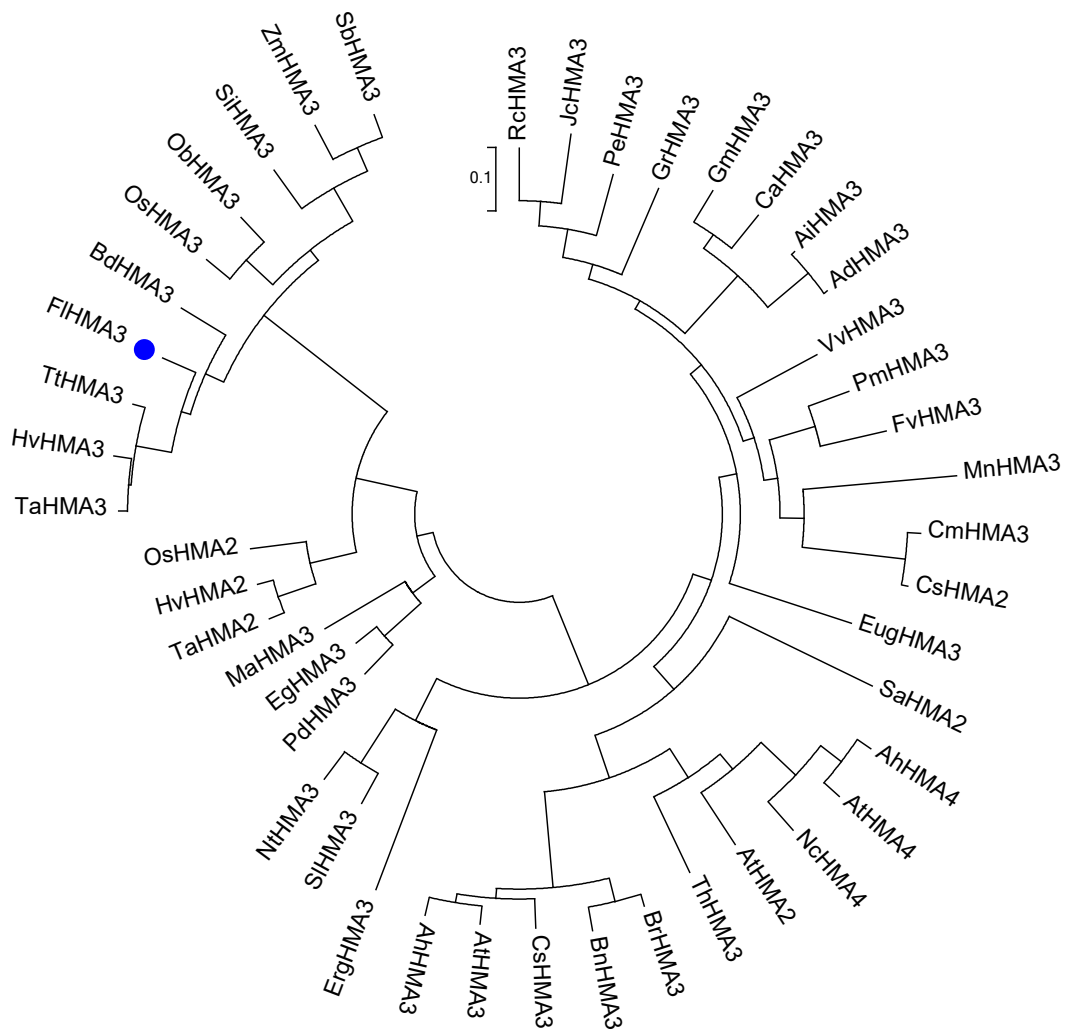
- Users may download and print one copy of any publication from the Aberystwyth Research Portal for the purpose of private study or research.
- You may not further distribute the material or use it for any profit-making activity or commercial gain
- You may freely distribute the URL identifying the publication in the Aberystwyth Research Portal

#### Take down policy

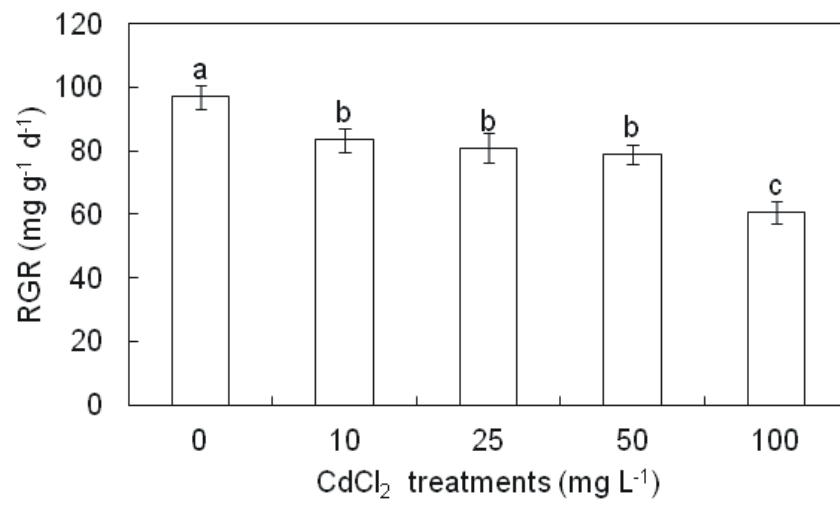
If you believe that this document breaches copyright please contact us providing details, and we will remove access to the work immediately and investigate your claim.

tel: +44 1970 62 2400

email: [is@aber.ac.uk](mailto:is@aber.ac.uk)



**Supplementary Fig. 1**



**Supplementary Fig. 2**

## Supplementary Table 1

Primer sequences used in the experiments

Primer	Sequence (5'-3')
P1	ATCAACRTYCTSATGCTYATCGC
P2	GGTGATSGTSCCGGTCTTGTCGA
P3	GGTTACATTGCCGTGAGGACGAC
P4	TCGACAAGACCGGCACCATCACC
P5	GGGGAATTCATGACGGACGGTGGCGAGAAC
P6	GGGGGTACCGTTTCACCAGAGCAGCATCCT
P7	GCTCAACCTGGACGGTTACA
P8	AACCATCGCTCCAGATCACC
A1	TCGAGACTGCGAAGAGTAGC
A2	TCCATGCCGATGATGGAAGG