

Aberystwyth University

Deep phylogeographic structure may indicate cryptic species within the Sparid genus Spondyllosoma

McKeown, Niall; Gwilliam, Michael; Healey, Amy; Skujina, Ilze; Potts, Warren; Sauer, W. H. H.; Shaw, Paul

Published in:

Journal of Fish Biology

DOI:

[10.1111/jfb.14316](https://doi.org/10.1111/jfb.14316)

Publication date:

2020

Citation for published version (APA):

McKeown, N., Gwilliam, M., Healey, A., Skujina, I., Potts, W., Sauer, W. H. H., & Shaw, P. (2020). Deep phylogeographic structure may indicate cryptic species within the Sparid genus *Spondyllosoma*. *Journal of Fish Biology*, 96(6), 1434-1443. <https://doi.org/10.1111/jfb.14316>

Document License

CC BY

General rights

Copyright and moral rights for the publications made accessible in the Aberystwyth Research Portal (the Institutional Repository) are retained by the authors and/or other copyright owners and it is a condition of accessing publications that users recognise and abide by the legal requirements associated with these rights.

- Users may download and print one copy of any publication from the Aberystwyth Research Portal for the purpose of private study or research.
- You may not further distribute the material or use it for any profit-making activity or commercial gain
- You may freely distribute the URL identifying the publication in the Aberystwyth Research Portal

Take down policy

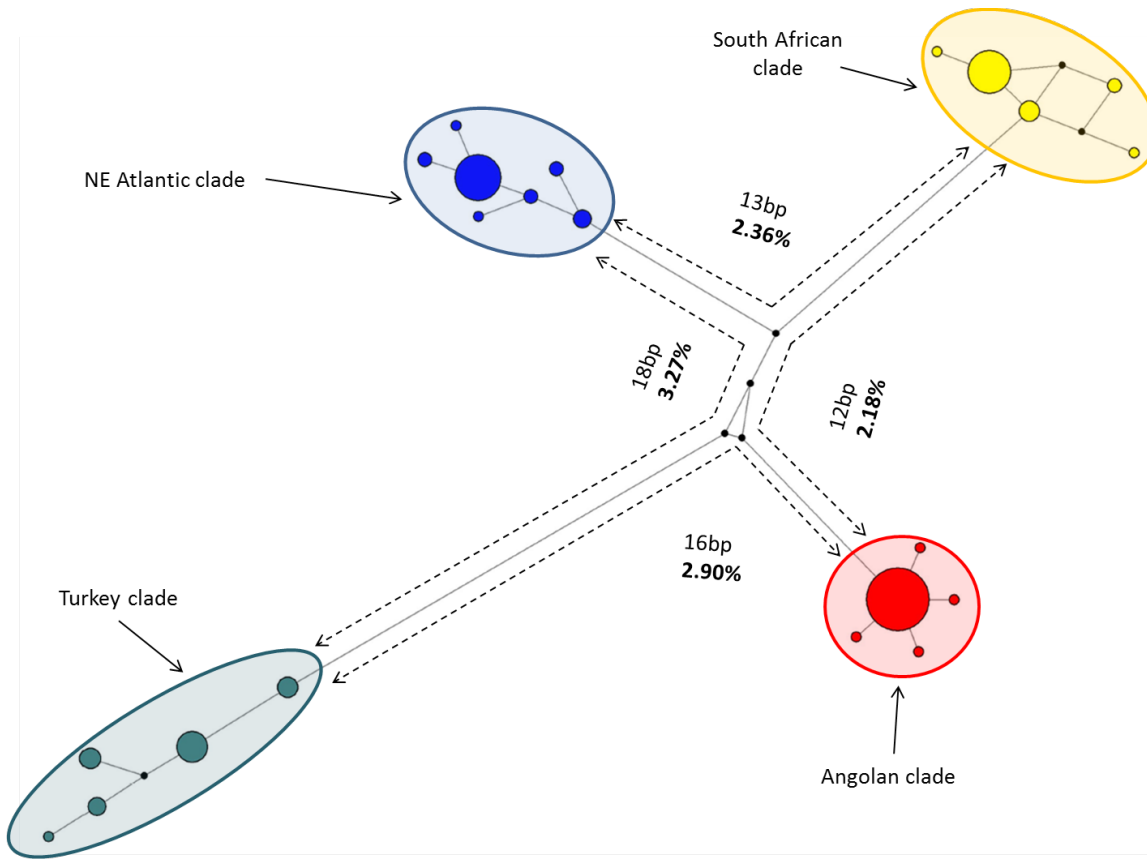
If you believe that this document breaches copyright please contact us providing details, and we will remove access to the work immediately and investigate your claim.

tel: +44 1970 62 2400

email: is@aber.ac.uk

Supplementary Table 1: Overview of published loci tested for transferability in *Spondyliosoma* spp.

Locus	Target species	Reference	Forward primer	Reverse primers
DsaMS16	<i>Diplodus sargus</i>	Perez et al. (2008)	AGTCAAACCTCGGCATCAAGCGGGTA	ACGAGGAGCTCTGACTTCTGATTCTT
DsaMS27	<i>Diplodus sargus</i>	Perez et al. (2008)	GCTCACTGTGCTGGCTCCACATCACC	GCGCTGTGCTTGCTGTCCGGAGA
DsaMS34	<i>Diplodus sargus</i>	Perez et al. (2008)	AGATCAGATTTGCTGTGATAGCGTCCAAAG	ACTCCTGCAGCTCCTCCTGGGCTTC
DsaMS48	<i>Diplodus sargus</i>	Perez et al. (2008)	ACATCGCACACCCCCACAACC	TGCATGAACAACCTCCACACACAACTCC
Dvul33	<i>Diplodus vulagris</i>	Roques et al. (2007a)	GCCGGGCTCGACATTGACACTGAA	GCAGCCAGCAGAGCTTAAAGAACT
Dvul38	<i>Diplodus vulagris</i>	Roques et al. (2007a)	TCGGGCACAGATAGAAAGAAACAC	GAAGGAAGACGGATCTCAGGATGA
Dvul4	<i>Diplodus vulagris</i>	Roques et al. (2007a)	GCGGTTATGTATACGTTGCGTTTA	TTGGCGTTGAACAGAAGTCAGACA
Dvul61	<i>Diplodus vulagris</i>	Roques et al. (2007a)	TGGGGACTCTCAGAATCATCACAA	TGGAAAAAGCCCTCTGGACAAAAG
Dvul84	<i>Diplodus vulagris</i>	Roques et al. (2007a)	GCTCGACGTGCACTCTGCCCTTGA	ATTCCCCAAATCCAGCACTCACAT
LM12	<i>Lithognathus mormyrus</i>	Sala-Bozano et al. (2009)	ACGGTATGGAGTCAACTGC	GAGTGTTTCTGACAGGATGAGAAC
LM19	<i>Lithognathus mormyrus</i>	Sala-Bozano et al. (2009)	AAACACACCTTCCCTCTCTCT	AGCTGCTCAAACAGGCTATGA
LM68	<i>Lithognathus mormyrus</i>	Sala-Bozano et al. (2009)	CTTCAGGGGCGTTTTCAGC	ACCAGGACAGGACCAGGTG
LM72	<i>Lithognathus mormyrus</i>	Sala-Bozano et al. (2009)	ATTGCAGACATGTCAGATGC	TATGCTCTAATGGCAATGCTC
LM86	<i>Lithognathus mormyrus</i>	Sala-Bozano et al. (2009)	ACTGCTGGCCTCTCTTTTGA	TGCCTCGTAATCCTCCACTT
Omel20	<i>Oblada melanura</i>	Roques et al. (2007b)	CAGGGTAGCAACAGGGTAACAATG	GGCGGTTGAGGACACTGCAAAAAA
Omel38	<i>Oblada melanura</i>	Roques et al. (2007b)	AGCCGGCTGAGCTCCATAATAACC	TGCCCTCTTGTCACACCAGGTAC
Omel58	<i>Oblada melanura</i>	Roques et al. (2007b)	GGCATTATTGTTCCATCATTACTCC	ATGGCATAACAACCTGCATCAGAAG
Omel61	<i>Oblada melanura</i>	Roques et al. (2007b)	CAGCGGGGGATTAATCTGCATTG	GCCCGATTTATCTTCATCACCCAT



Supplementary

Figure 1. Median-joining haplotype network for *Spondyliosoma spp.* based on 550bp of mtDNA COI. Node sizes are proportional to the observed number of individuals bearing that haplotype, with the smallest nodes representing a single individual. Predicted missing (or extinct) haplotypes are represented by small black nodes. Defined clades are encircled.