

Aberystwyth University

*Reduced soil respiration beneath invasive *Rhododendron ponticum* persists after cutting and is related to substrate quality rather than microbial community*

Jones, Gruffydd Lloyd; Scullion, John; Allison, Gordon; Stott, Heather ; Johnson, Dave; Owen, Rhys; Williams, Geraint; Gwynn-Jones, D.

Published in:

Soil Biology and Biochemistry

DOI:

[10.1016/j.soilbio.2019.107577](https://doi.org/10.1016/j.soilbio.2019.107577)

Publication date:

2019

Citation for published version (APA):

Jones, G. L., Scullion, J., Allison, G., Stott, H., Johnson, D., Owen, R., Williams, G., & Gwynn-Jones, D. (2019). Reduced soil respiration beneath invasive *Rhododendron ponticum* persists after cutting and is related to substrate quality rather than microbial community. *Soil Biology and Biochemistry*, 138, [107577]. <https://doi.org/10.1016/j.soilbio.2019.107577>

Document License

CC BY-NC-ND

General rights

Copyright and moral rights for the publications made accessible in the Aberystwyth Research Portal (the Institutional Repository) are retained by the authors and/or other copyright owners and it is a condition of accessing publications that users recognise and abide by the legal requirements associated with these rights.

- Users may download and print one copy of any publication from the Aberystwyth Research Portal for the purpose of private study or research.
- You may not further distribute the material or use it for any profit-making activity or commercial gain
- You may freely distribute the URL identifying the publication in the Aberystwyth Research Portal

Take down policy

If you believe that this document breaches copyright please contact us providing details, and we will remove access to the work immediately and investigate your claim.

tel: +44 1970 62 2400
email: is@aber.ac.uk

1 **Reduced soil respiration beneath invasive *Rhododendron ponticum* persists after cutting and is**
2 **related to substrate quality rather than microbial community.**

3

4 **Gruffydd Lloyd Jones¹, John Scullion¹, Gordon Allison¹, Heather Stott², David Johnson², Rhys**
5 **Owen³, Geraint Williams³ and Dylan Gwynn-Jones^{1*}**

6

7 **1 – IBERS, Aberystwyth University, Penglais Campus, Aberystwyth, Ceredigion. SY23 3DA, UK.**

8 **2 – School of Earth and Environmental Sciences, The University of Manchester. M13 9PT, UK.**

9 **3 – Snowdonia National Park Authority, National Park Office, Penrhyndeudraeth, Gwynedd.**

10 **LL48 6LF, UK.**

11

12

13 Address for correspondence: Dylan Gwynn-Jones, Tel +44(0)1970 622318; E-mail

14 dyj@aber.ac.uk

15 IBERS, F24 Cledwyn Building, Aberystwyth University, Penglais Campus, Aberystwyth,

16 Ceredigion, SY23 3DA, UK.

17

18

19

20

21

22 **Abstract**

23 Invasive plants depositing recalcitrant, polyphenol-rich leaf litter may alter decomposition dynamics,
24 leading to an accumulation of soil organic matter. Removing invasives is critical in restoring native
25 habitats, but our understanding of its impacts upon soil processes remains limited. Here, we test the
26 hypothesis that clearing of *Rhododendron ponticum* leads to increased soil respiration, at a site
27 within Snowdonia National Park, Wales, UK. Soil samples were collected, and soil respiration was
28 monitored over 32 weeks on plots cleared of *R. ponticum*, plots infested with *R. ponticum* which
29 were left uncleared, and uninvaded plots of native vegetation. Soil respiration was significantly
30 higher in native vegetation plots, relative to uncleared plots. Clearing *R. ponticum* led to a short-
31 term (< four weeks) increase in soil respiration relative to uncleared plots and was related to
32 elevated soil temperature post-clearance. However, this respiration response was transient, with no
33 significant difference between cleared and uncleared plots over the whole growing season (32
34 weeks). Declining soil respiration responses to soil warming have been attributed to altered soil
35 microbial communities and substrate limitation. Analysis of microbial phospholipid fatty acids
36 (PLFAs) detected no differences among cleared, native and uncleared plots post-clearance. However,
37 Fourier-transform mid-infrared spectroscopy detected a decline in organic matter aromaticity over
38 the growing season in the native and uncleared plots, whilst there was no change in the cleared
39 plots. The findings show that despite a pulse in soil respiration during the initial four weeks post-
40 clearance, *R. ponticum* litter and associated soil organic matter in cleared plots continued to
41 decompose at a similar rate to uncleared plots over the whole growing season. This was likely a
42 result of substrate limitation and altered soil organic matter composition following *R. ponticum*
43 clearing, with labile carbon becoming depleted and an enrichment of more recalcitrant aromatic
44 structures.

45 **Keywords:** "Invasive"; "soil"; "respiration"; "decomposition"; "PLFAs"; "FTIR"; "soil organic matter".

46

47 **1. Introduction**

48 Invasive plants can alter soil processes such as soil organic matter (SOM) decomposition by
49 depositing high quantities of chemically distinct litter (Suseela et al., 2016; Tamura et al., 2017). The
50 decomposition of leaf litter is determined by three main factors: litter chemical composition, soil
51 physicochemical properties and the microbial community (Jewell et al., 2015). Plant invasions have
52 the potential to alter all three of these factors, with litter chemistry particularly important (Pattison
53 et al., 2016; Suseela et al., 2016; Tamura et al., 2017). Plants adapted for high-nutrient environments
54 produce labile litter which rapidly decomposes and leads to lower soil carbon content post-invasion
55 (Liao et al., 2008; Tamura and Tharayil, 2014). Conversely, plants adapted for low-nutrient
56 environments produce low-quality litter, which is rich in phenolic compounds (Aerts, 1999; DeLuca
57 et al., 2013; Hobbie, 1992). This recalcitrant litter decomposes slowly, leading to altered soil
58 microbial communities, shifts in SOM composition and increased carbon sequestration (Ehrenfeld et
59 al., 2001; Suseela et al., 2016; Tamura and Tharayil, 2014).

60 Altering soil processes may be important for certain invasive shrubs, such as the UK invasive plant
61 *Rhododendron ponticum* L., given that ericaceous species leaf litter strongly influences
62 decomposition dynamics (Aerts, 1997; DeLuca et al., 2013). It is known that related *Rhododendron*
63 spp. produce acidic, polyphenol rich litter which decomposes slowly (Monk et al., 2014; Wurzburger
64 and Hendrick, 2007). Furthermore, tannins leaching from the litter of *Rhododendron* spp. can inhibit
65 microbial activity, form decay-resistant complexes with proteins and inactivate enzymes in the
66 underlying soil (Hättenschwiler and Vitousek, 2000; Horner et al., 1988; Wurzburger and Hendrick,
67 2009). The slow decomposition of *Rhododendron* spp. litter results in the formation of a thick layer
68 of undecomposed litter on the soil surface (Plocher and Carvell, 1987) and an accumulation of SOM
69 (Wurzburger and Hendrick, 2007).

70 Whilst many studies have observed altered decomposition dynamics beneath invasive plants, few
71 have looked at how clearing invaded sites affects soil processes (Frank et al., 2018; Osburn et al.,

72 2018). Recent years have seen a considerable effort to control the spread of invasives such as *R.*
73 *ponticum* and restore native habitats in the UK (Jackson, 2008; Snowdonia Rhododendron
74 Partnership, 2015; Tyler et al., 2006). The most common method of control for large patches of
75 mature *R. ponticum* thickets is to cut and either burn or chip the stems, whilst periodically revisiting
76 sites to apply herbicide on *R. ponticum* regrowth (Edwards, 2006; Jackson, 2008). This method of
77 controlling invasives exposes large areas of bare ground, potentially influencing soil functioning and
78 properties in many ways.

79 Firstly, the bare ground is exposed to increased solar radiation following canopy removal (Araujo and
80 Austin, 2015). This would lead to increased soil temperature, and in turn, higher decomposition
81 rates through enhanced microbial activity (Eliasson et al., 2005; Hartley et al., 2007; Rutledge et al.,
82 2010). Increased solar radiation may also lead to greater photochemical breakdown of the
83 recalcitrant litter compounds such as lignin and tannins, further enhancing the release of CO₂ from
84 soil (Austin et al., 2016; Gliksman et al., 2018; Rutledge et al., 2010). Photodegradation, however,
85 may not greatly influence soil carbon content, as UV radiation does not penetrate into the soil
86 (Moorhead and Callaghan, 1994).

87 Canopy removal may also impact upon soil water content; increased surface air heat loss during the
88 night post-clearance would lead to higher dew formation (Gliksman et al., 2018; Xiao et al., 2009)
89 and potentially higher microbial activity as a result (Gliksman et al., 2017). Canopy interception of
90 rainfall also results in less water reaching the ground (Llorens and Domingo, 2007), and its clearance
91 will result in lower evapotranspiration. Removing the canopy may therefore result in higher soil
92 moisture content, leading to higher microbial activity (Hanson et al., 2000).

93 Finally, cutting *R. ponticum* may change soil chemistry and microbial communities. A recent study in
94 North America on another invasive shrub, *Lonicera maackii* (Rupr.) Herder, suggested that cutting
95 leads to a pulse in rhizodeposition (Frank et al., 2018). Increased exudation of carbon substrates
96 post-clearance influences the microbial community, in turn leading to altered SOM degradation

97 (Frank et al., 2018; Pignataro et al., 2012). Despite this, Osburn et al. (2018) found that the removal
98 of a *Rhododendron maximum* canopy had no effect on the activity of enzymes involved in
99 decomposition.

100 Invasive plant removal therefore has the potential to alter soil processes, chemical composition and
101 microbial communities. Great emphasis is placed on removing invasive plants, given the critical role
102 this plays in restoring native habitats and preventing further invasion (European Union, 2014).

103 However, our understanding of how these activities influence soil processes remains limited. As it
104 will influence the vegetation community that can inhabit the soil post-clearance, and thus the
105 success of restoration, increasing our understanding of the impacts of clearance on soil processes is
106 important.

107 This study investigated the impact of *R. ponticum* invasion and its subsequent clearance on soil
108 functioning and chemistry, testing four hypotheses. Firstly, that soil respiration is lower on uncleared
109 plots of *R. ponticum* relative to adjacent native vegetation plots. Secondly, that clearing the canopy
110 increases soil respiration, relative to uncleared *R. ponticum* plots. To provide a mechanistic
111 explanation for the above hypotheses, it was further hypothesised that *R. ponticum* clearance would
112 alter both (iii) soil microbial communities and (iv) SOM chemical composition.

113 **2. Materials and methods**

114 **2.1. Site description**

115 A 0.9 hectare site in Tanygrisiau (52°58'55" N 3°57'18" W), Snowdonia National Park, Wales, was
116 selected for sampling due to the presence of well-established *R. ponticum* thickets (100% *R.*
117 *ponticum* cover, <3 m tall). Uninvaded areas of native vegetation cover were also present, consisting
118 of acid grassland species typical of the area including *Agrostis capillaris* L., *Nardus stricta* L., *Molinia*
119 *caerulea* L., *Juncus effusus* L., *Carex echinata* Murray and to a lesser extent, shrubs such as *Calluna*
120 *vulgaris* L. (Hull) and *Vaccinium myrtillus* L.. Soil at the site was a peaty podzol of the Hexworthy
121 series (National Soil Resources Institute, 2019). The site has a north-east facing aspect with an

122 average gradient of 10%. Altitude at the area sampled varied from 180 m to 190 m. On average, the
123 site received an annual 2678 mm of rain, whilst the mean air temperature was 9.3 °C over the five
124 years prior to sampling (Met Office, 2018).

125 Between the 19th and 23rd of March 2018, eight 6 m x 20 m strips were cleared of *R. ponticum* by
126 cutting the stems at their base and burning the material off-site; roots were not removed from the
127 soil. These cleared strips alternated with uncleared 6 m wide strips (Figure S1). Subsequently, 3m ×
128 3m plots were placed in the middle of the alternating cleared and uncleared strips (n = 8), with each
129 plot surrounded by a 3 m buffer strip to avoid edge effects. Additionally, eight native vegetation
130 plots were placed where *R. ponticum* had not invaded, as close as possible to the invaded plots
131 whilst ensuring they were not influenced by *R. ponticum*. The experiment therefore had three plot
132 types; cleared, native and uncleared.

133 **2.2. Soil respiration measurements**

134 Sampling was conducted before clearance on the 16th of March 2018. Five bulked soil cores (20 mm
135 diameter) containing both O-horizon material and mineral soil were collected from each plot to a
136 depth of 15 cm. Samples were freeze-dried (LTE Scientific Lyovac, Oldham, UK) and weighed to
137 measure moisture content gravimetrically, then stored at -80 °C prior to chemical analyses. Soil
138 respiration was measured on each plot between 10 am and 2 pm on three consecutive days to
139 account for variation within timepoints, using an infra-red gas analyser (IRGA) (EGM-4, PP-systems,
140 USA) connected to a soil chamber (SRC-1, PP-systems, USA). Alongside each soil respiration
141 measurement, data for soil temperature (to a depth of 10 cm) (Hanson H2203A temperature probe),
142 photosynthetically active radiation (PAR) (Skye Instruments PAR Special Sensor, Wales) and soil
143 moisture (gravimetrically) were also collected.

144 To investigate the impact of *R. ponticum* canopy removal, the soil sampling and respiration
145 measurements (and associated measurements) made at the start of the experiment were repeated
146 six times over the following growing season (one, two, four, eight, 16- and 32-weeks post-clearance).

147 Soil samples collected both prior to clearance and 32-weeks post-clearance were analysed for their
148 total carbon and nitrogen content with a Vario MAX cube analyser (Elementar, Langenselbold,
149 Germany).

150 **2.3. Phospholipid fatty acid (PLFA) analysis**

151 Soil microbial community structure was investigated by analysis of PLFA profiles. Freeze-dried soil
152 samples collected from each plot, both prior to and 32 weeks post *R. ponticum* removal, were sieved
153 to remove roots and stones (2 mm mesh) and homogenised with a ball mill (Retsch MM200, Haan,
154 Germany). PLFAs were analysed using a high throughput method adapted from Buyer and Sasser
155 (2012), described in full detail in the supplementary information. Briefly, PLFAs were extracted from
156 0.4-0.6 g of each freeze-dried soil sample using phosphate buffered Bligh and Dyer extractant.
157 Freeze-dried extracts were subsequently dissolved in chloroform and transferred to solid phase
158 extraction (SPE) plates (100 mg silica, Phenomenex, Torrance, CA, USA), to be eluted into a 96 well
159 plate using acetone. Extracts were analysed using an Agilent 7890A gas chromatograph with a DB-
160 5MS column and an FID detector.

161 In total, 16 PLFAs were identified in the soil samples. These included commonly used biomarkers of
162 fungi (18:2(n-6,9), 18:2(n-6,9) and 18:1(n-9)) (Bååth and Anderson, 2003), Gram-positive bacteria
163 (15:0i, 15:0a, 16:0i, i17:0 and a17:0) (Kidd Haack et al., 1994; Lechevalier and Lechevalier, 1988;
164 Zelles, 1999) and Gram-negative bacteria (16:1, 7,cy-17:0, 18:1(n-7) and 7,8cy-19:0) (Galbraith and
165 Wilkinson, 1991; Ratledge and Wilkinson, 1988; Zelles, 1999). These markers were used to measure
166 the abundance of these microbial groups, as well as the fungi: bacteria (F:B) and Gram-positive:
167 Gram-negative ratios (GP:GN) (Frostegård et al., 2011), which are indicators of substrate quality in
168 soil (Fanin et al., 2019; Van Der Heijden et al., 2008).

169 **2.4. Fourier-transform mid-infrared spectroscopy (FTIR) analysis**

170 Soil chemistry was investigated by FTIR spectroscopy. Freeze-dried soil samples collected from each
171 plot prior to clearance and 32 weeks post-clearance were sieved and milled, as previously described

172 above. Spectra were measured using an IRTracer-100 spectrophotometer (Shimadzu, Japan) fitted
173 with a Golden Gate diamond ATR accessory (Specac Ltd., Orpington, UK). Absorption was recorded
174 in duplicate with a wavelength range of 4000 to 600 cm^{-1} and resolution of 2 cm^{-1} . Between each
175 sample, a background reading was taken to ensure that any atmospheric changes in CO_2 and H_2O
176 were corrected for.

177 FTIR spectra showed several absorbance peaks in wavebands associated with bond vibrations in
178 specific groups of compounds relevant for organic matter quality. These included peaks associated
179 with C=C stretching (1620 cm^{-1} and 1510 cm^{-1}) and C–O stretching (1420 cm^{-1}) in aromatic and
180 carboxylic structures and C–O–C vibrations in polysaccharides (1020 cm^{-1}) (Artz et al., 2008;
181 Haberhauer et al., 1998; Heller et al., 2015). Peak intensity for wavebands associated with aromatic
182 compounds (sum of 1620 cm^{-1} , 1510 cm^{-1} and 1420 cm^{-1}) and polysaccharides (1020 cm^{-1}) was
183 measured, whilst the aromaticity index was calculated as the ratio of absorbance in aromatic to
184 polysaccharide wavebands (McAnallen et al., 2017).

185 **2.5. Statistical analyses**

186 All analyses were conducted using R statistical software (version 3.5.3) (R Development Core Team,
187 2017). To test for differences among plots in soil respiration, generalised linear mixed models
188 (GLMMs) were used for repeated measurements, whilst generalised linear models (GLMs) were used
189 to analyse data within time points. Prior to analysis, we tested for normality and skewness,
190 subsequently using appropriate error distributions and link functions in the models (see Table S1 for
191 full details). Tukey's HSD test was used for pairwise comparisons, conducted using the *multcomp* R
192 package. The soil respiration measurements made on three consecutive days were averaged, with
193 the mean value used in statistical analyses. Soil temperature can influence soil respiration rates
194 (Schaefer et al., 2009), and was therefore included as a covariate in models analysing soil respiration.
195 Soil moisture was not included as a covariate as it did not improve model fit, following comparison
196 of Akaike information criterion (AIC) values. Cumulative respiration was calculated as the area under

197 the curve, with the log-transformed data analysed by one-way ANOVA followed by Tukey's HSD test
198 for pairwise comparisons. One-way ANOVA and Tukey's HSD test was also used to compare the
199 abundances of specific PLFAs associated with different microbial groups among plot types. Prior to
200 analysis, PLFA abundance data for each microbial group were normalized by the total PLFA
201 abundance to obtain relative abundance, correcting for varying extraction efficiency between
202 samples. Concentration data for each individual PLFA were Hellinger transformed, centred and
203 scaled prior to cross-validated principal components analysis (PCA) (Legendre and Gallagher, 2001;
204 Legendre and Legendre, 1998). To statistically test for differences in the PLFA profiles of different
205 plots, Euclidean distance matrices were analysed by permutational multivariate ANOVA
206 (PERMANOVA) with 10000 permutations, using the *adonis* package. FTIR spectral data were pre-
207 processed by baseline correction and smoothing using the *ChemoSpec* package, whilst the 1800-
208 2500 cm^{-1} region was removed to minimise background variability. Scaled and centred spectral data
209 were visualised by PCA, and Euclidean distance matrices were analysed by PERMANOVA as
210 previously described. FTIR peak intensities for the specific wavebands and ratios previously
211 described were analysed in GLMs and GLMMs.

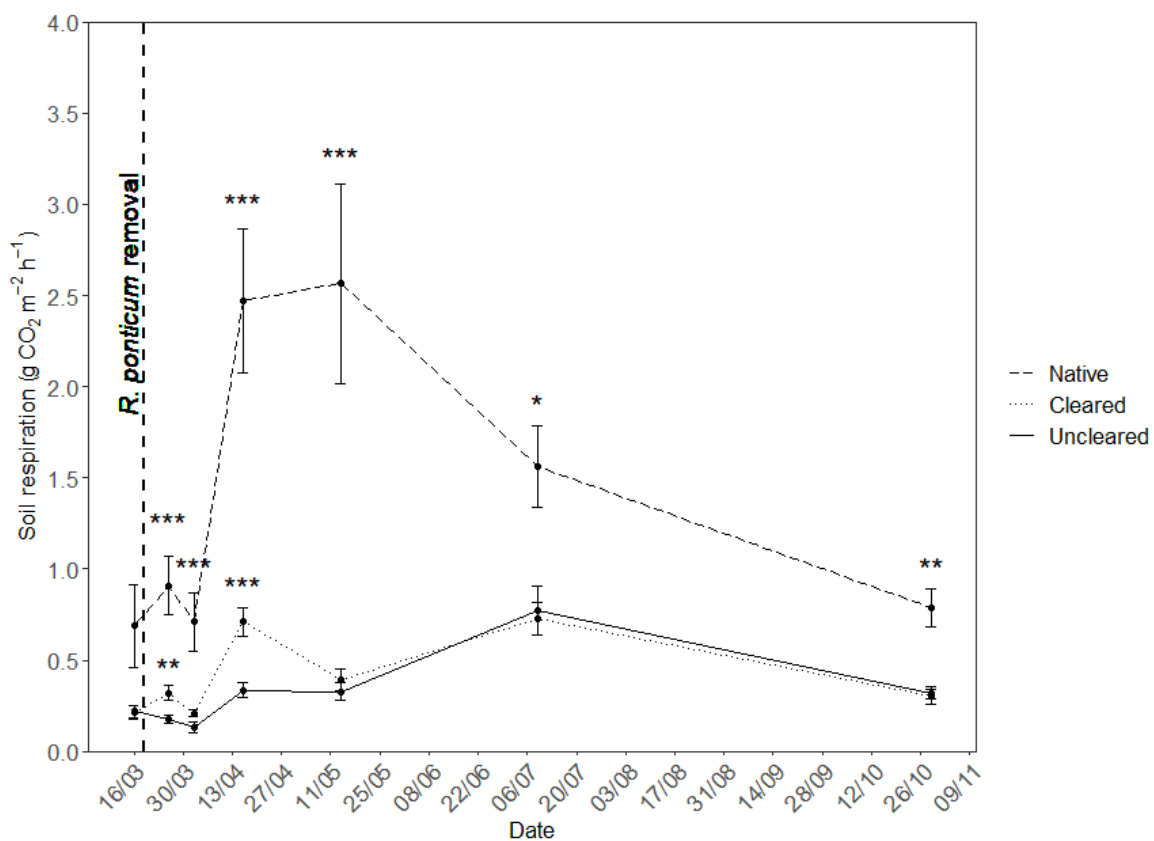
212 **3. Results**

213 **3.1. Impact of *R. ponticum* on soil respiration**

214 Over the whole growing season, soil respiration was significantly lower in the uncleared plots
215 relative to the native vegetation plots ($P < 0.001$) (Figure 1). Soil temperature significantly affected
216 soil respiration when included as a covariate in the above model ($P < 0.001$) and was significantly
217 higher in native vegetation plots relative to uncleared plots over the growing season ($P < 0.001$)
218 (Table S1). Soil moisture did not significantly differ among plot types ($P = 0.170$), whilst PAR was
219 significantly lower in uncleared plots ($P < 0.001$) (Table S1).

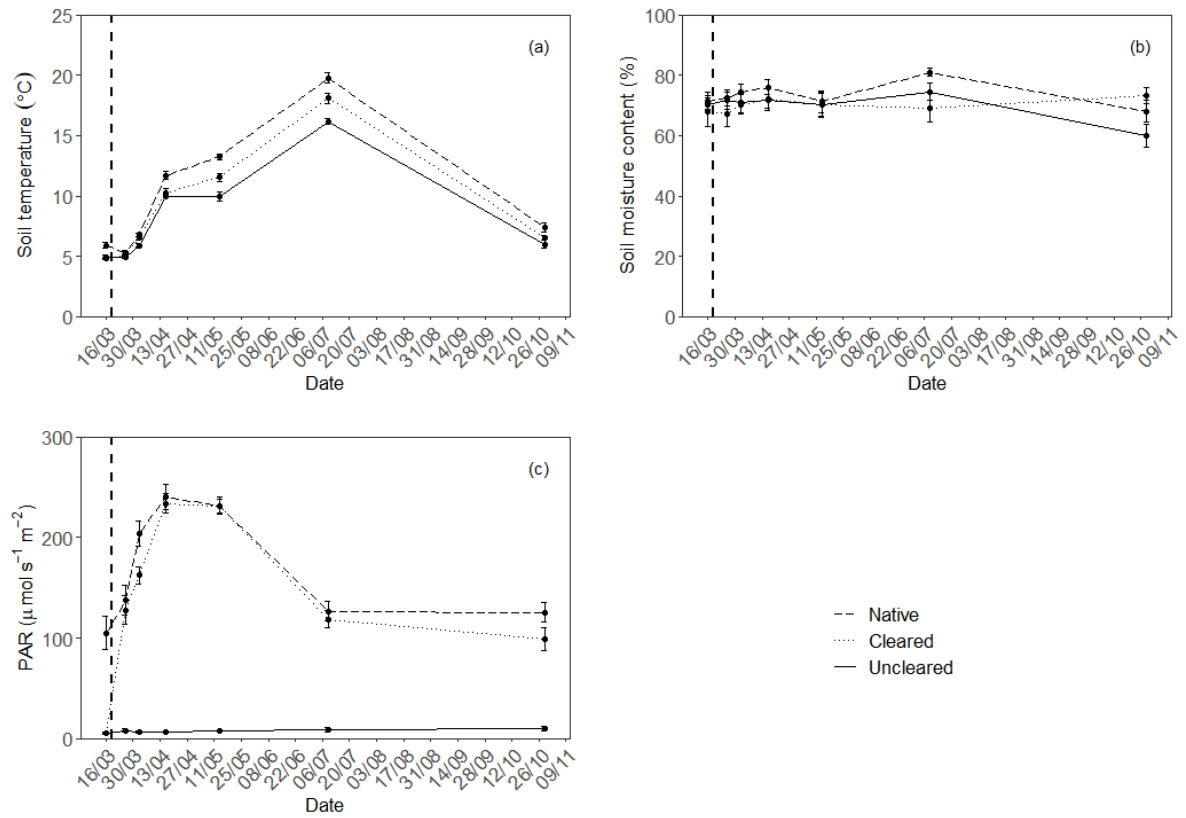
220 *R. ponticum* clearance did not increase soil respiration, with no significant difference in cumulative
221 respiration between the cleared and uncleared plots over the growing season ($P = 0.799$) (16.37 g

222 CO₂ m⁻² and 15.31 g CO₂ m⁻² respectively). Cumulative respiration during this period was significantly
 223 higher on the native vegetation plots (50.17 g CO₂ m⁻²), relative to the cleared and uncleared plots (P
 224 < 0.001). Similarly, a repeated measures model detected no significant difference in soil respiration
 225 between the cleared and uncleared plots over the 32-week period post-clearance ($P = 0.214$) (Figure
 226 1). Soil respiration in the native vegetation plots remained significantly higher than in the cleared
 227 plots post *R. ponticum* removal over the same period ($P < 0.001$) (Table S1). Repeated measures
 228 analysis detected soil temperature was significantly higher in cleared plots relative to uncleared
 229 plots over the 32 weeks post-clearance ($P = 0.005$). When comparing plots within individual time
 230 points, higher soil respiration on cleared plots relative to uncleared plots was observed one- and
 231 four-weeks post-clearance ($P = 0.009$ and $P < 0.001$ respectively) (Figure 1). No differences were
 232 observed between these plots two ($P = 0.222$), eight ($P = 0.619$), 16 ($P = 0.783$) or 32 weeks ($P =$
 233 0.489) post-clearance.



235 **Figure 1:** Mean soil respiration (\pm standard error) in the cleared, native vegetation and uncleared
236 plots over the 32-week duration of the experiment. Plots were cleared of *R. ponticum* during the
237 week beginning 19th March 2018. Significantly higher soil respiration in the cleared or native plots
238 relative to the uncleared plots is denoted by * ($P < 0.05$), ** ($P < 0.01$) and *** ($P < 0.001$) following
239 analysis in GLMs.

240 Despite soil respiration being lower in cleared and uncleared plots relative to native vegetation
241 plots, no significant differences were detected in the soil carbon percentage of these plots prior to
242 clearance ($P = 0.315$), or 32 weeks post-clearance ($P = 0.105$) (Table 1). Similarly, soil nitrogen
243 percentage did not vary significantly among plot types prior to clearance ($P = 0.084$) (Table 1).
244 Cleared plots had significantly lower soil nitrogen percentage compared to the native plots 32 weeks
245 post-clearance ($P = 0.004$), but not compared to the uncleared plots ($P = 0.176$) (Table 1). No
246 significant differences in soil nitrogen percentage were detected between the uncleared and the
247 native plots post-clearance ($P = 0.293$) (Table 1). The soil C:N ratio of the uncleared plots was
248 significantly higher than the native vegetation plots at the start of experiment ($P = 0.026$), however
249 no significant differences were detected among any of the plot types 32 weeks post-clearance ($P =$
250 0.139). No significant differences in soil pH were observed among the different plot types either
251 before or after clearance ($P = 0.652$ and $P = 0.749$ respectively) (Table 1).



252

253 **Figure 2:** Mean (a) soil temperature, (b) moisture content and (c) photosynthetically active radiation

254 (PAR) (\pm standard error) in the cleared, native vegetation and uncleared plots over the 32-week

255 duration of the experiment. The vertical dotted lines mark the time at which plots were cleared of *R.*

256 *ponticum* (during the week beginning 19th March 2018).

257 **Table 1:** Mean (\pm standard error) carbon content, nitrogen content, C:N ratio and pH of soils sampled from cleared, native vegetation or uncleared plots,
 258 both before clearance and 32 weeks post-clearance. Common letters denote statistically non-significant differences ($P > 0.05$) following analysis in GLMs.

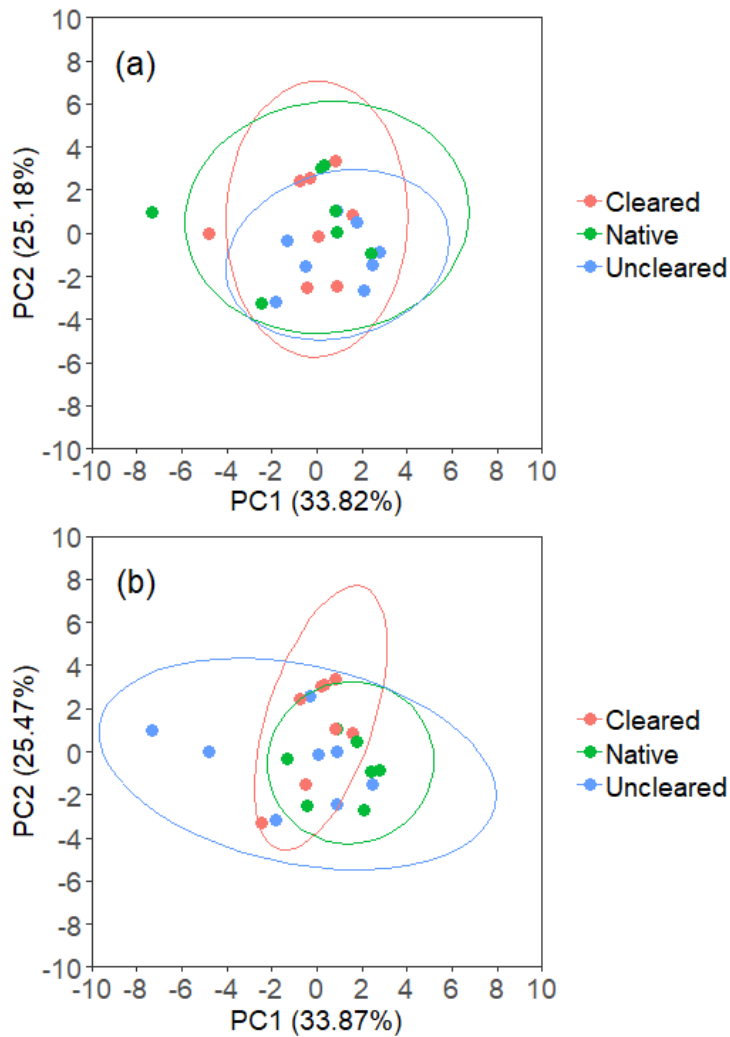
	Prior to clearance			32 weeks post-clearance		
	Cleared	Native	Uncleared	Cleared	Native	Uncleared
C content (%)	25.27 \pm 3.44	32.47 \pm 3.27	28.62 \pm 2.91	29.23 \pm 3.28	37.13 \pm 2.14	34.44 \pm 1.97
N content (%)	1.35 \pm 0.19	1.91 \pm 0.16	1.51 \pm 0.17	1.52 \pm 0.17 a	2.14 \pm 0.10 b	1.86 \pm 0.12 ab
C:N	18.70 \pm 0.55 ab	16.88 \pm 0.71 a	19.31 \pm 0.71 b	19.26 \pm 0.94	17.26 \pm 0.55	18.61 \pm 0.50
pH	4.03 \pm 0.07	4.09 \pm 0.09	3.97 \pm 0.08	3.83 \pm 0.09	3.85 \pm 0.04	3.89 \pm 0.08

259

260 3.2. Soil PLFA analysis

261 Hellinger transformed concentration data of 16 PLFAs extracted from soils collected prior to
262 clearance and 32 weeks post-clearance were subjected to PCA. The first two PCs accounted for 59%
263 of total variance prior to clearance, 59.34% post-clearance, and did not clearly separate the different
264 plot types in either model (Figure 3). To statistically determine whether the clusters of each plot
265 type were different, Euclidean distance matrices were analysed by PERMANOVA. These analyses
266 corroborated the interpretation of the PCA, detecting no significant differences in PLFA profiles
267 among the different plot types prior to clearance ($P = 0.204$), or 32 weeks post-clearance ($P = 0.066$).

268 No significant differences in total PLFA concentration were observed among the cleared, uncleared
269 and native plots either prior to clearance ($P = 0.727$), or 32 weeks post-clearance ($P = 0.128$) (Table
270 2). This was also true for the F:B and GP:GN ratios prior to clearance ($P = 0.072$ and $P = 0.942$
271 respectively) and 32-weeks post-clearance ($P = 0.201$ and $P = 0.758$). Prior to clearance, no
272 significant differences in Gram-negative ($P = 0.262$) or total bacterial ($P = 0.085$) PLFA abundance
273 were observed among plots. However, the plots that were to be cleared had significantly lower
274 fungal PLFA abundance ($P = 0.038$) and higher Gram-positive abundance ($P = 0.029$) compared to the
275 plots that would be left uncleared. No significant differences in the relative abundances of the
276 different microbial groups were observed among plots post-clearance.



277

278 **Figure 3:** Score plots for PCA models analysing the Hellinger transformed concentration data of the
 279 16 PLFAs identified in the soil samples collected from the different plot types both (a) prior to *R.*
 280 *ponticum* removal and (b) 32 weeks post-clearance. Plots were either cleared of *R. ponticum*, left
 281 uncleared or uninvaded and consisting of native vegetation (n = 8). Models were cross validated to
 282 evaluate fit and avoid overfitting. Ellipses denote the 95% confidence intervals for each of the
 283 different plot types.

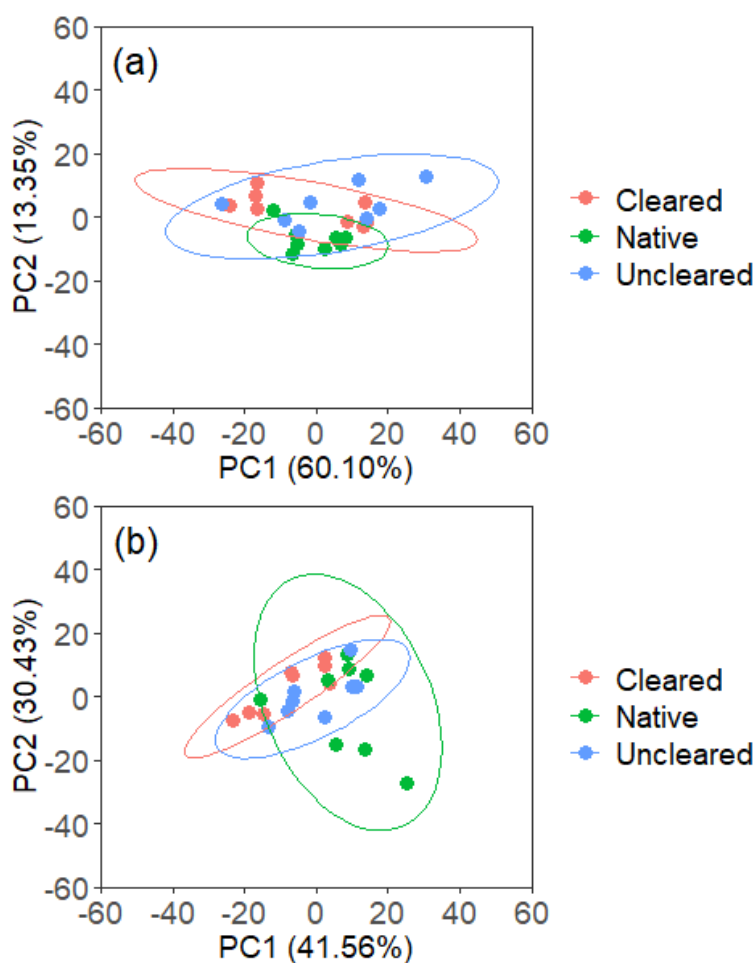
284 **Table 2:** Mean relative abundance (%) (\pm standard error) of PLFAs associated with different microbial groups in the samples collected from cleared, native
 285 vegetation or uncleared plots, both before clearance and 32 weeks post-clearance. Total PLFA concentration (nmol g⁻¹ soil) and the fungal: bacterial (F:B)
 286 and Gram-positive: Gram-negative (GP:GN) ratios are also given. Common letters denote non-significant differences among the different plot types
 287 following one-way ANOVA.

	Prior to clearance			32 weeks post-clearance		
	Cleared	Native	Uncleared	Cleared	Native	Uncleared
Fungal PLFAs (%)	44.14 \pm 2.60 a	49.87 \pm 1.80 ab	51.14 \pm 0.99 b	51.89 \pm 1.05	49.19 \pm 1.26	50.48 \pm 1.23
Bacterial PLFAs (%)	27.68 \pm 1.58	25.04 \pm 1.08	23.88 \pm 0.66	26.65 \pm 0.86	25.04 \pm 0.98	21.92 \pm 1.84
Gram-positive PLFAs (%)	14.25 \pm 0.69 a	12.84 \pm 0.52 ab	12.37 \pm 0.25 b	11.86 \pm 0.65	12.66 \pm 0.60	11.25 \pm 0.93
Gram-negative PLFAs (%)	13.02 \pm 0.97	11.70 \pm 0.71	11.17 \pm 0.71	10.34 \pm 0.41	11.91 \pm 0.56	10.34 \pm 0.11
Total PLFAs (nmol g ⁻¹ soil)	146.13 \pm 17.13	163.89 \pm 14.40	141.82 \pm 27.72	186.63 \pm 33.72	212.78 \pm 38.89	124.56 \pm 8.26
F:B	1.66 \pm 0.18	2.04 \pm 0.16	2.16 \pm 0.10	2.32 \pm 0.12	2.00 \pm 0.12	2.45 \pm 0.25
GP:GN	1.12 \pm 0.05	1.11 \pm 0.05	1.14 \pm 0.09	1.15 \pm 0.07	1.07 \pm 0.05	1.14 \pm 0.12

288

289 **3.3. Soil FTIR spectra analysis**

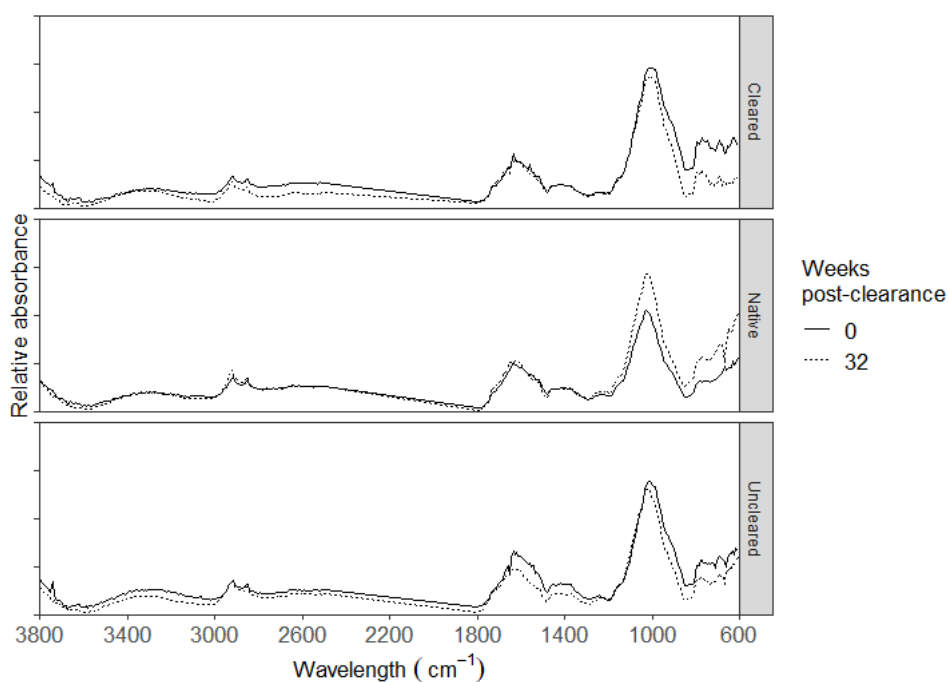
290 The first two PCs of soil samples collected from cleared, native vegetation and uncleared plots
291 accounted for 73.45% of the total variance prior to clearance and 71.99% post-clearance. Partial
292 separation by plot type was observed both prior to and 32 weeks post-clearance along PC1 and PC2
293 (Figure 4). However, PERMANOVA detected no significant differences in Euclidean distances among
294 the different plot types, either prior to- or 32 weeks post-clearance ($P = 0.056$ and $P = 0.122$
295 respectively).



296

297 **Figure 4:** Score plots for PCA models analysing the FTIR spectra of soils collected from the different
298 plot types both (a) prior to *R. ponticum* removal and (b) 32 weeks post-clearance. Plots were either
299 cleared of *R. ponticum*, left uncleared or uninvaded and consisting of native vegetation ($n = 8$).
300 Models were cross validated to evaluate fit and avoid overfitting. Ellipses denote the 95% confidence
301 intervals for each of the different plot types.

302 Visual inspection of FTIR spectra showed differences in peak intensities for specific wavebands
303 relevant to SOM quality (Figure 5). At the start of the experiment, absorbance in the polysaccharide
304 region was significantly lower for soil from native plots relative to the plots that would be cleared (P
305 < 0.001) and to the plots that would be left uncleared ($P = 0.022$), whilst there was no difference
306 between the cleared and uncleared plots ($P = 0.541$) (Table 3). No differences among plot types
307 were observed in this region post-clearance ($P = 0.231$). Polysaccharide absorbance significantly
308 increased for native plot soil over the 32-week growing season ($P < 0.001$), whilst no significant
309 change was observed for cleared and uncleared plots over the same period ($P = 0.150$ and $P = 0.917$
310 respectively). Absorbance in the region associated with aromatic structures did not vary among plots
311 in samples collected either prior to or post-clearance ($P = 0.197$ and $P = 0.894$ respectively).
312 Aromatic region absorbance significantly decreased over the growing season for uncleared plot soil
313 ($P = 0.049$), whilst no significant change was observed for cleared ($P = 0.846$) or native ($P = 0.975$)
314 plot soil. The ratio of absorbance in aromatic to polysaccharide regions can be used as an index of
315 aromaticity and humification (McAnallen et al., 2017). Soil aromaticity decreased over 32 weeks in
316 both the native vegetation ($P = 0.048$) and uncleared plots ($P = 0.014$), however no change was
317 observed for cleared plots ($P = 0.957$).



319 **Figure 5:** Plot of FTIR spectra for soils sampled from plots cleared of *R. ponticum*, native vegetation
 320 plots and plots left uncleared. Soils were sampled prior to (0 weeks) and 32 weeks post-clearance.

321 **Table 3:** Mean (\pm standard error) relative absorption (measured as peak intensity) of soil FTIR
 322 spectra in wavebands associated with aromatic compounds (1620 cm^{-1} , 1510 cm^{-1} and 1420 cm^{-1}),
 323 polysaccharides (1020 cm^{-1}), and the ratio of absorbance in aromatic to polysaccharide wavebands
 324 (aromaticity index). Soils were sampled both prior to and 32 weeks post *R. ponticum* clearance.
 325 Common letters denote statistically non-significant differences within plots over time.

Plot type	Weeks post-clearance	Waveband relative absorption		
		Aromatics	Polysaccharides	Aromaticity index
Cleared	0	2.14 ± 0.36	2.55 ± 0.10	0.88 ± 0.18
	32	2.06 ± 0.26	2.39 ± 0.13	0.89 ± 0.13
Native	0	2.11 ± 0.16	1.96 ± 0.08 a	1.10 ± 0.11 a
	32	2.11 ± 0.24	2.63 ± 0.12 b	0.81 ± 0.10 b
Uncleared	0	2.76 ± 0.45 a	2.38 ± 0.14	1.15 ± 0.16 a
	32	1.95 ± 0.25 b	2.39 ± 0.06	0.81 ± 0.10 b

326 4. Discussion

327 Overall, soil respiration was significantly lower on uncleared *R. ponticum* plots relative to native
 328 vegetation plots, consistent with the first hypothesis. Soil moisture and temperature are both known
 329 to influence soil respiration rates (Hanson et al., 2000; Rutledge et al., 2010; Schaefer et al., 2009).
 330 However, only soil temperature contributed towards the variation in soil respiration between
 331 invaded and native vegetation plots in the current study, as soil moisture did not significantly vary
 332 among plot types. Soil temperature was consistently higher in native vegetation plots than in
 333 uncleared plots over the 32-week period monitored, most likely a consequence of the dense shade
 334 cast by the *R. ponticum* canopy. Despite the observed differences in soil respiration, soil carbon
 335 percentage did not vary between invaded and native plots. This may reflect the size of the soil

336 carbon pools, which are typically much larger than the amount of carbon released by soil respiration
337 annually (Hartley et al., 2007; Valentini et al., 2000).

338 Leading from the lower soil respiration on uncleared plots relative to native vegetation plots, it was
339 hypothesised that clearing *R. ponticum* would lead to increased soil respiration, relative to uncleared
340 plots. Clearing led to a short-term increase in soil respiration at one- and four-weeks post-clearance.
341 Several factors may have contributed towards this, including the observed increase in solar radiation
342 at ground level post canopy removal, leading to higher soil temperature on cleared plots relative to
343 uncleared plots, known to increase soil respiration (Rutledge et al., 2010; Yuste et al., 2004). Cutting
344 woody shrubs and trees can also cause pulses in rhizodeposition and fine root mortality, which
345 stimulate microbial activity and decomposition beneath the cut shrub (Frank et al., 2018; Pignataro
346 et al., 2012).

347 The initial increase in soil respiration post-clearance did not persist over the whole growing season,
348 despite the increase in soil temperature. This suggests that there were additional factors influencing
349 soil respiration in cleared plot soil. Two explanations have previously been proposed for decreasing
350 response in soil respiration to soil warming over time following perturbation (Hartley et al., 2007).

351 One potential reason is that the increase in soil temperature may cause a shift in soil microbial
352 community structure, as different microbial groups have varying optimal temperature ranges
353 (Hartley et al., 2007; Luo et al., 2001; Zogg et al., 1997). The altered microbial community may have
354 access to a greater carbon pool, as they are able to metabolise carbon substrates that were
355 unavailable to the community before soil warming (Zogg et al., 1997). This initially results in higher
356 soil respiration, before declining over time as the community acclimates to the warmer soil
357 temperature (Hartley et al., 2007; Luo et al., 2001; Zogg et al., 1997).

358 An altered microbial community is unlikely to explain the transient increase in soil respiration
359 observed in the current study. Zogg et al. (1997) found shifts in PLFA profiles indicating altered
360 microbial community structure in response to soil warming. However, we detected no significant

361 differences post-clearance among plot types in soil PLFAs, contrary to the third hypothesis, despite
362 an increase in soil temperature post-clearance. The similar PLFA profiles of cleared, uncleared and
363 native plot soils in the current study may reflect the low soil pH (pH of <4.1 for all plot types) and
364 high C:N ratio of soil on the site, which tends to favour fungal dominated communities (Bååth and
365 Anderson, 2003; Rousk et al., 2010). The PLFA method is regarded as an efficient and sensitive
366 method of detecting shifts in the relative abundance of bacteria and fungi (Frostegård et al., 2011;
367 Ramsey et al., 2006), and has detected shifts in previous studies on other invasives (Kourtev et al.,
368 2003) and on soil warming (Zogg et al., 1997). Molecular techniques such as next generation
369 sequencing may provide greater resolution for detecting finer changes in community composition,
370 however Orwin et al. (2018) concluded that both approaches are broadly comparable. This is
371 supported by the fact that no differences in soil F:B ratios were detected by Osburn et al. (2018)
372 using a DNA sequencing technique two years post-clearance of the related *R. maximum*.
373 Furthermore, the PLFA approach may be more suitable for detecting changes in higher taxonomic
374 groups which lead to altered ecosystem functions (Orwin et al., 2018). We therefore consider the
375 PLFA method to be appropriate for the current study.

376 Substrate limitation has also been suggested as a reason for declining soil respiration rates in
377 response to increased soil temperature (Eliasson et al., 2005; Hartley et al., 2007). Soil warming
378 initially leads to increased soil respiration, however microbial activity will decline over time as the
379 pool of labile carbon becomes depleted (Eliasson et al., 2005; Hartley et al., 2007). This suggestion of
380 substrate limitation is supported by the FTIR data, which is a commonly used technique to
381 investigate shifts in SOM composition in a range of soil types (Elliott et al., 2007; Heller et al., 2015;
382 McAnallen et al., 2017). Our fourth hypothesis which stated that soil FTIR spectra would be altered
383 by clearing *R. ponticum* proved to be true; soil aromaticity was lower 32 weeks post-clearance
384 (October 2018) compared to the start of the experiment (March 2018) in both the uncleared and
385 native vegetation plots, whilst there was no change in this ratio in cleared plots during the same
386 time period.

387 FTIR absorbance in regions associated with organic compounds may overlap with wavebands of
388 mineral absorbance; for example CaCO_3 absorbance may overlap with the 1510 cm^{-1} and 1620 cm^{-1}
389 wavebands associated with aromatic organic compounds, whilst kaolinite absorbance may overlap
390 with the polysaccharide waveband (1020 cm^{-1}) (Le Guillou et al., 2015). Despite this, we consider our
391 approach to be appropriate given the peaty nature of the Hexworthy soil (National Soil Resources
392 Institute, 2019) and the igneous bedrock (British Geological Society, 2019) present on the site. As a
393 result, the calcareous content of the soil would be low, thus the effect of overlapping CaCO_3
394 absorbance is most likely negligible. Additionally, the low density of organic matter meant that by
395 volume, the inorganic fraction of the soil was relatively low. Therefore, we argue that the soil
396 organic fraction was the main influence on FTIR absorbance, and the overlapping of carbonates and
397 clay minerals was likely to be negligible.

398 The fact that aromaticity decreased over the growing season for both uncleared and native plots,
399 but not for the cleared plots suggests that *R. ponticum* removal influenced substrate quality. These
400 observed variations in SOM quality may be due to changes in root exudation, canopy cover and litter
401 deposition post-clearance. Whilst shrub clearance can lead to short-term pulses in rhizodeposition
402 (Frank et al., 2018), canopy removal will result in an absence of photosynthesis in cleared plots, and
403 thus lower photosynthate transfer to the soil in the longer-term, relative to uncleared and native
404 vegetation plots. Additionally, carbon substrates are also introduced to the soil from canopy
405 throughfall and in leachates from freshly deposited leaf litter (Frank et al., 2018; Hättenschwiler and
406 Vitousek, 2000). The bare soil of the cleared plots would therefore likely have received lower input
407 of fresh carbon substrates post removal of the *R. ponticum* canopy, relative to the soil of the
408 uncleared and native plots. Thus, the pool of labile polysaccharides in the cleared plot soil would
409 become depleted relative to the aromatic compounds, which are more resistant to decomposition
410 and therefore become enriched in the soil (McAnallen et al., 2017; von Lützow et al., 2006).

411 Whilst soil aromaticity decreased for the uncleared plots and remained stable for the cleared plots
412 over the experimental period, soil respiration did not differ at the end of this period between
413 cleared and uncleared plots. This suggests that there were additional contributory factors
414 influencing SOM decomposition in addition to substrate recalcitrance. Seasonal variation in soil
415 temperature may be important, with the differences between cleared and uncleared plots becoming
416 less pronounced in the Autumn. Soil physicochemical and biological factors are also known to
417 influence decomposition, through organic matter stabilisation (Schmidt et al., 2011; von Lützow et
418 al., 2006). Soil microbes may transform labile carbon substrates to stable compounds, which are
419 more resistant to decomposition (Cotrufo et al., 2013; Schmidt et al., 2011). Carbon substrates may
420 also adsorb to mineral surfaces or be physically occluded within soil aggregates, thus making them
421 unavailable to decomposer organisms (Cotrufo et al., 2013; Schmidt et al., 2011; Zimmermann et al.,
422 2012). Furthermore, carbon substrate availability to decomposer organisms can also be limited by
423 binding to polyphenols (Bending and Read, 1997; Six et al., 2002). This may be particularly important
424 for *R. ponticum*, as tannins leaching from the litter of the related *R. maximum* are reported to form
425 decay-resistant complexes with SOM, leading to slower mineralisation rates (Wurzburger and
426 Hendrick, 2009, 2007).

427 The lack of soil respiration response observed post-clearance in the current study may therefore be
428 explained by substrate recalcitrance and SOM stabilisation. Differences in soil respiration remained
429 between the cleared and native plots after one growing season. The persistence of this difference
430 will likely depend on the revegetation of the bare soil left behind post-clearance, and a recent study
431 highlighted that a native vegetation cover can take up to eight years to fully restore post *R. ponticum*
432 removal (Jones et al., 2019). Therefore, to investigate whether soil processes and functioning in
433 cleared plots transition towards native conditions post-clearance, a decadal study may be needed.

434 **5. Conclusions**

435 Our results show a short-term pulse in in soil respiration when *R. ponticum* is removed. This
436 occurred during the initial four weeks post-clearance and was a response to higher soil temperature,
437 but was limited in the longer-term by SOM quality. Soil PLFA profiles did not vary among cleared,
438 native and uncleared plots post-clearance, indicating that *R. ponticum* removal did not alter the
439 biomasses of different microbial groups. Our findings underline the strong influence of aboveground
440 vegetation on soil respiration. Soil processes in the longer-term post-clearance will depend on the
441 regeneration of native plant communities with cleared soil potentially taking decades to return to
442 typical natural conditions.

443 **Acknowledgements**

444 Gruffydd Lloyd Jones is grateful to both the Coleg Cymraeg Cenedlaethol and IBERS for supporting
445 his Ph.D. project stipend. We acknowledge the BBSRC strategic funding IBERS receives which
446 supported this work. Thanks are also expressed to Snowdonia National Park for further financial and
447 logistical support, as well as the local contractors and landowner for their support in designing this
448 experiment. We are also very grateful to four external reviewers for their constructive and helpful
449 comments on an earlier version of this manuscript.

450 **References**

- 451 Aerts, R., 1999. Interspecific competition in natural plant communities: Mechanisms, trade-offs and
452 plant-soil feedbacks. *Journal of Experimental Botany* 50, 29–37. doi:10.1093/jxb/50.330.29
- 453 Aerts, R., 1997. Climate, leaf litter chemistry and leaf litter decomposition in terrestrial ecosystems:
454 A triangular relationship. *Oikos* 79, 439–449. doi:10.2307/3546886
- 455 Araujo, P.I., Austin, A.T., 2015. A shady business: Pine afforestation alters the primary controls on
456 litter decomposition along a precipitation gradient in Patagonia, Argentina. *Journal of Ecology*
457 103, 1408–1420. doi:10.1111/1365-2745.12433

458 Artz, R.R.E., Chapman, S.J., Jean Robertson, A.H., Potts, J.M., Laggoun-Défarge, F., Gogo, S., Comont,
459 L., Disnar, J.R., Francez, A.J., 2008. FTIR spectroscopy can be used as a screening tool for
460 organic matter quality in regenerating cutover peatlands. *Soil Biology and Biochemistry* 40,
461 515–527. doi:10.1016/j.soilbio.2007.09.019

462 Austin, A.T., Méndez, M.S., Ballaré, C.L., 2016. Photodegradation alleviates the lignin bottleneck for
463 carbon turnover in terrestrial ecosystems. *Proceedings of the National Academy of Sciences*
464 113, 4392–4397. doi:10.1073/pnas.1516157113

465 Bååth, E., Anderson, T.H., 2003. Comparison of soil fungal/bacterial ratios in a pH gradient using
466 physiological and PLFA-based techniques. *Soil Biology and Biochemistry* 35, 955–963.
467 doi:10.1016/S0038-0717(03)00154-8

468 Bending, G.D., Read, D.J., 1997. Lignin and soluble phenolic degradation by ectomycorrhizal and
469 ericoid mycorrhizal fungi. *Mycological Research* 101, 1348–1354.
470 doi:10.1017/S0953756297004140

471 British Geological Society, 2019. *Geology of Britain viewer* [Web Document]. URL
472 <http://mapapps.bgs.ac.uk/geologyofbritain/home.html> (accessed 2.13.19).

473 Buyer, J.S., Sasser, M., 2012. High throughput phospholipid fatty acid analysis of soils. *Applied Soil*
474 *Ecology* 61, 127–130. doi:10.1016/j.apsoil.2012.06.005

475 Cotrufo, M.F., Wallenstein, M.D., Boot, C.M., Deneff, K., Paul, E., 2013. The Microbial Efficiency-
476 Matrix Stabilization (MEMS) framework integrates plant litter decomposition with soil organic
477 matter stabilization: Do labile plant inputs form stable soil organic matter? *Global Change*
478 *Biology* 19, 988–995. doi:10.1111/gcb.12113

479 DeLuca, T.H., Zewdie, S.A., Zackrisson, O., Healey, J.R., Jones, D.L., 2013. Bracken fern (*Pteridium*
480 *aquilinum* L. kuhn) promotes an open nitrogen cycle in heathland soils. *Plant and Soil* 367, 521–
481 534. doi:10.1007/s11104-012-1484-0

482 Edwards, C., 2006. Managing and controlling invasive Rhododendron. Edinburgh.

483 Ehrenfeld, J.G., Kourtev, P., Huang, W., 2001. Changes in soil functions following invasions of exoctic
484 understory indeciduous forests. *Ecological Applications* 11, 1287–1300. doi:10.2307/3060920

485 Eliasson, P.E., McMurtrie, R.E., Pepper, D.A., Strömngren, M., Linder, S., Ågren, G.I., 2005. The
486 response of heterotrophic CO₂ flux to soil warming. *Global Change Biology* 11, 167–181.
487 doi:10.1111/j.1365-2486.2004.00878.x

488 Elliott, G.N., Worgan, H., Broadhurst, D., Draper, J., Scullion, J., 2007. Soil differentiation using
489 fingerprint Fourier transform infrared spectroscopy, chemometrics and genetic algorithm-
490 based feature selection. *Soil Biology and Biochemistry* 39, 2888–2896.
491 doi:10.1016/j.soilbio.2007.05.032

492 European Union, 2014. Regulation (EU) No 1143/2014 of the European Parliament and of the
493 Council of 22 October 2014 on the prevention and management of the introduction and spread
494 of invasive alien species.

495 Fanin, N., Kardol, P., Farrell, M., Nilsson, M.C., Gundale, M.J., Wardle, D.A., 2019. The ratio of Gram-
496 positive to Gram-negative bacterial PLFA markers as an indicator of carbon availability in
497 organic soils. *Soil Biology and Biochemistry* 128, 111–114. doi:10.1016/j.soilbio.2018.10.010

498 Frank, G.S., Nakatsu, C.H., Jenkins, M.A., 2018. Soil chemistry and microbial community functional
499 responses to invasive shrub removal in mixed hardwood forests. *Applied Soil Ecology* 131, 75–
500 88. doi:10.1016/j.apsoil.2018.08.005

501 Frostegård, Å., Tunlid, A., Bååth, E., 2011. Use and misuse of PLFA measurements in soils. *Soil*
502 *Biology and Biochemistry* 43, 1621–1625. doi:10.1016/j.soilbio.2010.11.021

503 Galbraith, L., Wilkinson, S.G., 1991. Polar lipids and fatty acids of *Pseudomonas caryophylli*,
504 *Pseudomonas gladioli* and *Pseudomonas pickettii*. *Journal of General Microbiology* 137, 197–
505 202. doi:10.1016/j.camwa.2015.07.007

506 Gliksmann, D., Haenel, S., Osem, Y., Yakir, D., Zangy, E., Preisler, Y., Grünzweig, J.M., 2018. Litter
507 decomposition in Mediterranean pine forests is enhanced by reduced canopy cover. *Plant and*
508 *Soil* 422, 317–329. doi:10.1007/s11104-017-3366-y

509 Gliksmann, D., Rey, A., Seligmann, R., Dumbur, R., Sperling, O., Navon, Y., Haenel, S., De Angelis, P.,
510 Arnone, J.A., Grünzweig, J.M., 2017. Biotic degradation at night, abiotic degradation at day:
511 positive feedbacks on litter decomposition in drylands. *Global Change Biology* 23, 1564–1574.
512 doi:10.1111/gcb.13465

513 Haberhauer, G., Rafferty, B., Strebl, F., Gerzabek, M.H., 1998. Comparison of the composition of
514 forest soil litter derived from three different sites at various decompositional stages using FTIR
515 spectroscopy. *Geoderma* 83, 331–342. doi:10.1016/S0016-7061(98)00008-1

516 Hanson, P.J., Edwards, N.T., Garten, C.T., Andrews, J.A., 2000. Separating root and soil microbial
517 contributions to soil respiration: A review of methods and observations. *Biogeochemistry* 48,
518 115–146. doi:10.1023/A:1006244819642

519 Hartley, I.P., Heinemeyer, A., Ineson, P., 2007. Effects of three years of soil warming and shading on
520 the rate of soil respiration: Substrate availability and not thermal acclimation mediates
521 observed response. *Global Change Biology* 13, 1761–1770. doi:10.1111/j.1365-
522 2486.2007.01373.x

523 Hättenschwiler, S., Vitousek, P.M., 2000. The role of polyphenols in terrestrial ecosystem nutrient
524 cycling. *Trends in Ecology and Evolution*. doi:10.1016/S0169-5347(00)01861-9

525 Heller, C., Ellerbrock, R.H., Roßkopf, N., Klingenuß, C., Zeitz, J., 2015. Soil organic matter
526 characterization of temperate peatland soil with FTIR-spectroscopy: Effects of mire type and
527 drainage intensity. *European Journal of Soil Science* 66, 847–858. doi:10.1111/ejss.12279

528 Hobbie, S.E., 1992. Effects of plant species on nutrient cycling. *Trends in Ecology and Evolution* 7,
529 336–339. doi:10.1016/0169-5347(92)90126-V

530 Horner, J.D., Gosz, J.R., Cates, R.G., 1988. The role of carbon-based plant secondary metabolites in
531 decomposition in terrestrial ecosystems. *The American Naturalist* 132, 869–883.
532 doi:10.1086/284894

533 Jackson, P., 2008. *Rhododendron* in Snowdonia and a strategy for its control.

534 Jewell, M.D., Shipley, B., Paquette, A., Messier, C., Reich, P.B., 2015. A traits-based test of the home-
535 field advantage in mixed-species tree litter decomposition. *Annals of Botany* 116, 781–788.
536 doi:10.1093/aob/mcv105

537 Jones, G.L., Tomlinson, M., Owen, R., Scullion, J., Winters, A., Jenkins, T., Ratcliffe, J., Gwynn-Jones,
538 D., 2019. Shrub establishment favoured and grass dominance reduced in acid heath grassland
539 systems cleared of invasive *Rhododendron ponticum*. *Scientific Reports* 9, 2239.
540 doi:10.1038/s41598-019-38573-z

541 Kidd Haack, S., Garchow, H., Odelson, D.A., Forney, L.J., Klug, M.J., 1994. Accuracy, reproducibility,
542 and interpretation of fatty acid methyl ester profiles of model bacterial communities. *Applied*
543 *and Environmental Microbiology* 60, 2483–2493. doi:10.1080/09638280802306638

544 Kourtev, P.S., Ehrenfeld, J.G., Häggblom, M., 2003. Experimental analysis of the effect of exotic and
545 native plant species on the structure and function of soil microbial communities. *Soil Biology*
546 *and Biochemistry* 35, 895–905. doi:10.1016/S0038-0717(03)00120-2

547 Le Guillou, F., Wetterlind, W., Viscarra Rossel, R.A., Hicks, W., Grundy, M., Tuomi, S., 2015. How does
548 grinding affect the mid-infrared spectra of soil and their multivariate calibrations to texture and
549 organic carbon? *Soil Research* 53, 913–921. doi:10.1071/SR15019

550 Lechevalier, H., Lechevalier, M.P., 1988. Chemotaxonomic use of lipids, in: *Microbial Lipids*.
551 Academic Press, pp. 869–902.

552 Legendre, P., Gallagher, E.D., 2001. Ecologically meaningful transformations for ordination of species
553 data. *Oecologia* 129, 271–280. doi:10.1007/s004420100716

554 Legendre, P., Legendre, L., 1998. Numerical Ecology, 2nd Englis. ed. Elsevier, Amsterdam.

555 Liao, C., Peng, R., Luo, Y., Zhou, X., Wu, X., Fang, C., Chen, J., Li, B., 2008. Altered ecosystem carbon
556 and nitrogen cycles by plant invasion: A meta-analysis. *New Phytologist* 177, 706–714.
557 doi:10.1111/j.1469-8137.2007.02290.x

558 Llorens, P., Domingo, F., 2007. Rainfall partitioning by vegetation under Mediterranean conditions. A
559 review of studies in Europe. *Journal of Hydrology* 335, 37–54.
560 doi:10.1016/J.JHYDROL.2006.10.032

561 Luo, Y., Wan, S., Hui, D., Wallace, L.L., 2001. Acclimatization of soil respiration to warming in a tall
562 grass prairie. *Nature* 413, 622–625. doi:10.1038/35098065

563 McAnallen, L., Doherty, R., Ogle, N., 2017. Organic composition and multiphase stable isotope
564 analysis of active, degrading and restored blanket bog. *Science of the Total Environment* 599–
565 600, 1779–1790. doi:10.1016/j.scitotenv.2017.05.064

566 Met Office, 2018. Met Office Integrated Data Archive System (MIDAS).

567 Monk, K., Bass, D., Brown, N.D., Hemery, G.E., 2014. Post-clearance effects of rhododendron on the
568 fungal communities of the eastern sidelands of Lundy, Bristol Channel. *Journal of the Lundy
569 Field Society* 4, 57–70.

570 Moorhead, D.L., Callaghan, T., 1994. Effects of increasing ultraviolet B radiation on decomposition
571 and soil organic matter dynamics: a synthesis and modelling study. *Biology and Fertility of Soils*
572 18, 19–26. doi:10.1007/BF00336439

573 National Soil Resources Institute, 2019. Soil Site Report for location 269079E 344069N, 5km x 5km.
574 Cranfield, UK.

575 Orwin, K.H., Dickie, I.A., Holdaway, R., Wood, J.R., 2018. A comparison of the ability of PLFA and 16S
576 rRNA gene metabarcoding to resolve soil community change and predict ecosystem functions.

577 Soil Biology and Biochemistry 117, 27–35. doi:10.1016/j.soilbio.2017.10.036

578 Osburn, E.D., Elliott, K.J., Knoepp, J.D., Miniatt, C.F., Barrett, J.E., 2018. Soil microbial response to
579 Rhododendron understory removal in southern Appalachian forests: Effects on extracellular
580 enzymes. Soil Biology and Biochemistry 127, 50–59. doi:10.1016/J.SOILBIO.2018.09.008

581 Pattison, Z., Rumble, H., Tanner, R.A., Jin, L., Gange, A.C., 2016. Positive plant-soil feedbacks of the
582 invasive *Impatiens glandulifera* and their effects on above-ground microbial communities.
583 Weed Research 56, 198–207. doi:10.1111/wre.12200

584 Pignataro, A., Moscatelli, M.C., Mocali, S., Grego, S., Benedetti, A., 2012. Assessment of soil
585 microbial functional diversity in a coppiced forest system. Applied Soil Ecology 62, 115–123.
586 doi:10.1016/j.apsoil.2012.07.007

587 Plocher, A.E., Carvell, K.L., 1987. Population dynamics of rosebay rhododendron thickets in the
588 southern Appalachians. Bulletin of the Torrey Botanical Club 114, 121–126.

589 R Development Core Team, 2017. R: A language and environment for statistical computing. R
590 Foundation for Statistical Computing, Vienna, Austria.

591 Ramsey, P.W., Rillig, M.C., Feris, K.P., Holben, W.E., Gannon, J.E., 2006. Choice of methods for soil
592 microbial community analysis: PLFA maximizes power compared to CLPP and PCR-based
593 approaches. Pedobiologia 50, 275–280. doi:10.1016/j.pedobi.2006.03.003

594 Ratledge, C., Wilkinson, S.G., 1988. Microbial Lipids. Academic Press, London.

595 Rousk, J., Baath, E., Brookes, P., Lauber, C.L., Lozupone, C., Caporaso, J.C., Knight, R., Fierer, N., 2010.
596 Soil bacterial and fungal communities across a pH gradient in an arable soil. Applied and
597 Environmental Microbiology 4, 1340–1351. doi:10.1128/AEM.01476-12

598 Rutledge, S., Campbell, D.I., Baldocchi, D., Schipper, L.A., 2010. Photodegradation leads to increased
599 carbon dioxide losses from terrestrial organic matter. Global Change Biology 16, 3065–3074.

600 doi:10.1111/j.1365-2486.2009.02149.x

601 Schaefer, D.A., Feng, W., Zou, X., 2009. Plant carbon inputs and environmental factors strongly affect
602 soil respiration in a subtropical forest of southwestern China. *Soil Biology and Biochemistry* 41,
603 1000–1007. doi:10.1016/j.soilbio.2008.11.015

604 Schmidt, M.W.I., Torn, M.S., Abiven, S., Dittmar, T., Guggenberger, G., Janssens, I.A., Kleber, M.,
605 Kögel-Knabner, I., Lehmann, J., Manning, D.A.C., Nannipieri, P., Rasse, D.P., Weiner, S.,
606 Trumbore, S.E., 2011. Persistence of soil organic matter as an ecosystem property. *Nature* 478,
607 49–56. doi:10.1038/nature10386

608 Six, J., Conant, R.T., Paul, E.A., Paustian, K., 2002. Stabilization mechanisms of soil organic matter:
609 Implications for C-saturation of soils. *Plant and Soil*. doi:10.1023/A:1016125726789

610 Snowdonia Rhododendron Partnership, 2015. The Ecosystem Benefits of managing the invasive non-
611 native plant *Rhododendron ponticum* in Snowdonia Snowdonia Rhododendron Partnership
612 2015 Rhododendron in Snowdonia.

613 Suseela, V., Alpert, P., Nakatsu, C.H., Armstrong, A., Tharayil, N., 2016. Plant–soil interactions
614 regulate the identity of soil carbon in invaded ecosystems: Implication for legacy effects.
615 *Functional Ecology* 30, 1227–1238. doi:10.1111/1365-2435.12591

616 Tamura, M., Suseela, V., Simpson, M., Powell, B., Tharayil, N., 2017. Plant litter chemistry alters the
617 content and composition of organic carbon associated with soil mineral and aggregate fractions
618 in invaded ecosystems. *Global Change Biology* 23, 4002–4018. doi:10.1111/gcb.13751

619 Tamura, M., Tharayil, N., 2014. Plant litter chemistry and microbial priming regulate the accrual,
620 composition and stability of soil carbon in invaded ecosystems. *New Phytologist* 203, 110–124.
621 doi:10.1111/nph.12795

622 Tyler, C., Pullin, A.S., Stewart, G.B., 2006. Effectiveness of management interventions to control
623 invasion by *Rhododendron ponticum*. *Environmental Management*. doi:10.1007/s00267-005-

624 0127-0

625 Valentini, R., Matteucci, G., Dolman, A.J., Schulze, E.D., Reemann, C., Moors, E.J., Granier, A., Gross,
626 P., Jensen, N.O., Pilegaard, K., Lindroth, A., Grelle, A., Bernhofer, C., Grünwald, T., Aubinet, M.,
627 Ceulemans, R., Kowalski, A.S., Vesala, T., Rannik, Ü., Berbigier, P., Loustau, D., Guomundsson, J.,
628 Thorgeirsson, H., Ibrom, A., Morgenstern, K., Clement, R., Moncrieff, J., Montagnani, L.,
629 Minerbi, S., Jarvis, P.G., 2000. Respiration as the main determinant of carbon balance in
630 European forests. *Nature* 404, 861–865. doi:10.1038/35009084

631 Van Der Heijden, M.G.A., Bardgett, R.D., Van Straalen, N.M., 2008. The unseen majority: Soil
632 microbes as drivers of plant diversity and productivity in terrestrial ecosystems. *Ecology*
633 *Letters*. doi:10.1111/j.1461-0248.2007.01139.x

634 von Lütow, M., Kögel-Knabner, I., Ekschmitt, K., Matzner, E., Guggenberger, G., Marschner, B.,
635 Flessa, H., 2006. Stabilization of organic matter in temperate soils: Mechanisms and their
636 relevance under different soil conditions - A review. *European Journal of Soil Science*.
637 doi:10.1111/j.1365-2389.2006.00809.x

638 Wurzbürger, N., Hendrick, R.L., 2009. Plant litter chemistry and mycorrhizal roots promote a
639 nitrogen feedback in a temperate forest. *Journal of Ecology* 97, 528–536. doi:10.1111/j.1365-
640 2745.2009.01487.x

641 Wurzbürger, N., Hendrick, R.L., 2007. Rhododendron thickets alter N cycling and soil extracellular
642 enzyme activities in southern Appalachian hardwood forests. *Pedobiologia* 50, 563–576.
643 doi:10.1016/j.pedobi.2006.10.001

644 Xiao, H., Meissner, R., Seeger, J., Rupp, H., Borg, H., 2009. Effect of vegetation type and growth stage
645 on dewfall, determined with high precision weighing lysimeters at a site in northern Germany.
646 *Journal of Hydrology* 377, 43–49. doi:10.1016/j.jhydrol.2009.08.006

647 Yuste, J.C., Janssens, I.A., Carrara, A., Ceulemans, R., 2004. Annual Q10 of soil respiration reflects

648 plant phenological patterns as well as temperature sensitivity. *Global Change Biology* 10, 161–
649 169. doi:10.1111/j.1529-8817.2003.00727.x

650 Zelles, L., 1999. Fatty acid patterns of phospholipids and lipopolysaccharides in the characterisation
651 of microbial communities in soil: A review. *Biology and Fertility of Soils*.
652 doi:10.1007/s003740050533

653 Zimmermann, M., Leifeld, J., Conen, F., Bird, M.I., Meir, P., 2012. Can composition and physical
654 protection of soil organic matter explain soil respiration temperature sensitivity?
655 *Biogeochemistry* 107, 423–436. doi:10.1007/s10533-010-9562-y

656 Zogg, G.P., Zak, D.R., Ringelberg, D.B., White, D.C., MacDonald, N.W., Pregitzer, K.S., 1997.
657 Compositional and functional Shifts in Microbial Communities Due to Soil Warming. *Soil*
658 *Science Society of America Journal* 61, 475. doi:10.2136/sssaj1997.03615995006100020015x

659