

Aberystwyth University

Marine heatwaves threaten global biodiversity and the provision of ecosystem services

Smale, Dan A.; Wernberg, Thomas; Oliver, Eric C. J.; Thomsen, Mads; Harvey, Ben P.; Straub, Sandra C.; Burrows, Michael T.; Alexander, Lisa V.; Benthuisen, Jessica A.; Donat, Markus G.; Feng, Ming; Hobday, Alistair J.; Holbrook, Neil J.; Perkins-Kirkpatrick, Sarah E.; Scannell, Hillary A.; Gupta, Alex Sen; Payne, Ben L.; Moore, Pippa J.

Published in:
Nature Climate Change

DOI:
[10.1038/s41558-019-0412-1](https://doi.org/10.1038/s41558-019-0412-1)

Publication date:
2019

Citation for published version (APA):
Smale, D. A., Wernberg, T., Oliver, E. C. J., Thomsen, M., Harvey, B. P., Straub, S. C., Burrows, M. T., Alexander, L. V., Benthuisen, J. A., Donat, M. G., Feng, M., Hobday, A. J., Holbrook, N. J., Perkins-Kirkpatrick, S. E., Scannell, H. A., Gupta, A. S., Payne, B. L., & Moore, P. J. (2019). Marine heatwaves threaten global biodiversity and the provision of ecosystem services. *Nature Climate Change*, 9(4), 306-312.
<https://doi.org/10.1038/s41558-019-0412-1>

General rights

Copyright and moral rights for the publications made accessible in the Aberystwyth Research Portal (the Institutional Repository) are retained by the authors and/or other copyright owners and it is a condition of accessing publications that users recognise and abide by the legal requirements associated with these rights.

- Users may download and print one copy of any publication from the Aberystwyth Research Portal for the purpose of private study or research.
- You may not further distribute the material or use it for any profit-making activity or commercial gain
- You may freely distribute the URL identifying the publication in the Aberystwyth Research Portal

Take down policy

If you believe that this document breaches copyright please contact us providing details, and we will remove access to the work immediately and investigate your claim.

tel: +44 1970 62 2400
email: is@aber.ac.uk

Title: Marine heatwaves threaten global biodiversity and the provision of ecosystem services

Authors: Dan A. Smale^{1,2*}, Thomas Wernberg^{2*}, Eric C. J. Oliver^{3,4,5}, Mads Thomsen⁶, Ben P. Harvey^{7,8}, Sandra C. Straub², Michael T. Burrows⁹, Lisa V. Alexander^{10,11,12}, Jessica A. Benthuyssen¹³, Markus G. Donat^{10,11,14}, Ming Feng¹⁵, Alistair J. Hobday¹⁶, Neil J. Holbrook^{4,17}, Sarah E. Perkins-Kirkpatrick^{10,11}, Hillary A. Scannell¹⁸, Alex Sen Gupta^{10,11}, Ben Payne⁹, Pippa J. Moore^{7,19}

Affiliations:

1. Marine Biological Association of the United Kingdom, The Laboratory, Citadel Hill, Plymouth PL1 2PB, UK
2. UWA Oceans Institute and School of Biological Sciences, The University of Western Australia, Crawley 6009 Western Australia, Australia
3. Department of Oceanography, Dalhousie University, Halifax, Nova Scotia, B3H 4R2, Canada
4. Institute for Marine and Antarctic Studies, University of Tasmania, Hobart, Australia
5. Australian Research Council Centre of Excellence for Climate System Science, University of Tasmania, Hobart, Tasmania, Australia
6. School of Biological Sciences, University of Canterbury, Private Bag 4800, Christchurch, New Zealand
7. Institute of Biological, Environmental and Rural Sciences, Aberystwyth University, Aberystwyth SY23 3DA, UK
8. Shimoda Marine Research Center, University of Tsukuba, 5-10-1 Shimoda, Shizuoka, 415-0025, Japan
9. Department of Ecology, Scottish Association for Marine Science, Scottish Marine Institute, Oban, Argyll, PA37 1QA, Scotland, UK.
10. Climate Change Research Centre, The University of New South Wales, Sydney, New South Wales, Australia
11. Australian Research Council Centre of Excellence for Climate Extremes, The University of New South Wales, Sydney, New South Wales, Australia

12. Australian Research Council Centre of Excellence for Climate System Science, The University of New South Wales, Sydney, New South Wales, Australia
13. Australian Institute of Marine Science, Crawley, Western Australia, Australia
14. Barcelona Supercomputing Center, Barcelona, Spain
15. CSIRO Oceans and Atmosphere, Crawley, Western Australia, Australia
16. CSIRO Oceans and Atmosphere, Hobart, Tasmania, Australia
17. Australian Research Council Centre of Excellence for Climate Extremes, University of Tasmania, Hobart, Tasmania, Australia
18. School of Oceanography, University of Washington, Seattle, WA, USA
19. Centre for Marine Ecosystems Research, School of Natural Sciences, Edith Cowan University, Joondalup 6027 Western Australia, Australia

*Joint First Authors. Correspondence: dansma@mba.ac.uk, +441752426489

Article type: Letter

One Sentence Summary: Marine heatwaves alter ecosystem structure and functioning at global scales.

The global ocean has warmed significantly over the past century, with far-reaching implications for marine ecosystems¹. Concurrent with long-term persistent warming, discrete periods of extreme regional ocean warming (marine heatwaves, ‘MHWs’) have increased in frequency². Here we quantify trends and attributes of MHWs across all ocean basins and examine their biological impacts from species to ecosystems. Multiple regions within the Pacific, Atlantic and Indian Oceans are particularly vulnerable to MHW intensification, due to the co-existence of high levels of biodiversity, a prevalence of species found at their warm range edges, or concurrent non-climatic human impacts. The physical attributes of prominent MHWs varied considerably, but all had deleterious impacts across a range of biological processes and taxa, including critical foundation species (corals, seagrasses and kelps). MHWs, which will likely intensify with anthropogenic climate change³, are rapidly emerging as forceful agents of disturbance with the capacity to restructure entire ecosystems and disrupt the provision of ecological goods and services in coming decades.

Anthropogenic climate change is driving the redistribution of species and reorganization of natural systems and represents a major threat to global biodiversity^{4,5}. The biosphere has warmed significantly in recent decades with widespread implications for the integrity of ecosystems and the sustainability of the goods and services they provide^{6,7}. In addition to the near ubiquitous long-term increases in temperature, the frequency of discrete extreme warming events (‘heatwaves’) has increased^{8,9} with projections indicating they will become more frequent, more intense and longer lasting throughout the 21st Century¹⁰. While extremes occur naturally within the climate system, there is growing confidence that the observed intensification of heatwaves is due to human activities^{11,12}. The 21st Century has already experienced record-shattering atmospheric heatwaves^{8,13}, such as the 2003 European

heatwave, the Australian ‘Angry Summer’ of 2012-2013, and the European ‘Lucifer’ heatwave in 2017, with devastating consequences for human health, economies and the environment⁸.

Discrete and prolonged extreme warming events occur in the ocean as well as the atmosphere. ‘Marine heatwaves’ (MHWs) are caused by a range of processes operating across different spatial and temporal scales, from localised air-sea heat flux to large-scale climate drivers, such as the El Niño Southern Oscillation¹⁴. Regional case studies have documented how MHWs can alter the structure and functioning of entire ecosystems by causing widespread mortality, species range shifts and community reconfiguration¹⁵⁻¹⁷. By impacting ecosystem goods and services, such as fisheries landings^{18,19} and biogeochemical processes^{20,21}, MHWs can have major socioeconomic and political ramifications. Recent high-profile ocean warming events include the record-breaking 2011 ‘Ningaloo Niño’ (2010-2011) off Western Australia²², the long-lasting ‘Blob’ (2013-2016) in the northeast Pacific²³ and El Niño-related extreme warming in 2016 that affected most of the Indo-Pacific^{24,25}. These events have increased awareness of MHWs as an important climatic phenomenon affecting both physical and biological processes. Until recently, the lack of a common framework to define MHWs¹⁴ has hampered attempts to examine temporal trends or to compare physical attributes or biological impacts across different events, regions or taxa. However, by defining MHWs as periods when daily sea-surface temperatures (SSTs) exceed a local seasonal threshold (i.e. the 90th percentile of climatological SST observations) for at least 5 consecutive days¹⁴, Oliver et al.² showed that the frequency and duration of MHWs have increased significantly over the past century across most of the global ocean. Here, we used the same MHW framework¹⁴ to examine observed trends in the annual number of MHW days and the implications for marine ecosystems globally. We incorporated existing data on

marine taxon richness, the proportion of species found at their warm range edges and non-climatic human impacts to identify regions of high vulnerability, where increased occurrences of MHWs overlap with areas of high biodiversity, temperature sensitivity or concurrent anthropogenic stressors. We also conducted a meta-analysis on the impacts of MHWs, by examining ecological responses to eight prominent MHW events that have been studied in sufficient detail for formal analysis. We examined 1049 ecological observations, recalculated to 182 independent effect sizes from 116 research papers that examined responses of organisms, populations and communities to MHWs. We also explored relationships between the occurrence of MHWs and the health of three globally-significant foundation species (coral, seagrass and kelp) from three independent time series that were collected at sufficient spatiotemporal resolutions to explicitly link ecological responses to MHWs. Finally, we reviewed the literature on MHWs for evidence of impacts of these events on goods and services to human society.

The total number of MHW days per year, based on five quasi-global SST datasets, has increased globally throughout the 20th and early 21st Century (Fig. 1A). As a global average, there are over 50% more MHW days per year in the latter part of the instrumental record (1987-2016) compared to the earlier part (1925-1954)², with most regions experiencing increases in the number of MHW days (Fig 1B). Global patterns of marine taxon richness (Fig. 1C) overlaid with trends in annual MHW days reveal regions where increased MHW occurrences can influence biologically diverse regions, in particular, southern Australia, the Caribbean Sea, and the coastline bounding the mid-eastern Pacific (Fig 1D). Given that warm range edge populations are likely to be the most impacted by MHWs (as thermal tolerances are exceeded during anomalously high temperatures), regions which support a high proportion of species found near their warm range edge will be particularly vulnerable to

increased MHW activity (Fig 1E). Several regions were identified as having experienced marked increases in MHW days and also supporting a high proportion of species found near their warm range edges (Fig 1F), with marine ecosystems in the southwest Pacific and the mid-west Atlantic particularly at risk. Furthermore, regions where rapid increases in the annual number of MHW days overlap with existing high-intensity non-climate human stressors (Fig 1G) include the central west Atlantic, the northeast Atlantic and the northwest Pacific (Fig. 1H). Here, existing regional pressures, including overfishing and pollution, have the potential to exacerbate MHW impacts, and vice versa.

Examination of eight prominent (and sufficiently studied) MHWs showed they varied greatly with respect to spatial extent (by a factor of >15, Fig. 2A, Fig. S1), duration (10 to 380 days) and maximum intensity (3.5 to 9.5°C above climatological SST) (Fig. 2A). It should be noted that several MHWs were primarily driven by large-scale El Niño events which, by their nature, affected ocean climate at large spatial scales. Here, the largest contiguous MHW associated with each ENSO event was identified and characterised with MHW metrics. Our meta-analysis of ecological impacts (based on Hedges *g* effect sizes to account for bias associated with small sample sizes²⁶) detected an overall negative effect of MHWs on biota across research papers, events, taxa, and response variables ($E = -0.93$; 95 CI = 0.22; $Q = 6303$, $df = 181$; $p_{\text{heterogeneity}} < 0.001$, $I^2 = 97.13$). All eight MHWs were associated with negative ecological impacts although the mean negative effect sizes were not significantly different from zero for the two events with lowest sample sizes (Fig. 2B). There was no clear relationship between the severity of the MHW (derived from normalized MHW intensity and duration) and their observed impacts (Fig. 2B). All taxonomic groups, with the exception of fishes and mobile invertebrates, responded negatively to MHWs with birds and corals being most adversely affected (Fig. 2C). The positive fish response was, in part, driven by new

incursions of tropical species into impacted temperate regions¹⁶. Corals were directly affected by these MHWs, as extreme absolute temperatures resulted in widespread bleaching and mortality^{27,28}, whereas birds were indirectly impacted through changes in prey availability²⁹. Birds and corals are also particularly sensitive to longer term increases in sea temperature associated with ocean warming³⁰. Overall, our analyses suggest that sessile taxa were more impacted by MHWs than mobile and planktonic taxa (Fig. 2C), perhaps because mobile taxa generally have higher thermal tolerances than less active or sessile taxa³¹ and highly mobile species can quickly migrate in response to rapidly changing conditions¹⁶. All ecological response variables were negatively affected by MHWs, although growth and primary production were not significantly different from zero (Fig. 2D). Negative impacts were greatest for coral bleaching, survival, and reproduction (Fig. 2D), a pattern consistent with effects of warming in manipulative experiments³².

To examine links between MHWs and ecological responses, we conducted additional analysis at the species level to test the prediction that populations found towards the warm-water limit (i.e. equatorward range edge) of a species' distribution would be more negatively impacted by MHWs than other populations. From the database described above, we extracted all species level observations (645 observations from 302 species) and for each population we classified their relative position within the species range by expressing the local average SST as a proportion of the difference between the 10th and 90th percentile temperatures experienced through the species geographical range. Critically, the most negative responses to MHWs were seen in populations found towards their warm range edge (Fig. 2E), implying that extreme temperatures exceeded thermal thresholds with adverse effects. Across all species-level observations, there was a negative relationship between any given population's location within the species' range and the direction and magnitude of the MHW effect (Fig.

2F). This indicates that populations residing near the warm limit of a given species range are particularly vulnerable to warming events and range contractions are likely to occur in response to more frequent MHWs. Indeed, recent observations have shown that equatorward range edges of both plant and animal species have retracted poleward by >100 km following severe MHW events^{17,33,34}.

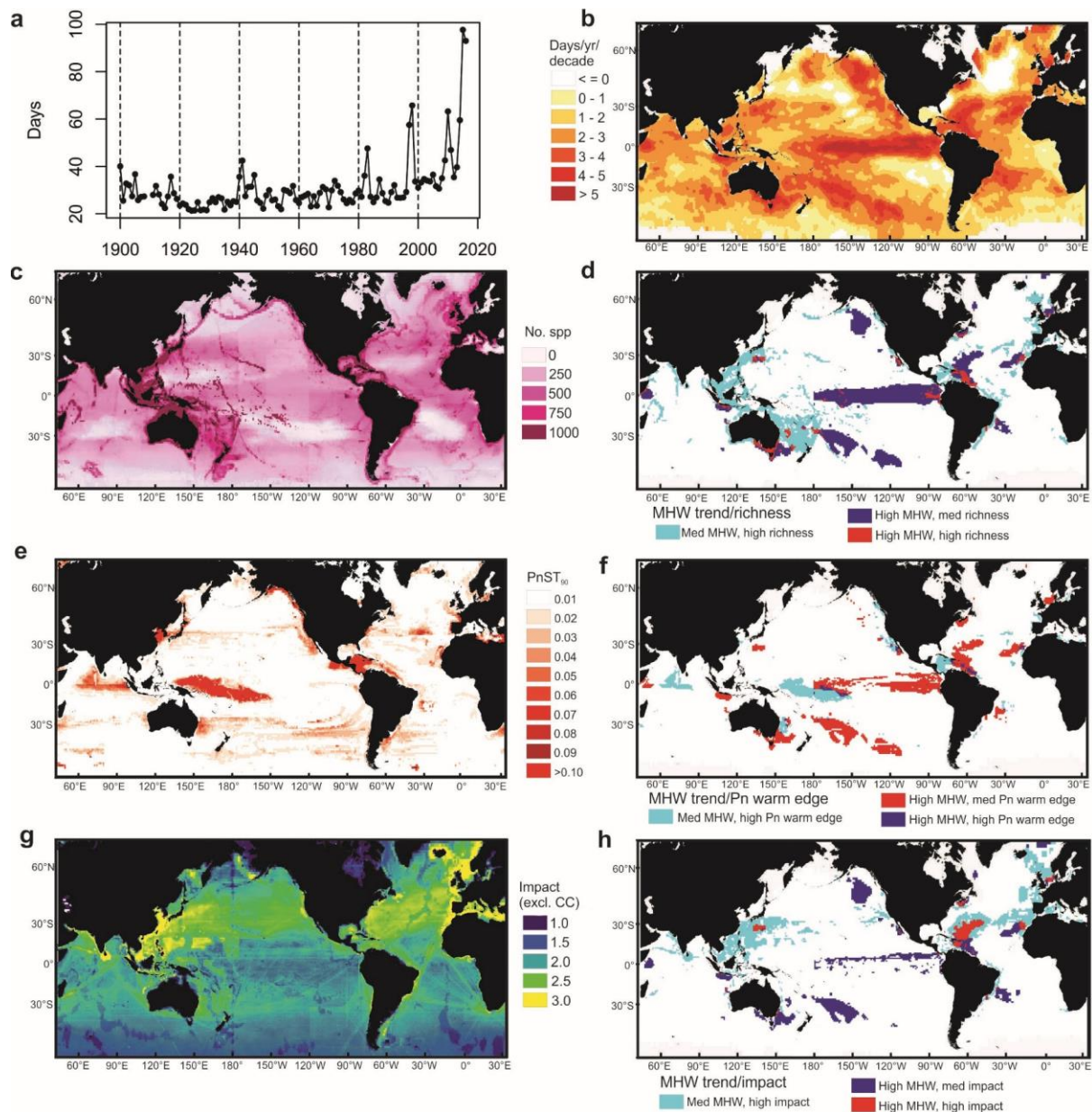
An examination of long-term time series on the health of three globally important foundation taxa showed that increased annual number of MHW days was correlated with (i) increased coral bleaching, (ii) decreased seagrass density and (iii) decreased kelp biomass (Fig. 3). Even though environmental variables such as storms, nutrients and light are known to strongly influence the health of these critical habitat-formers³⁵, the annual number of MHW days alone was strongly and significantly correlated with observed ecological performance and, crucially, had consistently stronger correlative relationships than more frequently used measures of ocean temperature (i.e. mean and maximum SST, see Table S1). An increased number of MHW days was significantly correlated to decreased ecological health of populations of all three foundation taxa, indicating the importance of discrete extreme ocean warming events in driving ecosystem structure^{16,36}.

A wide range of ecological goods and services derived from marine ecosystems have been severely impacted by recent MHWs (Table 1). For example, the 2011 Ningaloo Niño caused widespread loss of biogenic habitat, depleted biodiversity, disruption to nutrient cycles and shifts in the abundance and distribution of commercial fisheries species off Western Australia (Table 1). Similarly, recent MHWs in the Mediterranean Sea have been linked to local extinctions, decreased rates of natural carbon sequestration, loss of critical habitat and diminished socioeconomic value (Table 1). These services have substantial societal benefit,

with hundreds of millions of people benefitting from coastal marine ecosystems^{37,38}. As such, managing and mitigating the deleterious effects of MHWs on the provision of ecosystem services is a major challenge for coastal societies.

Globally, MHWs are becoming more frequent and prolonged, and record-breaking events have been observed in most ocean basins in the past decade². To date, the main focus of ecological research has been on trends in mean climate variables, yet discrete extreme events are emerging as pivotal in shaping ecosystems, by driving sudden and dramatic shifts in ecological structure and functioning. Given the confidence in projections of intensifying extreme warming events with anthropogenic climate change^{8,39}, marine conservation and management approaches must consider MHWs and other extreme climatic events if they are to maintain and conserve the integrity of highly valuable marine ecosystems over the coming decades.

214
215



216
217
218
219
220
221
222
223
224
225
226
227
228
229
230
231
232
233

Fig. 1. Global patterns of MHW intensification, marine biodiversity, proportions of species found at their warm range edge and concurrent human impacts. **a,b**, Globally averaged time-series of the annual number of MHW days and trends in the annual number of MHW days (between 1925-1954 and 1987-2016) across the global ocean. **c,e,g**, Existing data on marine biodiversity (**c**), the proportion of species within the local species pool found near their warm range edge (**e**), and non-climatic human stressors (**g**) were combined with MHW intensification data. **d,f,h**, The resultant bivariate maps identify regions of high diversity value that may be impacted by MHWs (**d**), high thermal sensitivity of species which may have been particularly vulnerable to increased MHWs (**f**) and high levels of non-climatic human stressors where MHW intensification has impacted concurrently upon marine ecosystems (**h**).

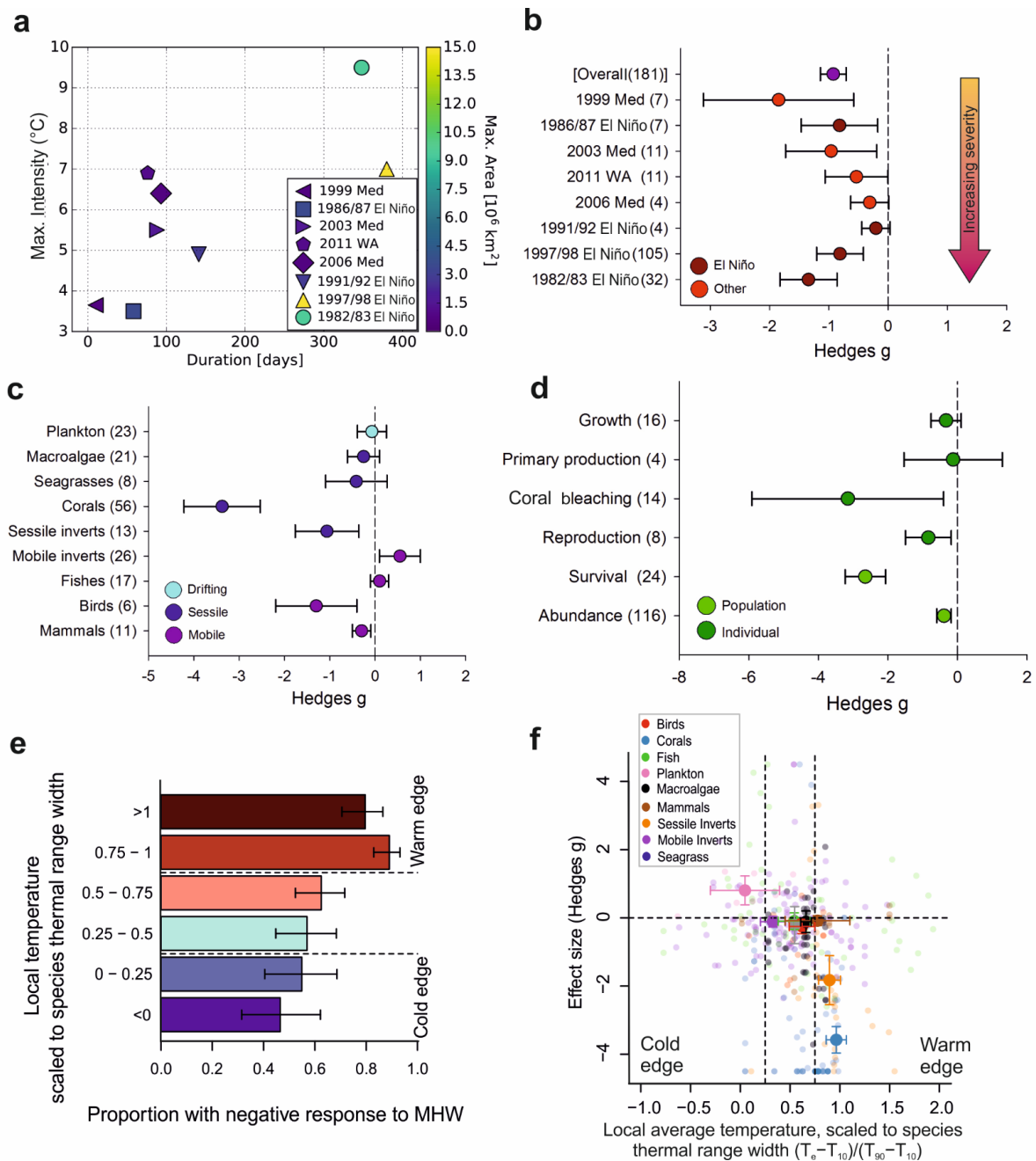


Fig. 2. Ecological impacts of MHWs as determined by a meta-analysis of responses to eight prominent MHW events. **a,b**, The attributes of the eight MHW events used in the meta-analysis (**a**) and the overall effect of each MHW event across all ecological responses (**b**). **c,d**, The effect of MHWs on major taxonomic groups (**c**) and types of ecological responses (**d**). The number of independent observations for each category are shown in parentheses and values represent mean ($\pm 95\%$ CI) effect sizes (Hedges g , to account for bias associated with small sample sizes). **e,f**, Populations located towards the warm-water limit of species' distributions tended to respond more negatively to MHWs (**e**) with effect sizes (Hedges g , $\pm 95\%$ CI) generally becoming more negative for warmer equatorward range-edge populations (**f**). Plots are based on responses of 685 species-level observations; bold symbols in (**f**) indicate means for each major taxonomic group and faded symbols show individual studies (T_e temperature at effect location, T_{10} , T_{90} , 10% and 90% species range temperatures). Horizontal (**e**) and vertical dashed lines (**f**) delineate the lower and upper quartiles of species' thermal ranges.

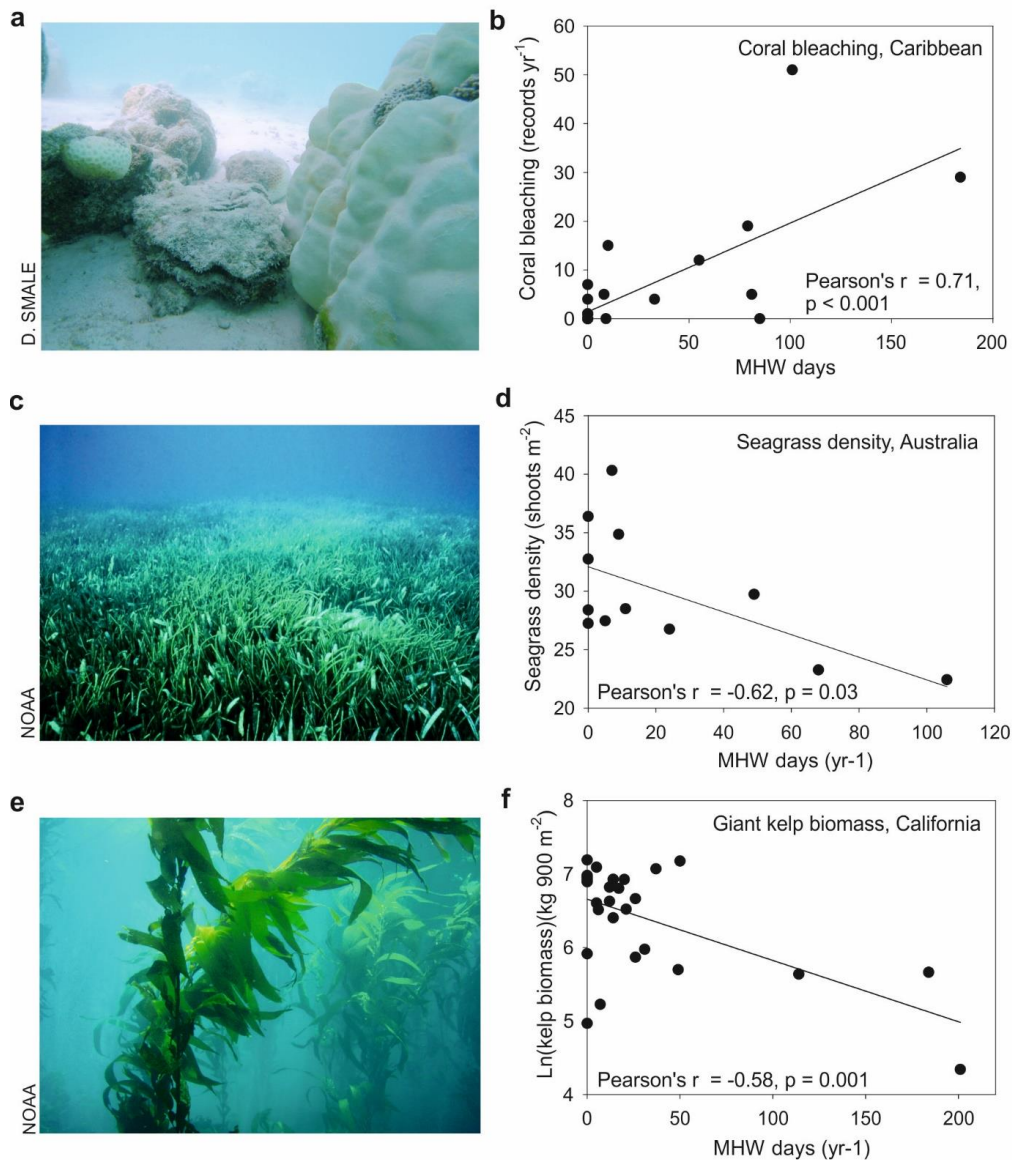


Fig. 3. Impacts of MHWs on foundation species. **a,b**, Severe MHWs, such as those associated with the extreme El Niño events of 1997/98 and 2015/16, have caused widespread bleaching and mortality of reef building corals (**a**). Analysis of annual coral bleaching records from the Caribbean Sea/Gulf of Mexico region (1983-2010, data from NOAA Coral Reef Watch) showed that the number of MHW days per year was positively correlated with the frequency of coral bleaching observations (**b**). **c,d**, Seagrass meadows yield critical ecosystem services, including carbon sequestration and biogenic habitat provision, yet recent MHWs have impacted seagrass populations in several regions (**c**). Monitoring data from independent sites in Cockburn Sound, Western Australia (2003-2014, data provided by Cockburn Sound Management Council) indicated that the number of MHW days recorded in the previous year was negatively correlated with seagrass (*Posidonia sinuosa*) shoot density (**d**). **e,f**, Kelp forests represent critical habitats along temperate coastlines but extreme temperatures experienced during MHWs can cause widespread mortality and deforestation (**e**). Satellite-derived estimates of giant kelp (*Macrocystis pyrifera*) biomass along the coastline of California/Baja California (1984-2011, data from Santa Barbara Coastal Long-term Ecological Research program) showed that kelp biomass was negatively correlated with the number of MHW days recorded during the previous year (**f**).

Table 1. Impacts of MHWs on services provided by marine ecosystems (definitions of ecosystem services adapted from The Economics of Ecosystems and Biodiversity, TEEB, developed by UNEP). Evidence of impacts was collated from specific MHWs: (a) 1982/83 El Niño event, (b) 1997/98 El Niño event, (c) 1999 Mediterranean MHW, (d) 2003 Mediterranean MHW, (e) 2011 Western Australian MHW, (f) 2012 Northwest Atlantic MHW, (g) the 2013-2016 Northeast Pacific ‘Blob’, and (h) the 2015/2016 El Niño event in northern Australia.

Service type	Ecosystem service	Impacts	Refs
Provisioning	Living resources (non-food)	- Extreme temperatures caused widespread mortality, local extinctions and range contractions of a diversity of taxa (c,d,e)	15,17,40
	Food	- Changes in the distributions and abundances of commercial fisheries species (b,e,f)	18,33,41
Regulating	Carbon sequestration and storage	- Reduced carbon burial and sequestration due to decreased growth and high mortality of seagrasses (d,e)	36,42
	Moderation of extreme events	- Complex, three-dimensional biogenic benthic habitat was replaced by simple poorly-structured habitat, altering hydrodynamics and sediment transport and reducing natural coastal defense (a,b)	43,44
	Nutrient cycling	- Increased stratification and extreme temperatures caused decreased phytoplankton production and nutrient turnover (b,g) - Widespread loss of productive benthic habitats (seagrass, kelp forests) disrupting carbon and nitrogen cycling (d,e)	16,20,36,45
	Biological control	- Anomalous warming events associated with influx of invasive non-native species (e)	33
Habitat or supporting services	Habitats for species	- Local extinctions, range contractions and high mortality rates of habitat-forming corals, seagrasses and macroalgae, resulting in simplified habitat structure and depleted local biodiversity (a,b,e,h)	34,42-44,46-48
Cultural	Tourism and recreation	- Locations affected by intense warming events are less attractive for recreational activities and have decreased socioeconomic value (d,g,h)	15,21,49,50

References

- IPCC. *Working group 1 contribution to the IPCC 5th assessment report (AR5), Climate Change 2013: The physical science basis*. (2013).
- Oliver, E. *et al.* Longer and more frequent marine heatwaves over the past century. *Nat. Commun.* **9**, 1324 (2018).
- Frölicher, T. L., Fischer, E. M. & Gruber, N. Marine heatwaves under global warming. *Nature* **560**, 360-364, doi:10.1038/s41586-018-0383-9 (2018).
- Chen, I.-C., Hill, J. K., Ohlemüller, R., Roy, D. B. & Thomas, C. D. Rapid range shifts of species associated with high levels of climate warming. *Science* **333**, 1024-1026, doi:10.1126/science.1206432 (2011).
- Burrows, M. T. *et al.* Geographical limits to species-range shifts are suggested by climate velocity. *Nature* **507**, 492, doi:10.1038/nature12976 (2014).
- Cardinale, B. J. *et al.* Biodiversity loss and its impact on humanity. *Nature* **486**, 59-67, doi:<http://www.nature.com/nature/journal/v486/n7401/abs/nature11148.html#supplementary-information> (2012).
- Pecl, G. T. *et al.* Biodiversity redistribution under climate change: Impacts on ecosystems and human well-being. *Science* **355**, doi:10.1126/science.aai9214 (2017).
- Coumou, D. & Rahmstorf, S. A decade of weather extremes. *Nature Clim. Change* **2**, 491-496 (2012).
- Perkins, S. E., Alexander, L. V. & Nairn, J. R. Increasing frequency, intensity and duration of observed global heatwaves and warm spells. *Geophys. Res. Lett.* **39**, L20714, doi:10.1029/2012gl053361 (2012).

- 10 Meehl, G. & Tebaldi, C. More intense, more frequent, and longer lasting heat waves in the 21st Century. *Science* **305**, 994-997, doi:10.1126/science.1098704 (2004).
- 11 Trenberth, K. E., Fasullo, J. T. & Shepherd, T. G. Attribution of climate extreme events. *Nat. Clim. Change* **5**, 725-730, doi:10.1038/nclimate2657 (2015).
- 12 Oliver, E. C. J. *et al.* The unprecedented 2015/16 Tasman Sea marine heatwave. *Nature Communications* **8**, 16101, doi:10.1038/ncomms16101
<https://www.nature.com/articles/ncomms16101#supplementary-information> (2017).
- 13 IPCC. *Managing the Risks of Extreme Events and Disasters to Advance Climate Change Adaptation. A Special Report of Working Groups I and II of the Intergovernmental Panel on Climate Change.* 582 (Cambridge University Press, Cambridge, UK, and New York, NY, USA, 2012).
- 14 Hobday, A. J. *et al.* A hierarchical approach to defining marine heatwaves. *Prog. Oceanogr.* **141**, 227-238 (2016).
- 15 Garrabou, J. *et al.* Mass mortality in Northwestern Mediterranean rocky benthic communities: effects of the 2003 heat wave. *Glob. Change Biol.* **15**, 1090-1103, doi:10.1111/j.1365-2486.2008.01823.x (2009).
- 16 Wernberg, T. *et al.* An extreme climatic event alters marine ecosystem structure in a global biodiversity hotspot. *Nat. Clim. Change* **3**, 78-82, doi:10.1038/nclimate1627 (2013).
- 17 Smale, D. A. & Wernberg, T. Extreme climatic event drives range contraction of a habitat-forming species. *Proc. Roy. Soc. B Biol. Sci.* **280**, 20122829 doi:10.1098/rspb.2012.2829 (2013).
- 18 Mills, K. E. *et al.* Fisheries management in a changing climate lessons from the 2012 ocean heat wave in the Northwest Atlantic. *Oceanography* **26**, 191-195 (2013).
- 19 Cavole, L., M. *et al.* Biological impacts of the 2013-2015 warm-water anomaly in the Northeast Pacific: Winners, losers, and the future. *Oceanography* **29**, 273-285 (2016).
- 20 Chavez, F. P. *et al.* Biological and chemical consequences of the 1997-1998 El Niño in central California waters. *Prog. Oceanogr.* **54**, 205-232, doi:[http://dx.doi.org/10.1016/S0079-6611\(02\)00050-2](http://dx.doi.org/10.1016/S0079-6611(02)00050-2) (2002).
- 21 McCabe, R. M. *et al.* An unprecedented coastwide toxic algal bloom linked to anomalous ocean conditions. *Geophys. Res. Lett.* **43**, 10,366-310,376, doi:10.1002/2016GL070023 (2016).
- 22 Pearce, A. F. & Feng, M. The rise and fall of the “marine heat wave” off Western Australia during the summer of 2010/2011. *J. Mar. Syst.* **111-112**, 139-156, doi:<http://dx.doi.org/10.1016/j.jmarsys.2012.10.009> (2013).
- 23 Bond, N. A., Cronin, M. F., Freeland, H. & Mantua, N. Causes and impacts of the 2014 warm anomaly in the NE Pacific. *Geophys. Res. Lett.* **42**, 3414-3420, doi:10.1002/2015gl063306 (2015).
- 24 Hughes, T. P. *et al.* Spatial and temporal patterns of mass bleaching of corals in the Anthropocene. *Science* **359**, 80-83, doi:10.1126/science.aan8048 (2018).
- 25 Benthuisen, J. A., Oliver, E. C. J., Feng, M. & Marshall, A. G. Extreme marine warming across tropical Australia during austral summer 2015-2016. *J. Geophys. Res. Oceans* **online**, n/a-n/a, doi:10.1002/2017JC013326 (2018).
- 26 Borenstein, M., Hedges, L. V., Higgins, J. P. T. & Rothstein, H. R. *Introduction to Meta-Analysis.* (John Wiley & Sons, Ltd. West Sussex, UK., 2009).
- 27 Moore, J. A. Y. *et al.* Unprecedented Mass Bleaching and Loss of Coral across 12° of Latitude in Western Australia in 2010-11. *PLoS ONE* **7**, e51807, doi:10.1371/journal.pone.0051807 (2012).
- 28 Smith, T. B., Glynn, P. W., Maté, J. L., Toth, L. T. & Gyory, J. A depth refugium from catastrophic coral bleaching prevents regional extinction. *Ecology* **95**, 1663-1673, doi:10.1890/13-0468.1 (2014).
- 29 Vargas, F. H., Harrison, S., Rea, S. & Macdonald, D. W. Biological effects of El Niño on the Galápagos penguin. *Biol. Conserv.* **127**, 107-114, doi:<http://dx.doi.org/10.1016/j.biocon.2005.08.001> (2006).
- 30 Poloczanska, E. S. *et al.* Global imprint of climate change on marine life. *Nat. Clim. Change* **3**, 919-925, doi:10.1038/nclimate1958 (2013).
- 31 Somero, G. N. The physiology of climate change: how potentials for acclimatization and genetic adaptation will determine ‘winners’ and ‘losers’. *J. Exp. Biol.* **213**, 912-920, doi:10.1242/jeb.037473 (2010).
- 32 Harvey, B. P., Gwynn-Jones, D. & Moore, P. J. Meta-analysis reveals complex marine biological responses to the interactive effects of ocean acidification and warming. *Ecol. Evol.* **3**, 1016-1030, doi:10.1002/ece3.516 (2013).
- 33 Pearce, A. *et al.* *The “marine heat wave” off Western Australia during the summer of 2010/11. Fisheries Research Report No. 222.* (Department of Fisheries, 2011).
- 34 Wernberg, T. *et al.* Climate driven regime shift of a temperate marine ecosystem. *Science* **353**, 169-172 (2016).

- 35 Halpern, B. S., Selkoe, K. A., Micheli, F. & Kappel, C. V. Evaluating and ranking the vulnerability of global marine ecosystems to anthropogenic threats. *Conserv. Biol.* **21**, 1301-1315, doi:10.1111/j.1523-1739.2007.00752.x (2007).
- 36 Marba, N. & Duarte, C. M. Mediterranean warming triggers seagrass (*Posidonia oceanica*) shoot mortality. *Glob. Change Biol.* **16**, 2366-2375 (2010).
- 37 Liqueste, C. *et al.* Current status and future prospects for the assessment of marine and coastal ecosystem services: A systematic review. *PLOS ONE* **8**, e67737, doi:10.1371/journal.pone.0067737 (2013).
- 38 Cavanagh, R. D. *et al.* Valuing biodiversity and ecosystem services: a useful way to manage and conserve marine resources? *Proc. Roy. Soc. B Biol. Sci.* **283**, doi:10.1098/rspb.2016.1635 (2016).
- 39 Cai, W. *et al.* Increased frequency of extreme La Nina events under greenhouse warming. *Nat. Clim. Change* **5**, 132-137, doi:10.1038/nclimate2492
- <http://www.nature.com/nclimate/journal/v5/n2/abs/nclimate2492.html#supplementary-information> (2015).
- 40 Cerrano, C. *et al.* A catastrophic mass-mortality episode of gorgonians and other organisms in the Ligurian Sea (North-western Mediterranean), summer 1999. *Ecol. Lett.* **3**, 284-293, doi:10.1046/j.1461-0248.2000.00152.x (2000).
- 41 Ñiquen, M. & Bouchon, M. Impact of El Niño events on pelagic fisheries in Peruvian waters. *Deep Sea Res Pt 2* **51**, 563-574, doi:<http://dx.doi.org/10.1016/j.dsr2.2004.03.001> (2004).
- 42 Thomson, J. A. *et al.* Extreme temperatures, foundation species, and abrupt ecosystem change: an example from an iconic seagrass ecosystem. *Glob. Change Biol.* **21**, 1463-1474, doi:10.1111/gcb.12694 (2015).
- 43 Brown, B. E. & Suharsono. Damage and recovery of coral reefs affected by El Niño related seawater warming in the Thousand Islands, Indonesia. *Coral Reefs* **8**, 163-170, doi:10.1007/bf00265007 (1990).
- 44 Edwards, M. S. Estimating scale-dependency in disturbance impacts: El Niños and giant kelp forests in the northeast Pacific. *Oecologia* **138**, 436-447, doi:10.1007/s00442-003-1452-8 (2004).
- 45 Whitney, F. A. Anomalous winter winds decrease 2014 transition zone productivity in the NE Pacific. *Geophys. Res. Lett.* **42**, 428-431, doi:10.1002/2014gl062634 (2015).
- 46 Glynn, P. W. El Niño-associated disturbance to coral reefs and post disturbance mortality by *Acanthaster planci* Mar. *Ecol. Prog. Ser.* **26**, 395-300 (1985).
- 47 Le Nohaïc, M. *et al.* Marine heatwave causes unprecedented regional mass bleaching of thermally resistant corals in northwestern Australia. *Sci. Rep.* **7**, 14999, doi:10.1038/s41598-017-14794-y (2017).
- 48 Hughes, T. P. *et al.* Global warming and recurrent mass bleaching of corals. *Nature* **543**, 373, doi:10.1038/nature21707 (2017).
- 49 Rodrigues, L. C., van den Bergh, J. C. J. M., Loureiro, M. L., Nunes, P. A. L. D. & Rossi, S. The cost of Mediterranean sea warming and acidification: a choice experiment among scuba divers at Medes Islands, Spain. *Environ Resource Econ.* 1-23, doi:10.1007/s10640-015-9935-8 (2015).
- 50 Prideaux, B., Thompson, M., Pabel, A. & Anderson, A. C. in *CAUTHE 2017: Time For Big Ideas? Rethinking The Field For Tomorrow* (eds C. Lee, S. Filep, J. N. Albrecht, & W. J. L. Coetzee) (Dunedin, New Zealand: Department of Tourism, University of Otago, 2017).

Acknowledgments: Concepts and analyses were developed during 3 workshops organised by an international working group on marine heatwaves (www.marineheatwaves.org). Workshops were primarily funded by a University of Western Australia Research Collaboration Award to TW and a Natural Environment Research Council (UK) International Opportunity Fund awarded to DS (NE/N00678X/1). DS is supported by an Independent Research Fellowship (NE/K008439/1) awarded by the Natural Environment Research Council (UK). The Australian Research Council supported TW (FT110100174 and DP170100023), EO (CE110001028), MGD (DE150100456). NH and LA are supported by the ARC Centre of Excellence for Climate Extremes (CE170100023). PM is supported by a Marie Curie Career Integration Grant (PCIG10-GA-2011-303685) and a Natural Environment Research Council (UK) Grant (NE/J024082/1). SS was supported by an Australian Government RTP Scholarship. This work contributes to the World Climate Research Programme Grand

Challenge on Extremes, the NESP Earth Systems and Climate Change Hub Project 2.3 (Component 2) on the predictability of ocean temperature extremes, and the interests and activities of the International Commission on Climate of IAMAS/IUGG.

Corresponding author: Correspondence to Dan Smale (dansma@mba.ac.uk)

Author contributions: DS and TW conceived the initial idea; all authors contributed intellectually to its development. DS, TW, EO, NH co-convened the workshops. EO led the development of the MHW analysis, which was supported by NH, LA, JB, MD, MF, AH, SP, HS and ASG. The meta-analysis of ecological impacts was conducted by MT, BH, SS, MB and PM. DS led manuscript preparation with significant input from all authors.

Methods

1. Definition of MHWs and analysis of multi-decadal trends

Marine heatwaves (MHWs) were identified from observational sea surface temperature (SST) time series using the definition proposed by Hobday et al.¹⁴, whereby a MHW is defined as a “*discrete prolonged anomalously warm water event at a particular location*” with each of those terms (anomalously warm, prolonged, discrete) quantitatively defined and justified for the marine context. Specifically, “*discrete*” implies the MHW is an identifiable event with clear start and end dates, “*prolonged*” means it has a duration of at least five days, and “*anomalously warm*” means the temperature is above a climatological threshold (in this case the seasonally-varying 90th percentile). The climatological mean and threshold were calculated over a base period of 1983-2012. For each day-of-year, a pool of days across all years in the climatology period and within an 11-day window was taken as a sample, from which the mean and 90th percentile threshold were calculated. The climatological mean and threshold were then further smoothed using a 30-day running window. When two successive events occur with a break of two days or less, this was deemed to represent a single continuous event. The code used to identify MHWs and calculate key MHW metrics following this definition is freely available and has been implemented in Python (<https://github.com/ecjoliver/marineHeatWaves>) and R (<https://robwschlegel.github.io/heatwaveR>). MHWs detected using this definition were then characterized by a set of metrics, including duration and intensity (i.e. the maximum daily temperature above the seasonal climatology during the event). We then examined an annual time series of “total MHW days”, which is the sum of days categorized as MHWs in any given year.

Global time series and regional trends in total MHW days were derived using a combination of satellite-based, remotely-sensed SSTs and *in situ*-based seawater temperatures. First, total MHW days were calculated globally over 1982-2015 at 1/4° resolution from the National Oceanic and Atmospheric Administration (NOAA) Optimum Interpolation (OI) SST V2 high resolution data. Then, proxies for total MHW days globally over 1900-2016 were developed based on five monthly gridded SST datasets (HadISST v1.1, ERSST v5, COBE 2, CERA-20C and SODA si.3). A final proxy time series was calculated by averaging across the five datasets. The five monthly data sets were used since no global daily SST observations are available prior to 1982. From these proxy time-series we calculated (i) the difference in mean MHW days over the 1987-2016 and 1925-1954 periods and (ii) a globally-averaged times series of total MHW days. Further details on this method and resulting proxy data can be found in Oliver et al.². Note that these calculations use the same climatology period as above, 1983-2012.

2. Global patterns of MHW intensification and overlaps with known hotspots of marine biodiversity, temperature-sensitive populations and non-climatic human stressors

We combined regional trends in MHW days with pre-existing data on marine biodiversity, the proportion of species found near their warm range edges, and non-climatic human stressors to predict where MHW intensification may be a particular threat to biodiversity hotspots or temperature-sensitive communities, or be exacerbated by concurrent stressors. Biodiversity hotspots were determined using published marine taxon richness data⁵¹, which were accumulated from projected species distributions from the Aquamaps project⁵². Patterns in taxon richness (Fig. 1C) showed characteristically high levels in coastal areas and in tropical regions. We also calculated the proportion of species in the local species pool that were near their warm range edge to determine locations where MHWs might be more likely to have a strong negative effect

(as shown in Fig. 2F). We used 16,582 species global distribution maps from the Aquamaps project⁵², previously used to assess likely patterns of biodiversity change⁵¹, to represent global marine biodiversity. For each 1° latitude/longitude grid cell we counted the number of species present for which sea surface temperature, derived as the 1960-2009 average annual temperature from the Hadley Centre HadISST v1.1 dataset, exceeded the 90th percentile temperature of their geographical range, and divided this by the total number of species present. Aside from some artifacts where species geographical limits coincide with FAO (Food and Agriculture Organization of the United Nations) region boundaries, a feature prevalent in other studies using these datasets⁵³, the resulting map (Fig. 1E) showed areas with higher proportions of species at their warm range edges. Major concentrations (proportions >0.1 of all species) of warm-edge species were seen in the Eastern Mediterranean, the southern Red Sea, the Caribbean Sea, the Mexican part of the North Pacific and a large part of the tropical west Pacific. Locally higher proportions of warm-edge species were also seen along coastlines of Europe, western USA and Canada, North Africa and in the Yellow Sea.

Information on stressors were obtained from supplementary online resources provided by Halpern et al.⁵⁴. We additively combined multiple impact layers (demersal destructive fishing, demersal non-destructive high bycatch, demersal non-destructive low bycatch, ocean acidification, ocean pollution, pelagic high bycatch, pelagic low bycatch, shipping and UV) into a single cumulative impacts layer (Fig. 1E). Fishing intensity layers were obtained by apportioning reported catches in FAO areas by modelled productivity data for latitude/longitude cells. Shipping impacts were derived from a 12-month (2003-2004) global ship observing scheme, and the same data was used with ports data to give a measure of ocean pollution. Surface UV information was obtained from the GSFC TOMS EP/TOMS satellite program at

NASA. Ocean acidification data came from globally modelled aragonite saturation state. Details of the quantification of these layers are given in Halpern et al.^{54,55}. Layers that included ocean warming variables were specifically excluded due to likely co-variance (to varying extents) with MHW metrics. The cumulative impacts layer was then re-projected and resampled onto the same 1°×1° grid as for trends in total MHW days and biodiversity data. Maps of the combinations of medium to high trends in total MHW days and medium to high values of taxon richness (Fig. 1C) or cumulative impacts (Fig. 1E) were created by splitting the data into classes based on the percentiles of the distribution of each variable (0-50% low, 50-90% medium, >90% high). Combined MHW trend/richness and MHW trend/impact layers were assigned to categories according to the classes of each contributing layer. While spatial bias due to variability in sampling effort may influence, to some degree, global-scale datasets on physical and biological variables, the datasets used in the current study have near-complete global coverage and represent the best approximations available for temperature⁵⁶, species richness and distributions⁵⁷ and human stressors⁵⁴.

3. Meta-analysis of ecological responses to MHWs

Dependent and independent variables, literature searches and hypothesis

The meta-analysis followed PRISMA (Preferred Reporting Items for Systematic Reviews and Meta-Analyses) guidelines, which provide an evidence-based minimum set of requirements for conducting and reporting meta-analyses (Fig. S2). We searched for peer reviewed studies that compared six types of biological ‘performance response’ (survival, abundance, growth, reproduction, primary production or coral bleaching) that reported data variation, before and after any of eight well-described periods of extreme warming (El Niño related events in 1982/83, 1986/87, 1991/92 and 1997/98, the Mediterranean MHWs of 1999, 2003 and 2006, and the 2011

MHW in Western Australia). Relevant studies were identified from two literature searches. First, we conducted a standardized Web of Science search, with search terms related to climate change, heat waves, marine systems, and the eight MHWs mentioned above. We used the following specific search string: ('TS=((marine AND ("heat wave" OR heatwave)) OR El Niño OR La Niña OR ENSO OR (marine AND warming))'), identifying 29,395 potentially relevant papers. We read all abstracts from these papers and then obtained the full manuscripts of the papers that in their title, abstract, or keywords, indicated that relevant data could be collected (= 517 papers). We read all these papers in detail to identify 116 papers that fulfilled our data criteria. For each of the identified publications we extracted all reported mean performance response, data dispersion and sample sizes, from text, tables and figures with Plot Digitizer™ (<http://plotdigitizer.sourceforge.net/>). Impact studies were widely distributed across the global ocean; impact studies relating to ENSO-associated MHWs were spread across the Pacific and Indian Oceans whereas impact studies relating to Mediterranean and Australian MHWs were conducted across a smaller area (Fig. S3). Our fundamental hypothesis was that MHWs generally had negative effects on ecological performance across studies, bioregions, events, response types and organisms. We also tested (see next section for method) if the magnitude of effects varied between heatwave events (eight MHW events), performance responses (6 types listed above) and impacted taxa (grouped into mammals, birds, fishes, mobile invertebrates, non-coral sessile invertebrates, corals, macroalgae, seagrasses and plankton, which included phytoplankton, zooplankton and open ocean microbes). For the MHW test, we hypothesized that the intensity of an event would correlate with the magnitude of effect size. For the biological response test, we hypothesized that coral bleaching and reproduction would be most affected by MHWs, the former because corals are known to be sensitive to elevated temperatures and the

latter because reproduction is typically more sensitive to stress than growth, abundance and survival. Finally, for the test across taxa we hypothesized that mobile organisms and seagrasses/corals would exhibit the largest effect sizes because mobile organisms can respond rapidly (e.g. local heat-stressed species can emigrate and warm-tolerant species from adjacent region can immigrate) and seagrasses/corals are generally sensitive to elevated temperatures.

Effect sizes, data pooling, dealing with outliers and autocorrelation and statistical tests

We analyzed impacts of MHWs on events, taxa and performance with Hedges g effect size, corrected for small sample sizes. Hedges' g was calculated as $(MHW_{After} - MHW_{Before})/S \times J$, where S is the pooled standard deviation and J is a factor that corrects for bias associated with small sample sizes^{26,58}. 'MHW_{before}' and 'MHW_{after}' represent the mean performance response reported by the study before and after the period of extreme warming, respectively. These relied on the authors' designations of the timing of the MHW. When the mean performance response before the MHW event were reported for multiple time points, an average was taken to obtain 'MHW_{before}'. In these cases, the associated variance of the time points was also pooled for use in S . In this analysis, negative and positive effects reflect inhibition and facilitation of organismal performance, respectively. Analyses were weighted by the sum of the inverse variance in each study and the variance pooled across studies and therefore give greater weight to those studies with higher replication and lower data dispersion. We used random-effect models, thereby assuming that summary statistics have both sampling error and a true random component of variation in effect sizes between studies^{26,58}. Most publications reported multiple auto-correlated effects, for example when a study reported effects of a MHW on many different coral species. Within-study effects are typically not statistically independent from each other and will conflate analyses, for example by artificially increasing degrees of freedom. We reduced within-study

autocorrelation by averaging 1049 non-independent Hedges g values (extracted from 116 identified research papers) to 182 values, each being characterized by a unique combination of a MHW, impacted taxa and performance response per research paper. Thus, prior to formal meta-analyses, within-study effects were averaged across multiple species and across nested designs (e.g., across different sites within a study or different depth levels). We acknowledge that our approach to aggregate auto-correlated within-study effect sizes, albeit being the most common way to do this⁵⁹, may be suboptimal, compared to advanced modelling techniques⁵⁹. However, many papers reported different types and nested layers of non-independent data within a single paper, requiring overly complex combinations and levels of aggregation models (compared to aggregating data with a mean), prior to the meta-analysis. Finally, we calculated mean effect sizes (E), 95% confidence intervals (CI), heterogeneity (Q), and the proportion of real observed dispersion (I^2) based on weighted random effect models in OpenMEE⁵⁸. Mean effect sizes were considered to be significantly different from zero or another effect if their 95% CI s did not overlap with zero or each other, respectively⁶⁰⁻⁶³. Effect sizes generated from a single study were excluded from plots (these were: a single mean effect size of -4.21 for the 1972 ENSO event, and a single effect size of 1.183 for ‘reptiles’ in the taxon-specific analysis).

Publication bias

Our meta-analyses may be influenced by publication bias if we overlooked studies documenting strong positive effects, or if studies finding non-significant effects are not published^{26,64,65}. We believe that the first type of publication bias is unlikely because we have worked intensively with MHW through primary research and by writing book chapters and reviews. We explored possible publication bias in different ways. We examined funnel plot asymmetry using the trimfill method and regression tests, and calculated the fail-safe number using the Rosenberg

method that estimates the number of studies averaging null results that should be added to reduce the significance level (p -value) of the average effect size (based on a fixed-effects model) to $\alpha = 0.05^{64,65}$. These tests suggest that publication bias has limited effects and that our results are generally robust. Although the funnel plot was highly asymmetric (Fig. S4), as shown by a significant regression test ($t = -3.598$, $p = 0.0004$), adjusting this possible bias using the trimfill method had no effects on our general conclusion, because the mean effect size remained significantly negative (-0.05 , with 95% confidence intervals -0.08 to -0.02 , $p < 0.01$). In addition, Rosenberg's fail safe number was 11,318, i.e., much larger than $5n + 10$, where n is the number of original studies included in our analyses. Thus, publication bias is unlikely to affect our results and did not change our main finding that MHWs generally had negative effects on marine organisms.

Effect of population location within the distributional range on responses to MHWs

We also tested the hypothesis that populations found towards the warm-water limit (i.e. equatorward range edge) of a species' distribution will respond more negatively to MHWs. To do this, we first extracted all observations from the database that were recorded at the species-level (302 species and 645 observations). Global species distributions were produced using presence-only Maxent models for each species for which sufficient observations were available, and using default parameters for a random seed, convergence threshold, maximum number of iterations, maximum background points and the regularization parameter⁵³ (using Maxent version 3.3.3k). Observations of species presence from iOBIS were gridded such that 1-degree grid cells with observations were set as present. These observations were then modelled as a function of the following environmental predictors: (1) average annual temperatures from the HadISST v1.1; (2) the logarithm of distance to the nearest coastline; (3) ocean depth from the

GEBCO marine atlas; and (4) FAO major fishing areas (<http://www.fao.org/fishery/area/search/en>). Global maps of predicted presence were produced using a threshold probability of 0.4. Presence maps were used to extract average annual SST values from Hadley Centre HadISST v1.1 1-degree dataset long-term climatology average 1960-2009. Quantiles (0, 0.1, 0.25, 0.5, 0.75, 0.9 and 1.0) of the population of temperatures in occupied grid squares were used to define the thermal niche of the species (weighted by the relative area of grid cells given by the cosine of the latitude). The frequency distribution of these species-specific distributions were then described using percentiles, and, for this analysis, the 10th and 90th percentiles were taken as measures of the warm and cold ends of the thermal range, respectively. Each location of a reported MHW effect was then used to extract the local average SST from the same SST climatology. Range location was then expressed as the local temperature less the 10th percentile of temperature, divided by the difference between the 10th and 90th percentiles of estimated species range temperatures. A range location value of zero or less was therefore at the cold end of the distribution range ($\leq 10^{\text{th}}$ percentile), while values of 1 or more would be at the warm end of the range ($\geq 90^{\text{th}}$ percentile). This process resulted in estimated range locations for 347 observations from 280 species within the ecological dataset.

The effect of range location on the size and direction of response to MHWs was assessed statistically using a linear model of Hedges' g versus range location weighted by the inverse variance of each Hedges' g value. Range location had a significant influence on responses, becoming more negative toward the warm edge of the species range (Fig. 2F; $F_{1,345} = 11.98$, $P < 0.001$). Differences among taxonomic groups followed the average range location within those groups. The average negative effect of MHWs on corals was associated with the average

reported effect location being at the 90th percentile of the coral species' temperature distribution. Those taxonomic groups reporting less negative effects were generally toward the middle of the distribution range, while those groups at the cold end of the species temperature range showed a positive effect (Fig 2F; $F_{1,7} = 10.33$, $P = 0.015$).

4. Analysis of habitat-forming species responses to MHWs

High-resolution time series on coral bleaching, seagrass density and kelp biomass were obtained from the Caribbean Sea, Western Australia and California, respectively (Fig. S5). Quality-controlled coral bleaching observations for the Caribbean Sea/Gulf of Mexico region (northernmost limit: 30.0°N, southernmost limit: 10.2°N, western limit: 97.5°W, eastern limit: 59.6°W) were obtained (at 11 km resolution) from NOAA's Coral Reef Watch program (<http://coralreefwatch.noaa.gov/satellite/index.php>). Observations were first filtered by month (July-October inclusive) and then summed for each year (1983-2010). Links between MHWs and seagrass density were examined with long-term monitoring data from Cockburn Sound, Western Australia, which is collected and managed by the Cockburn Sound Management Council (Western Australian Government). The density of seagrass shoots was examined at 2 long-term sites (Garden Island and Warnbro Sound), where high-resolution data have been collected using SCUBA at depths of 2-7 m since 2003 (all surveys were conducted in late Austral summer of each year). Data were averaged across transects and depths before generating an annual mean value for the Cockburn Sound region (average of 2 sites). Annual estimates for giant kelp, *Macrocystis pyrifera*, biomass were generated from the satellite-derived dataset produced by Cavanaugh et al.⁶⁶ as part of the Santa Barbara Coastal Long-term Ecological Research (SBC-LTER) program (<http://sbc.lternet.edu//index.html>). Estimates of the biomass of the kelp canopy (i.e. floating fronds) were derived from LANDSAT 5 Thematic Mapper satellite

imagery. Biomass data (wet weight, kg) were generated for individual 30 x 30 m pixels in the coastal areas adjacent to California and Baja California. Estimates of kelp canopy biomass were derived from the relationship between satellite surface reflectance and empirical measurements of kelp canopy biomass at long-term monitoring sites sampled using SCUBA. The extensive dataset was first filtered to remove uninformative values influenced by cloud cover and then by latitude (27.00-32.99°N) and time of year (only summer months, June-September inclusive). Average kelp biomass per year was then calculated from between 66,530 and 354,181 individual observations. The total number of MHW days observed for corresponding years and regions for each of the three separate datasets was then calculated, and correlations between MHWs and ecological response variables explored with Pearson's correlation coefficient.

Data availability: *Daily 0.25° resolution NOAA OISST V2 data are provided by the NOAA/OAR/ESRLPSD, Boulder, Colorado, USA, at <http://www.esrl.noaa.gov/psd/>. Data on human impacts and marine biodiversity are available from NCEAS (<https://www.nceas.ucsb.edu/globalmarine>) and Aquamaps (www.aquamaps.org), respectively. Coral bleaching records were extracted from the NOAA Reef Watch program (<https://coralreefwatch.noaa.gov>), giant kelp biomass data were sourced from the Santa Barbara Coastal Long-term Ecological Research (SBC-LTER) program (<http://sbc.lternet.edu/index.html>). Additional data are available from the corresponding author upon request.*

Additional references

- 51 García Molinos, J. *et al.* Climate velocity and the future global redistribution of marine biodiversity. *Nature Climate Change* **6**, 83, doi:10.1038/nclimate2769 (2016).

- 52 Kaschner, K. *et al.* AquaMaps: Predicted range maps for aquatic species. World wide web electronic publication, <<http://www.aquamaps.org/>> (2015).
- 53 Jones, M. C. & Cheung, W. W. L. Multi-model ensemble projections of climate change effects on global marine biodiversity. *ICES Journal of Marine Science* **72**, 741-752, doi:10.1093/icesjms/fsu172 (2015).
- 54 Halpern, B. S. *et al.* Spatial and temporal changes in cumulative human impacts on the world's ocean. *Nature Communications* **6**, 7615, doi:10.1038/ncomms8615
<https://www.nature.com/articles/ncomms8615#supplementary-information> (2015).
- 55 Halpern, B. S. *et al.* A global map of human impact on marine ecosystems. *Science* **319**, 948-952, doi:10.1126/science.1149345 (2008).
- 56 Deser, C., Alexander, M. A., Xie, S.-P. & Phillips, A. S. Sea Surface Temperature Variability: Patterns and Mechanisms. *Annual Review of Marine Science* **2**, 115-143, doi:10.1146/annurev-marine-120408-151453 (2009).
- 57 Ready, J. *et al.* Predicting the distributions of marine organisms at the global scale. *Ecological Modelling* **221**, 467-478, doi:<https://doi.org/10.1016/j.ecolmodel.2009.10.025> (2010).
- 58 Wallace, B. C. *et al.* OpenMEE: Intuitive, open-source software for meta-analysis in ecology and evolutionary biology. *Methods Ecol. Evol.* **8**, 941-947, doi:10.1111/2041-210X.12708 (2017).
- 59 Del Re, A. A practical tutorial on conducting meta-analysis in R. *The Quantitative Methods for Psychology* **11**, 37-50 (2015).
- 60 Kaplan, I., Halitschke, R., Kessler, A., Sardanelli, S. & Denno, R. F. Constitutive and induced defenses to herbivory in above-and-below ground plant tissues. *Ecology* **89**, 392-406, doi:10.1890/07-0471.1 (2008).
- 61 Gurevitch, J., Morrison, J. A. & Hedges, L. V. The interaction between competition and predation: A meta-analysis of field experiments. *Am. Nat.* **155**, 435-453, doi:10.1086/303337 (2000).
- 62 Gurevitch, J., Morrow, L. L., Wallace, A. & Walsh, J. S. A meta-analysis of competition in field experiments. *Am. Nat.* **140**, 539-572, doi:10.1086/285428 (1992).
- 63 Guo, L. B. & Gifford, R. M. Soil carbon stocks and land use change: a meta analysis. *Glob. Change Biol.* **8**, 345-360, doi:10.1046/j.1354-1013.2002.00486.x (2002).
- 64 Rosenberg, M. S. & Goodnight, C. The file-drawer problem revisited: a general weighted method for calculating fail-safe numbers in meta-analysis. *Evolution* **59**, 464-468, doi:10.1554/04-602 (2005).
- 65 Rosenberg, M. S., Adams, D. C. & Gurevitch, J. *Metawin: Statistical software for meta-analysis, Version 2.* Sinauer Associates, Massachusetts. (2000).
- 66 Cavanaugh, K. C., Siegel, D. A., Reed, D. C. & Bell, T. W. SBC LTER: Time series of kelp biomass in the canopy from Landsat 5, 1984 -2011. Santa Barbara Coastal LTER.
doi:10.6073/pasta/329658f19d5e61dda0be5ee883cd1c41. (2014).